



CHEVROLET

ASSEMBLY INSTRUCTIONS

3845300

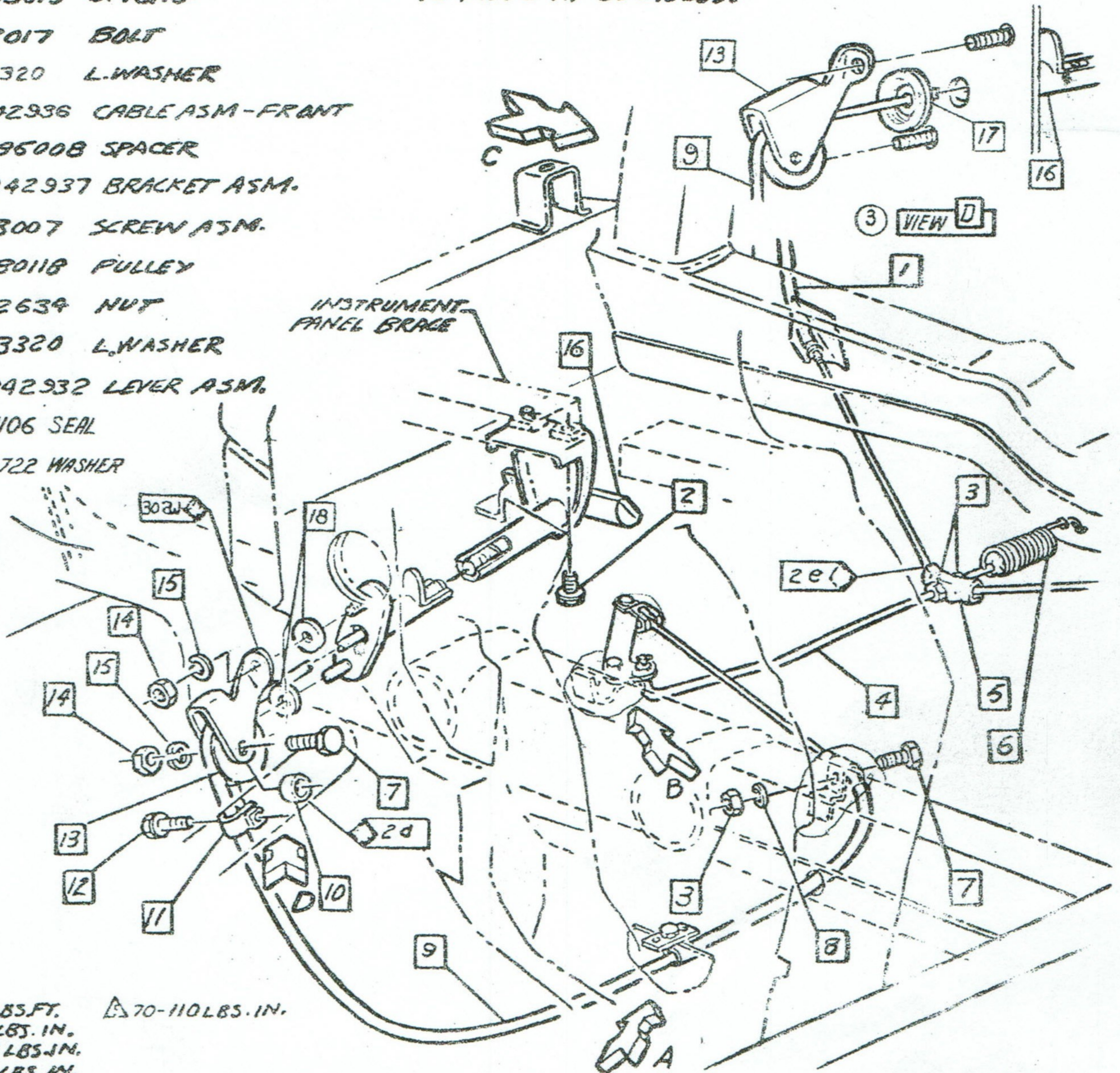
CORVETTE 19000 SERIES

ADJUSTMENT PROCEDURE

1. HANDLE IN THE RELEASED POSITION - CABLE TENSION MEASURED IMMEDIATELY IN FRONT OF **30** ON THE FRONT CABLE IS 7 ± 2 LBS. WITH CABLE TENSION HANDLE SHOULD START TO MOVE AT 15 ± 4 LBS.

2. HANDLE IN THE "ON" POSITION (HANDLE PULLED OUT 4 INCHES) CABLE TENSION MEASURED IMMEDIATELY IN FRONT OF **30** ON THE FRONT CABLE IS 40 ± 5 LBS. WITH THIS CABLE TENSION HANDLE WILL START TO MOVE AT 80 ± 10 LBS.

- 1** 3065427 CABLE ASMA - REAR
- 2** 3846202 SCREW ASM.
- 3** 120376 NUT
- 4** 3842943 BOLT
- 5** 6266437 EQUALIZER
- 6** 3849615 SPRING
- 7** 122017 BOLT
- 8** 103320 L.WASHER
- 9** 3842936 CABLE ASM - FRONT
- 10** 3785008 SPACER
- 11** 3842937 BRACKET ASM.
- 12** 453007 SCREW ASM.
- 13** 3780118 PULLEY
- 14** 102634 NUT
- 15** 103320 L.WASHER
- 16** 3842932 LEVER ASM.
- 17** 3781106 SEAL
- 18** 2394722 WASHER



- 14** - 20 LBS. FT.
- 15** - 75 LBS. IN.
- 16** - 107 LBS. IN.
- 17** - 50 LBS. IN.

CHEVROLET MOTOR DIVISION, GMC.		UPC	DATE	SYM	REVISION RECORD	AUTH.	CR.
PARKING BRAKE		5	2-23-64	1	WAS 187119 WASHER	54431	UT CI
19000		REF. C2.	4-23-65	2	ITEMS 17 & 18 ADDED	16115	KM
DWG PREL 5-8		C1		3	VIEW D ADDED		CI
DATE REL. 5-8		REF: Prel. C1.					
L-70369 L-75693		C1.					
L- L- L-		X SHEET					



3865300

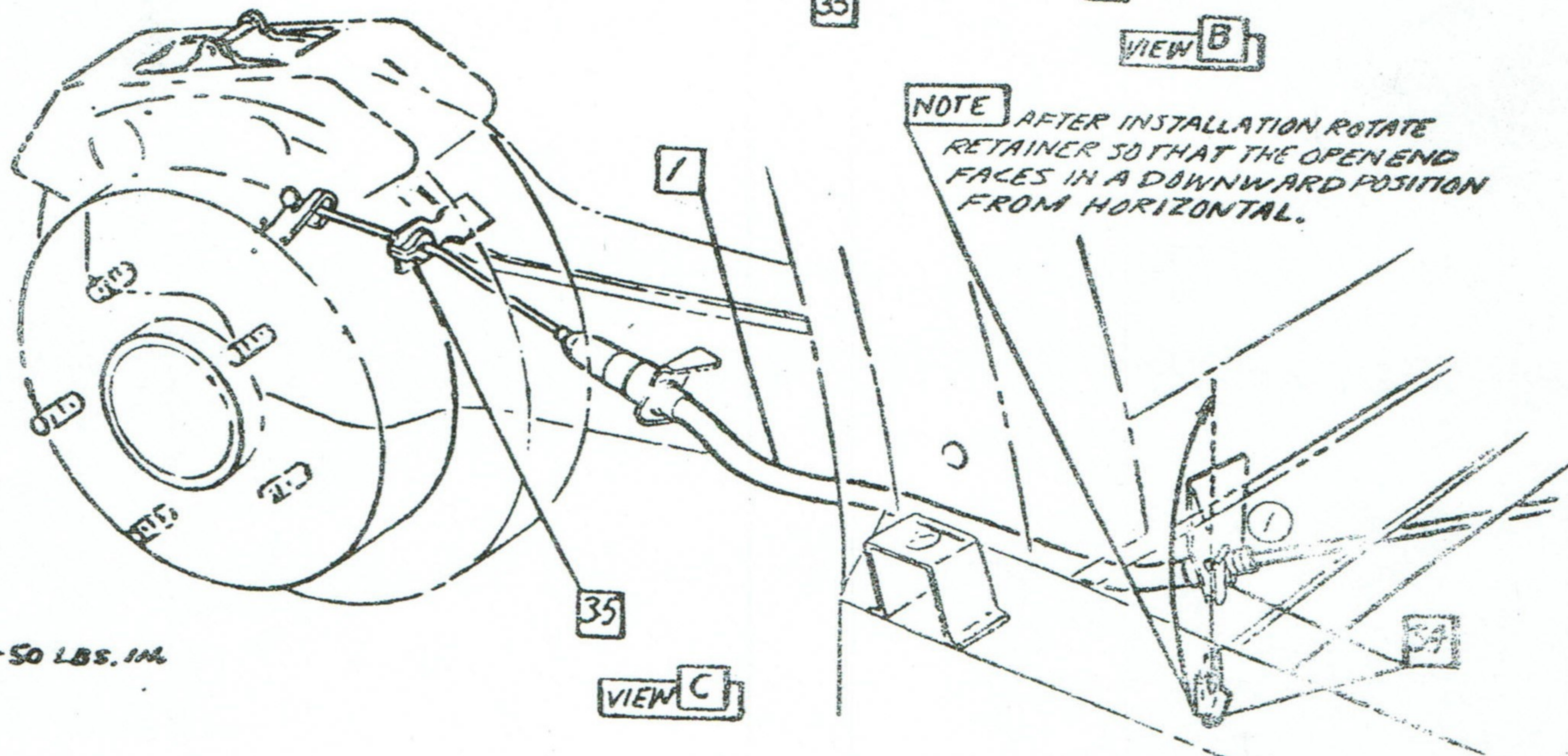
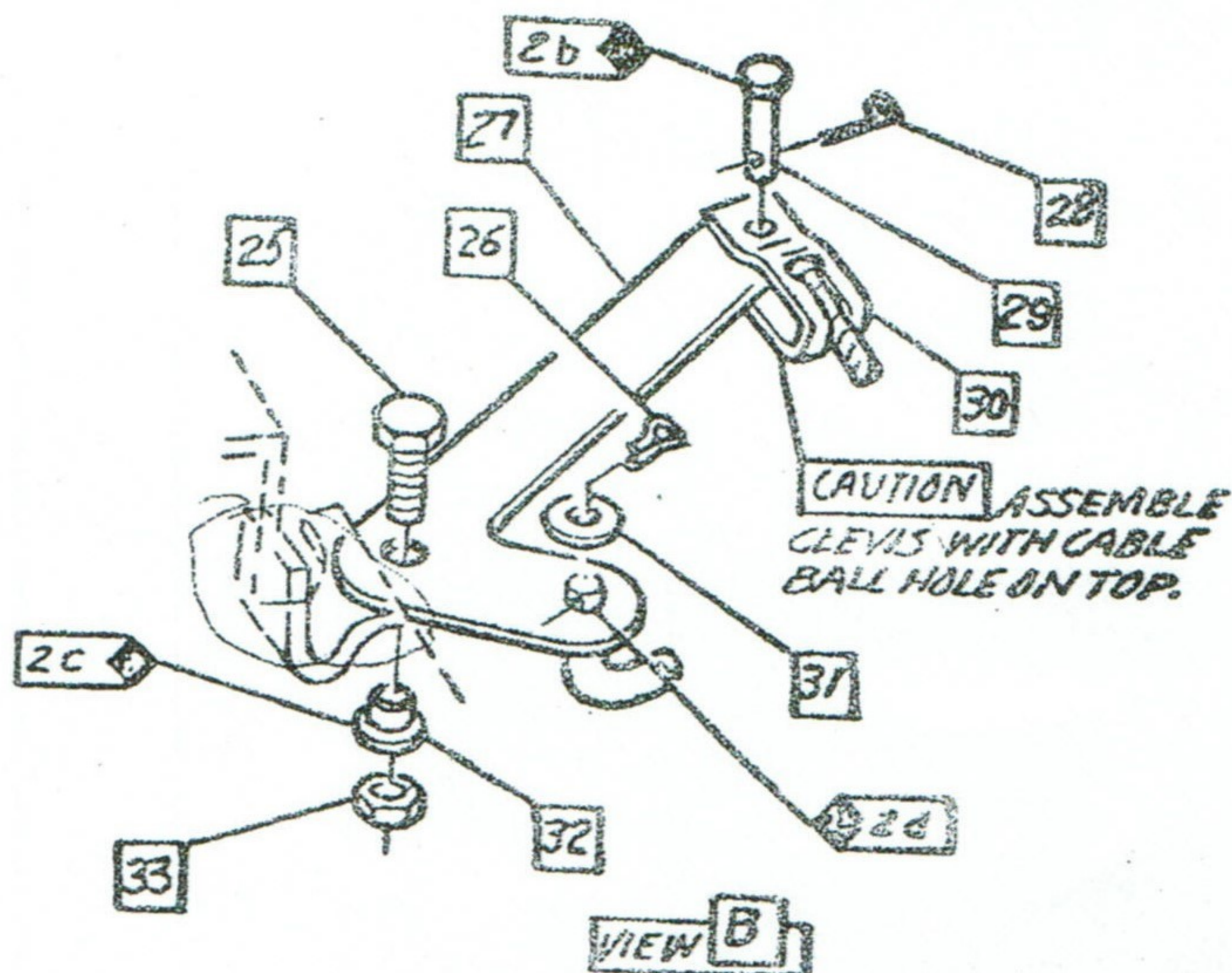
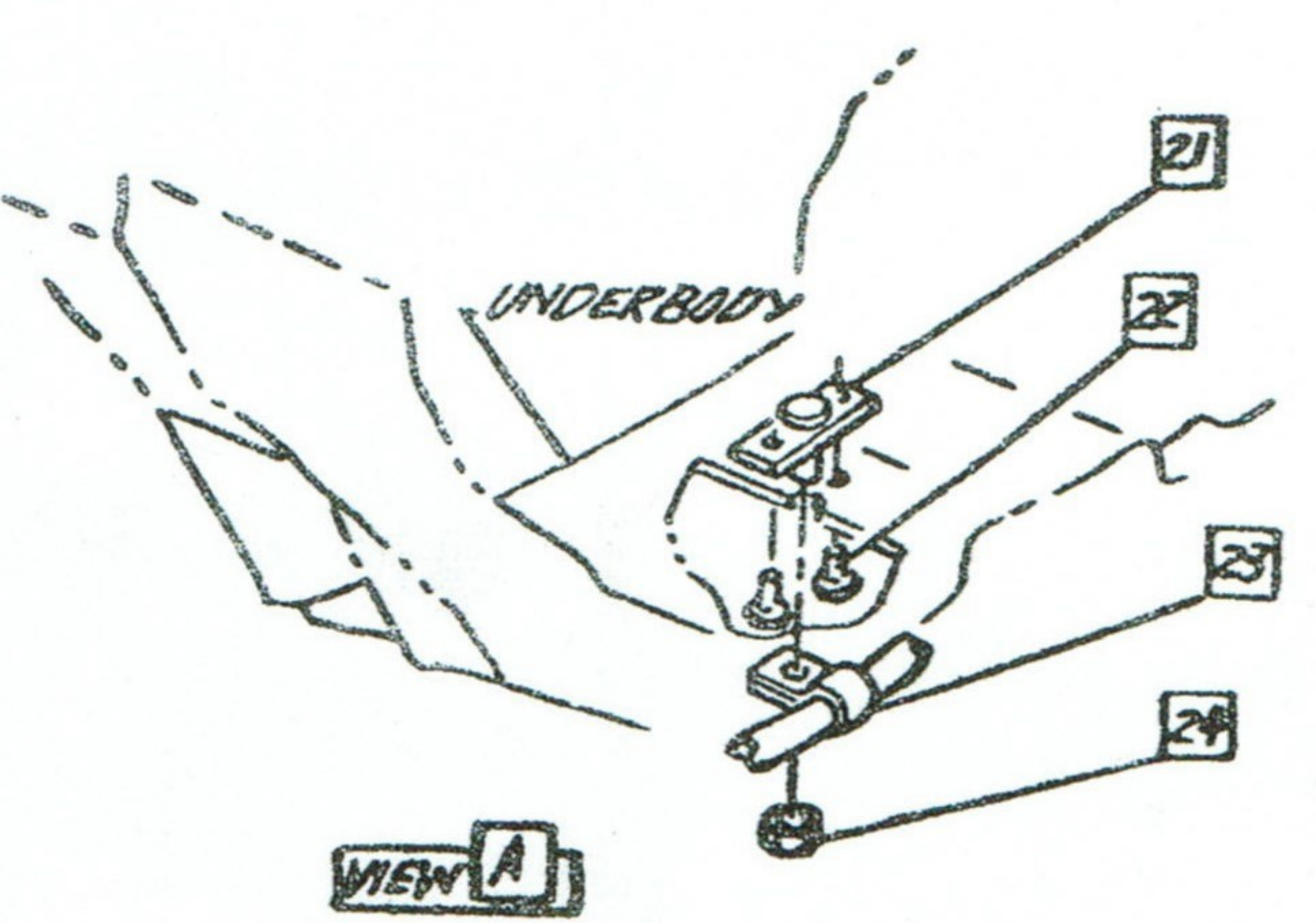
ASSEMBLY INSTRUCTIONS

3865300

CORVETTE 19000 SERIES

- 3797305 BRACKET ASM
- 465624 NUT
- 120524 CLIP
- 134551 NUT
- 180080 BOLT
- 3749084 CLIP
- 3842938 LEVER
- 103373 C.P.

- 9915017 PIN
- 3819098 CLEVIS
- 446548 WASHER
- 3842939 SPACER
- 273922 NUT
- 516213 RETAINER LH. & R.H.
- 3864278 GUIDE



98-50 LBS. IN.

CHEVROLET MOTOR DIVISION, GMC

UPC

DATE SYM

REVISION RECORD

PLT. PR. CR.

PARKING BRAKE

5

2-86 1 CLIP DWD. ADDED

6065 PR. CR.

19000

REF. CI.

C2.

DWG. 1X2 5-8 C/K REF: Prot. C2. L-70369 L-75693

SHEET 1

DATE REL. 5-8

L- L- L-

