

C2/C3 COILOVERS - Front

Tools Needed

- 9/16", 5/8", 11/16" & 3/4" Wrench & Socket
- Pry Bar or Long Screwdriver
- Rubber Mallet



Figure 1



Figure 2



Figure 3

1-800-418-5397 • 727-561-9199

vansteel@vansteel.com

facebook.com/vansteelcorvettes

instagram/vansteelcorvettes



- 3/8" Allen Head Socket/T-handle
- Torque Wrench
- **(oiled)=Anti-seize**

Once you have the old arms removed from the car you can start installing the tubular arms on your Corvette.

Installing Van Steel Tubular Lower A-Arms

First, start with the lower a-arms. The flat part of the shaft goes against the frame. There is a bolt that comes in the lower control arm cross shaft (**Figure 1**). This bolt goes toward the rear of the car. There is a top hat style reducing washer. Remove the bolt and washer from the arm and drop it through the frame bracket. The top hat part of the washer should face down. This washer is designed to reduce the gap of the OE hole to accommodate the 1/2" bolt supplied.

Moving toward the front side of the arm you can install the aluminum cradle bracket that is supplied with the (**Figure 2**) 7/16-20-1.5" Allen head bolts and lock washers. You are to re-use your existing 2 hole plate that came on the car. You will need a 3/8" Allen head socket/wrench/T-handle to tighten these down. (**Figure 3**) Do not torque these yet as you should move to the rear bolt again and torque it 1st. Torque the rear bolt to 60 ft/lbs. (oiled) and the front bolts to 40ft/lbs.

C2/C3 COILOVERS - Front

Installing Upper A-Arms

The ball joint is going to sit further back in the car than the OE upper a-arm. Shown in **Figure 4** is a left front upper. Align the holes in the cross shaft to the alignment studs in the frame. (We recommend using a rubber mallet as these bolts can be tweaked a little bit and you may need to hit a stud forward or backward.) If the studs are out and you are installing new studs, slide the a-arm into position and push the studs through the frame and through the cross shaft by hand until you get to the knurl of the stud. Place the 7/16" flat washers over the stud and thread the alignment nut onto the alignment stud and drive the studs into place so that they are seated. Once the studs are seated, tighten the alignment nuts. For starters, you can use a 1/16" shim on the front stud and a 1/16" + a 1/8" shim on the rear stud. Once you get the car aligned, the alignment shop will correctly place the correct size shims between the frame and the cross shaft. Refer to the Alignment Spec Sheet at the end of the instruction packet.



Figure 4



Figure 5

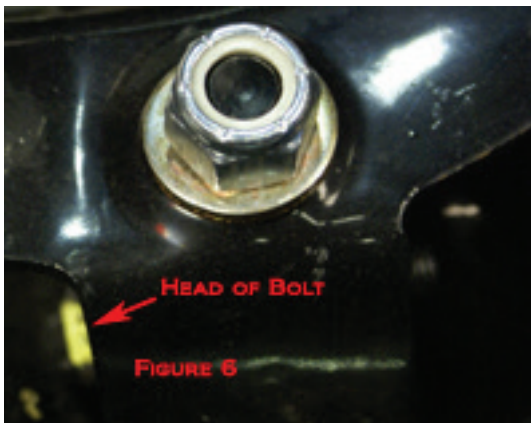


Figure 6

Installing Coilover Shocks

On top of the Coilover is a clevis mount. The mount will have 2 flat washers and a nyloc nut. Remove the nyloc nut and 1 washer. (**Figure 5**)

Next, slide the shock into place. You may need to grind the threaded section of the bolt that goes through the clevis.

C2/C3 COILOVERS - Front



Figure 7

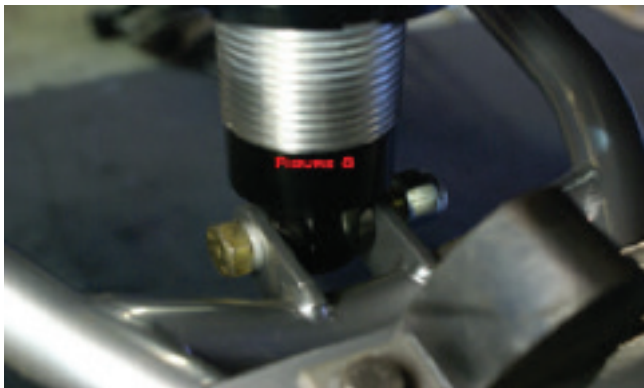


Figure 8



Figure 9

Once the shock is in place and the stud is through the OE shock hole, install the flat washer and nyloc nut that you removed before you started the install and tighten the so the stud engages the nyloc in the nut. Make sure the head of the bolt (Highlighted in yellow on **Figure 6**) is facing the front of the car. You will need a pry bar or screwdriver to hold the upper clevis from rotating as you tighten the nyloc nut (**Figure 7**). Torque to 50 ft/lbs.

On the lower a-arm, remove the 1/2" bolt and nut from the shock mount. Swing the lower a-arm into place so that you can install the lower part of the coilover shock into the lower shock mount of the a-arm. Once you get the shock hole lined up with the bracket for the lower mount, slide the 1/2" bolt through the hole and install the nut. We use a long bolt here because we like to get as much of the shank of the bolt through the shock as possible because it's stronger. Torque to 50 ft/lbs.

Installing Front Spindle Assembly

Install the lower ball joint on to the bearing assembly spindle and thread the nut on.

Next, place your floor jack under the lower a-arm with a block of wood. (Figure 9) Jack the arm up until you have clearance to insert the upper ball joint into the spindle. Once the stud of the upper ball joint is through the spindle, thread the nut on. *****PLEASE NOTE THE CAR MAY START TO LIFT OFF THE JACK STANDS/LIFT.** If this occurs, you can let the spanners down on the coilover shock with the spanner wrenches supplied to take tension off of the spring.

Once the front assembly is on you can refer to your assembly manual on how to install the rest of the steering parts (i.e., tie rod ends, center link etc).

C2/C3 COILOVERS - Front



Figure 10

Sway Bar End Link Orientation

New for 2020 is the addition of a sway bar to our front kits. The 1 1/8" bar uses rod ends for end links. **Figure 10** shows how the end link hardware should be oriented on the lower control arm.

To set up the heim end, you must first have the car at ride height (ramps or drive on lift). Next choose your sway bar stiffness (two hole adjustable), the closest to the end of the bar will be the softer of the two settings. You'll want to setup the end link to be as close to perpendicular to the ground as you can. Once both end links are installed, you should be able to rotate the heim with minimal to no binding (by hand or with a wrench). Enjoy the upgraded handling of you Corvette!

Street Specs

FRONT

Rake .500" Positive
Toe .063° Total Toe In
Camber 0°

Caster w/VS Tubular Uppers 6-8° Positive

REAR

Toe .265° Total Toe In
Camber .25° Negative

Track Specs

FRONT

Rake .200" Positive
Toe 0 - .132° Total Toe Out
Camber .75 - 2° Negative

Caster w/VS Tubular Uppers 6.3-7.5° Positive

REAR

Toe .265°-.657° Total Toe In
Camber .5 - 1° Negative

Advanced Street Specs

FRONT

Rake .500" Positive
Toe 0° - Total
Camber .25 - .5° Negative

Caster w/VS Tubular Uppers 6-8° Positive

REAR

Toe .265° Total Toe In
Camber .25-.50° Negative

**All measurements
based on a stock tire,
overall height of 27"**

1-800-418-5397 • 727-561-9199

vansteel@vansteel.com

facebook.com/vansteelcorvettes

instagram/vansteelcorvettes