

C2 C3 C4 C5 C6 C7



VAN STEEL

2020

CORVETTE
SUSPENSION
BRAKES &
STEERING PARTS

800.418.5397
vansteel.com



Street • NCRS • Track

Your Corvette Suspension Specialists



Since the mid 1970's Van Steel, the name, the company has grown to become the standard by which customers purchase and companies gauge their performance. The brand Van Steel originated from a small Connecticut based company over 40 years ago. Art Dorsett's passion and mechanical creativeness continues with his son Dan Dorsett, a second generation "Car Nut". Originally rebuilding rear wheel bearings Van Steel now offers thousands of new and rebuilt parts. Their focus still remains in suspension, steering and brakes.

Experience, for over 40 years Dan and his team continue to **listen** to their customers, **look** for ways to improve, ask **why** things fail and **find** solutions to make parts better. With each of these **Experiences**, Van Steel has gained valuable **Knowledge** needed to provide the highest quality of customer technical support in the industry.

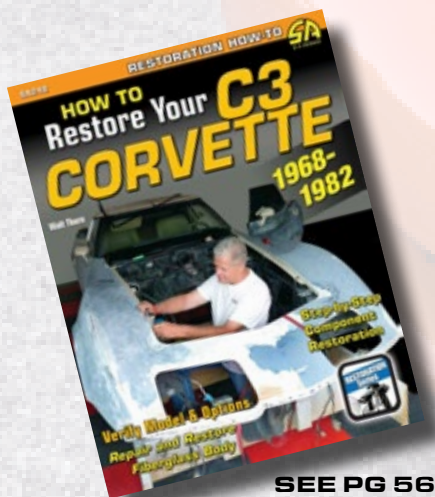
Passion is the fuel that drives the Van Steel team for perfection in their builds and inspires the adaptation of the new technology to the older generations. For 40+ years Van Steel's technical partners continue to grow. The engineering and technical expertise comes from some of the best in the industry, as we are proud of these resources, since we all share a similar automotive **Passion**.

THANK YOU.

AC Delco	Hard Bar
Bendix	Hawk
Borgeson	Hyperco
CSSB	JRi
Carolina	QA1
Sway Bar	SKF
Manufacturing	Timken
Gun Drilling	Wilwood

MOST IMPORTANT

**Thank you to all the
THE VAN STEEL CUSTOMERS.**



SEE PG 56



#vansteelcorvettes

VAN STEEL
CORVETTE SUSPENSION SPECIALISTS

ORDERING

Due to the high cost of handling, we require a \$25.00 minimum order. Be sure to specify year of car, front or rear, left or right and any other pertinent information to allow us to properly fill your order.

PRICING

All prices are subject to change without notice.

All items will be shipped at current prices unless discussed prior to shipping. Customers are encouraged to call or check web site for the latest prices.

Prices with "ND" are not eligible for discounts. Van Steel offers Military, Forum Member, NCCC, NCRC and other approved clubs a discount. Discounts are based off of the Van Steel published MSRP prices. Dealer and Warehouse Distributor pricing is only available to qualified automotive service and/or retailers.

PAYMENT

American Express, Discover, Master Card and Visa credit cards are accepted forms of payment. Van Steel does not ship orders COD. Personal Checks may be accepted on Pre-Paid sales.

RETURNS AND EXCHANGES

Advanced notice for returned merchandise must be given and approved prior to returning to Van Steel. All returned merchandise must be accompanied with a copy of the invoice. Exchanges are eligible in the first 30 days and must be unused. Approved returns are subject to a 20% restocking fee. All return credits are applied to future purchases. Racing and/or specialty components are not eligible for return. All shipping costs for returns are the responsibility of the customer.

CORE REFUNDS

Our core refund policy changed as of 2013. Because both the quality and quantity of used rebuild-able parts (cores) is diminishing, Van Steel is requesting a faster/quicker return policy, with the hope to provide you the customer with a quality, reasonably priced component in a timely manner. All cores must be returned to Van Steel within 30 days of the invoice date to be eligible for full refund. Beyond 30 days, a 50% late fee may be assessed unless noted otherwise. The core refund is based upon the rebuild-ability of the core. Dimensional exactness and surface smoothness are part of the refund criteria.

WARRANTY

Warranty of parts and services purchased from Van Steel is limited to the replacement of the defective part only. Van Steel DOES NOT cover the replacement labor, shipping, and/or subsequent damage, injury or related expenses caused by the component. Van Steel components are made of high quality and craftsmanship to reduce failure. Van Steel warrants the fit, finish and makes every effort to insure the best valued components.

For specific component warranty please see page 61

SUSPENSION

- Complete Kits	4-11
- Coilover Kits	8
- Shocks	12
- Rebuild Kits	14
- Composite Springs	16
- Front	18
- Bushings (delrin/poly)	20
- Braces	20
- Rear	32
- Bearing Assembly	24, 28
- Strut Rod	26
- Trailing Arm	28
- Sway Bars	37
- Half Shaft	34

STEERING

- Complete Kits	21
- 62-83 Parts	22
- Boxes	23

BRAKES

- Disk Conversion Kits	31
- Front Brakes	45
- Rear Brakes	48
- Drum Brakes	50
- Parking Brakes	47
- Wilwood	40
- Hawk Pads	42
- Brake Lines	43
- Caliper & Rotor Kits	44

REBUILDING SERVICES

- Control Arms	13
- Bearings & Trailing Arms	24, 28
- Differentials & Half Shafts	34

OTHER

- Fuel Lines	43
- Tools	56
- Torque Specs	51
- Alignment Specs	52-55
- Trouble Shooting	3
- Exchange/Core Program	58
- Warranty	58
- Calendar of Events	61



800.418.5397

www.VANSTEEL.com

PLAN YOUR BUILD

Our goal at Van Steel is a happy and satisfied customer. With 90 plus years of experience in authenticity, ride quality, handling and durability, we understand. Van Steel recommends to accomplish your dreams, take a moment and complete our "Plan Your Build". This plan helps to eliminate double expenditures, more accurately matching the application of modern technology both the older and newer cars, reduce the possibility of under or over building the project car and understand cause and effect of the up-grades.

1. THE BUILD

a. NCRS

- i. Show /Judged _____
- ii. Survivor _____

b. Driver

- i. Standard Street _____
- ii. Spirited Street _____
- iii. Street/Track
 - 1. Street/Drag _____
 - 2. Street/Autocross _____
 - 3. Street /Long Track _____
- iv. Track
 - 1. Experience _____
 - 2. Goal for Level of Accomplishment
 - a. Star _____
 - b. Co-Star _____
 - c. Supporting Cast _____
 - 3. Sanctioning Body _____
 - 4. Class _____
 - 5. Safety Requirements _____
 - 6. Weight _____

2. BUDGET

- a. Establish a Realistic Budget
 - i. High and Low _____

3. ENGINE

- a. Size and Type
 - i. Power Adder (weight) _____
 - ii. Additional Cooling _____
- b. Rear Wheel Horsepower _____
- c. Transmission
 - i. Manual, Type _____
 - ii. Automatic _____
 - 1. Trans Brake _____

4. TIRE/WHEEL

a. Make/Brand

- i. Size Front and Rear _____
- ii. Model _____

5. CHASSIS/SUSPENSION

a. Configuration

- i. Stock _____
- ii. Retro Mod _____

b. Steering

- i. Stock _____
- ii. Retro Mod _____

c. Springs

- i. OEM Design
 - 1. Spring Rate _____
- ii. Retro Mod
 - 1. Dimensions _____
 - 2. Type _____
 - 3. Spring Rate _____

d. Brakes

- i. Stock _____
- ii. Retro Mod _____
- iii. Track _____

e. Sway Bars

- i. Size
 - 1. Front _____
 - 2. Rear _____

NOTES: _____



TROUBLESHOOTING TIPS

Here are a couple of troubleshooting tips to help you figure out what is causing some problems that you may be having.

Differential Clunks When Turning:

- Change Differential Fluid & Additive. If problem persists, clutches need to be replaced.

Rear End Clunks When Putting Into Gear:

- Check U-Joints, Pinion Bushing, Pinion Bracket on frame, Tranny Mounts.

Rear End Will Not Hold Alignment:

- Check T-Arm Bushings, Strut Rods Bushings (Rods Need to be Straight), Excessive Side Yoke play, Diff cross member bushings.

Front End Will Not Hold Alignment:

- Check side play in Ball Joints, Worn Inner & Outer Tie Rod Ends, Worn Idler Arm, Upper & Lower A-Arm Bushings, Steering Box.

Noisy Power Steering:

- Check Power Steering Fluid Level & Pump. Check for Leaks. Rack & Pinion Cars – Check Rack & Pinion.

Steering Pulls/Loose Steering:

- Check for leaks. Check the caliper rubber hoses and all power steering parts for leaks.

Excessive Body Roll:

- Check sway bar(s). Bushings may be worn. Be sure to match front and rear bars or add a rear bar if you don't have one.

Car Sags:

- Check Springs, Body Mounts, Improperly Installed/Adjusted Springs, Air Pressure.

Bouncy Ride:

- Check Shocks, Air Pressure.

Brakes Stick:

- Restrictive fluid movement through rubber flex hoses, Pinched Hoses, Sticking Caliper Piston, Sticking Caliper Guide Pins, Sticking Pedal Pivot, Mis-Matched Master Cylinder Piston, Pedal Ratio.

Brake Pulls:

- Check Air Pressure, Radial Pull, Restriction in Hydraulic System, Check Calipers, Brake Hoses, Pad Contamination, Loose Wheel Bearing, Check Pad Wear.

Soft Pedal:

- Air In brake system, Check Rotor Run Out, Excessive Bearing play (Front& Rear), Worn Hoses, Master Cylinder Leaking Internally.

Hard Pedal:

- Check Power Booster, Bad Rubber Flex Hoses, Incorrect Master Cylinder.

Brake Squeal:

- Glazed Pads, Wrong Compound, Worn Anti Rattle Clips and or Guide Pins, Brake Pad Wear Indicators.

COMPLETE CHASSIS REBUILD

Starting at \$6299.99*

Van Steel will completely disassemble your frame (no body, engine, transmission, or gas tank) and rebuild every suspension component front to rear. You can choose from many different options. We baseline a standard rebuild and will modify your order to accommodate what YOU want to help achieve your goal. Below are some of the parts we rebuild or replace.

Additional Parts To Consider

Borgeson Steering Box	\$950.99
Brake Line & Fuel Line Kits	Page 41
Wilwood Big Brake Kits (17-18" wheels)....	Page XX
Additional Powdercoat Colors.....	\$200.00
Forgeline Wheels	CALL



- Front A-Arms
- Steering Box
- Front Bearing Assemblies
- Tie Rod Ends & Sleeves
- New Idler Arm
- Power Steering
(Valve, Cylinder & Hoses)

- Sway Bar Bushings
- Car Set of Shocks
- Car Set of Calipers
w/Lines & Hoses
- Trailing Arms
- Rear Spring
- Half Shafts

- Drive Shaft
- Strut Rods
- Differential
- Differential Cross Member
- Pinion Bushing
- Bump Stops

CCR-01D - Complete Chassis Rebuild - Drum Brake Car.....	\$6299.99
CCR-01 - Complete Chassis Rebuild - Disk Brake Car.....	\$6899.99
CCR-01-CO - Complete Chassis Rebuild, Front & Rear Coilovers, Wilwood.....	\$10599.99
CCR-02-COHD - Complete Chassis Rebuild, Front & Rear Coilovers, 30-spline, Wilwood.....	\$14999.99





SUSPENSION KITS

with composite springs

1963-82

EZ Ride Suspension System

This "EZ Ride" suspension system is engineered to provide the smoothest and softest riding Corvette with original type suspension to date. Ideal for cruising, with specially valved QA1 shocks and soft rated springs. Together they eliminate the unpleasant harshness normally found in the sport minded suspension. Matched sway bars retain good handling while focusing on ride quality.

- 460lb. Front Coil Springs
- Rear "EZ Ride" Hyperco Composite Spring Kit
- Front 1" Steel Anti-Sway Bar Kit
- Rear 5/8" Steel Anti-Sway Bar Kit
- Car Set QA1 "Ride Quality" Composite Spring Shocks

VS-42003 (63-77).....\$1369.99

VS-42003A (78-79).....\$1369.99

VS-42003B (80-82).....\$1369.99



**Exclusively
Selected
System**



1963-82

Street & Slalom Suspension System

Designed for Spirited Street driving, this package is a step above the famous F41 option. Van Steel addresses the springs with an increased front spring rate, with a slightly lower front stance combined with a matched low arch & higher rated rear composite spring. QA1 Sport Valved shock absorbers control the suspension providing a firm, not harsh, ride. The matched sway bars control chassis roll in the corners. In the rear we include Smart Struts which reduces the camber changes. The results maximize the tires forward grip and lateral support. Once installed, you will instantly feel the change.

- Front 550 lb. Coil Spring Kit
- Rear Composite Low Arch 360 lb. Spring Kit
- Smart Strut Assembly
- QA1 Sport Shocks
- Matched Sway Bar Kit, F 1 1/8" R .3/4"

VS-42002 (63-77).....\$1499.99

VS-42002A (78-79).....\$1499.99

VS-42002B (80-82).....\$1499.99



1963-82

Advanced Street & Slalom Kit

To describe the Advanced Street and Slalom System in one word is adjustability. This system replaces the fixed bucket coil spring with an adjustable front "semi-coil over" spring. This unit is adjustable in ride height and the QA1 shock provides compression and rebound adjustability. Van Steel up sizes the front sway bar for improved front response in the corners. In the rear we increase the composite spring rate while maintaining ride height. Added to this system are matching rear single adjustable QA1 shock absorbers, a rear sway bar and adjustable HD Smart Struts. Additional spring rates are available. This is truly an adjustable, Advanced Street and Slalom System for the 63-82 Corvette.

- Front 550 lb. Front Semi Coil Spring Kit
- Rear Composite Low Arch 360 lb. Spring Kit
- Smart Strut Assembly
- QA1 Single Adjustable Shocks
- Matched Sway Bar Kit, F 1 1/8" R 3/4"

VSD-01 (63-77).....	\$1924.99
VSD-01A (78-79)	\$1924.99
VSD-01B (80-82)	\$1924.99

1985-96

Sport Suspension System



This system is designed for the "Spirited Street" driver, firm and responsive without harshness. Our composite springs are matched with QA-1 Sport valved shocks which returns the C4 to Corvette Challenge sharpness. Included in this are polyurethane bushings, Smart Struts and an up sized 32mm front anti-sway bar.

- Sharper Handling
- Lower Stance
- Precise Fit

**COMING
SOON**

VS-42840 (85-87).....	CALL
VS-42842 (88-96).....	CALL

1984-96

Lowering Kit

VS-32309.....	\$40.99
---------------	---------

Polyurethane Wedges provide the ability to lower the front of the C4 by raising the spring in the spring cradle. Special 8 inch rear spring bolts increase the amount of adjustment allowing for a lower rear ride height.





COILOVERS

63-19

1963-82

Front Coil Over System

Van Steel designed; the Front Coil Over System is the ultimate in 63-82 front suspension upgrades. A true BOLT-IN System, this package provides adjustable ride height, adjustable QA1 shocks, Moog ball joints and lower bump stops. The light weight, strong control arms are constructed with 4130 Chromoly tubing, tig welded, jig fit and finished in a gloss black powder coat finish. 6 degrees of positive caster is built into the upper control arms which improves handling with better initial turn-in and improved high speed stability. A vast selection of Hyperco springs can be tailored to your exact needs. Delrin PTFE bushings and special cross shafts are included in the package. Our base systems are listed, please call for special applications.

- Light Weight
- True Bolt-In
- Fully Adjustable
- Improved Handling
- Includes sway bar
- Made in the USA

Prt No.	Motor	Shocks	Price
CO-C3-FS1	Small Block	Single Adjustable	\$2699.99
CO-C3-FS2	Big Block	Single Adjustable	\$2699.99
CO-C3-FD1	Small Block	Double Adjustable	\$2899.99
CO-C3-FD2	Big Block	Double Adjustable	\$2899.99
AR-09JRI-F	SB/BB	JRI-Double Adjustable	\$3699.99



Exclusive
Van Steel Design

1963-82

Rear Coilover Systems

Get more control out of your suspension and enjoy those corners even more by eliminating the leaf springs.

- Offset Trailing Arms - Powder Coated Black
- Optional Johnny Joint Available
- QA1 Single or Double Adjustable Shocks
- Hyperco Coil Springs
- 2 Upper Reinforcement Brackets
- Eliminates Rear Leaf Spring
- Spanner Wrenches

Prt No.	Motor	Shocks	With	Price
CO-C3-RS1	Small Block	Single Adjustable	-	\$1459.99
CO-C3-RS1C	Small Block	Single Adjustable	-	\$2689.99
CO-C3-RD1	Small Block	Double Adjustable	-	\$1699.99
CO-C3-RD1C	Small Block	Double Adjustable	w/NewBearing Assemblies	\$2879.99
CO-C3-RD4	Small Block	Double Adjustable	w/Johnny Joints	\$1849.99
CO-C3-RS4	Small Block	Single Adjustable	w/Johnny Joints	\$1545.99
CO-C3-RS2	Big Block	Single Adjustable	-	\$1399.99
CO-C3-RS2C	Big Block	Single Adjustable	-	\$2609.99
CO-C3-RD2	Big Block	Double Adjustable	-	\$1699.99
CO-C3-RD2C	Big Block	Double Adjustable	w/NewBearing Assemblies	\$2879.99
CO-C3-RD5	Big Block	Double Adjustable	w/Johnny Joints	\$1849.99
CO-C3-RS5	Big Block	Single Adjustable	w/Johnny Joints	\$1545.99
CO-R-78JRI-R	SB/BB	JRI-Double Adjustable	w/Johnny Joints	\$2699.99



Exclusive
Van Steel Design

Shown with optional
spherical bearings

1965-82 Front Semi-Coilovers

Prt No.	Motor	Shocks	Price
FSC-01-400	Small Block	Single Adjustable	\$699.99
FSC-01D-400	Small Block	Double Adjustable	\$949.99
FSC-02-450	Small Block	Single Adjustable	\$699.99
FSC-02D-450	Small Block	Double Adjustable	\$949.99
FSC-03-550	Big Block	Single Adjustable	\$699.99
FSC-03D-550	Big Block	Double Adjustable	\$949.99



FSC-01-400

Exclusive Van Steel Design



1988-96

Coilover Systems

When you demand more control from your suspension, a coilover kit is the only way to go. Get single or double adjustable shocks, with a multitude of spring rates available depending on how and where you drive your car.

- QA1 Single or Double Adjustable Shocks
- Each Knob has 18 Adjustment Points
- Hyperco Coil Springs
- 2 Pin Mount Brackets
- 2 Rear Lower Mounts
- 1 Set of Spanner Wrenches

Prt No.	Spring	Shocks	Price
CO-C4-SA1	Street	Single Adjustable - Car Set	\$1949.99
CO-C4-SA2	Aggressive	Single Adjustable - Car Set	\$1949.99
CO-C4-DA1	Street	Double Adjustable - Car Set	\$2449.99
CO-C4-DA2	Aggressive	Double Adjustable - Car Set	\$2449.99
CO-C4-DA3	Race	Double Adjustable - Reduced Travel - Car Set	\$2449.99

1997-13

Coilover Systems

Spring options allow you to select a softer ride for cruising or to a more firm, entry level track usage spring rates. Our coilover system is fitted with QA1 Double Adjustable shocks which allow you to adjust Rebound and Compression separate from one another.

- Personalization in Ride and Handling Options
- Adjustable Ride Height
- Independent Suspension Tuning
- Adjustable Shock Settings

Prt No.	Location	Shocks	LBS	Price
CO-GD402-09650	Front	Double Adjustable	650	\$1199.99
CO-GD403-07550	Rear	Double Adjustable	550	\$1199.99
CO-C5/6-DA-450	System	Double Adjustable	450	\$2199.99
CO-C5/6-DA-550	System	Double Adjustable	550	\$2199.99
CO-C5/6-DA-650	System	Double Adjustable	650	\$2199.99

1997-2019

JRi Coilover Systems



The next step for Corvette suspension tuning for aggressive street, autocross, or full track setups. **RAFT** valving for better handling and ride quality. Assortment of spring rates for tire types and car usage.

- Fixed Low Speed Rebound Front
- Fixed Low Speed Comp. Rear
- Adjust High Speed Rebound front/rear
- Adjust Low Speed Comp.Front
- Adjust Low Speed Rebound Rear

Prt No.	Location	Shocks	LBS	Price
JRi-RAFT-CODA	System	Double Adjustable	600/500	\$3849.99
JRi-RAFT-C7DA	System	Double Adjustable	600/500	\$3899.99





TRACK DAY

97-14



Track Day Suspension Options

These C5/6 Corvette track kits presented by Van Steel are a culmination of years of testing, prototyping and racing. These kits are an extension of composite spring implementation and the integration of advanced dampeners, aero space bushings and leading edge bearings. Our "Test" driving team is lead by "RAFT" Danny Popp and VetteSport's Dr. Jerry Onks who put in countless laps a year on our products. Van Steel engineering and manufacturing partners are, Carolina Sway Bar, Hard Bar, Hyperco, JRI and SKF. These kits are current, winning kits that are constantly evolving. We are certain these kits deliver handling, durability and quality results Van Steel is known for.

Grand Touring Kit

- 32mm Front Adjustable Sway Bar Kit w/heim endlinks
- 25mm Rear Adjustable Sway Bar Kit w/heim endlinks
- Premium JRI Front & Rear Shocks
- Delrin Upper Shock Mount Bushing Kit

VS-97498: 1997-2013 - Non-Adjustable.....**\$2299.99**

VS-97499: 1997-2013 - Double Adjustable**\$4299.99**

Spirited Street/Entry Level Track Kits

- 35mm Front Adjustable Sway Bar Kit
- 25mm Rear Adjustable Sway Bar Kit
- Hyperco T1 +10% Front Adjustable Custom Composite Spring
- Hyperco T1 +10% Rear Adjustable Custom Composite Spring
- Premium JRI Front & Rear Double Adjustable Shocks
- Delrin Upper Shock Mount Bushing Kit

VS-97500: 97-04**\$6199.99**

VS-97500A: 05-13**\$6199.99**



C5 Rear Toe Mount Kit

- 3 Way Adjustable Inner Mount
- Adjust for Rear Bump Steer on Lowered C5s
- Allow for Better Clearance with Rear Coilovers

C5-TMK: 1997-2004**\$369.99**

C5-TMIK: Inner Mount Only**\$249.99**

When it's time to replace those hubs, it could be the time to go all in on your track car. These kits include everything we make at Van Steel for the late model Corvette. SKF racing hubs, adjustable sway bars w/heim endlinks, delrin bushings, JRi shocks, Van Steel coilover hardware, Hyperco coil springs, AMT camber kit.

Track Attack Kits

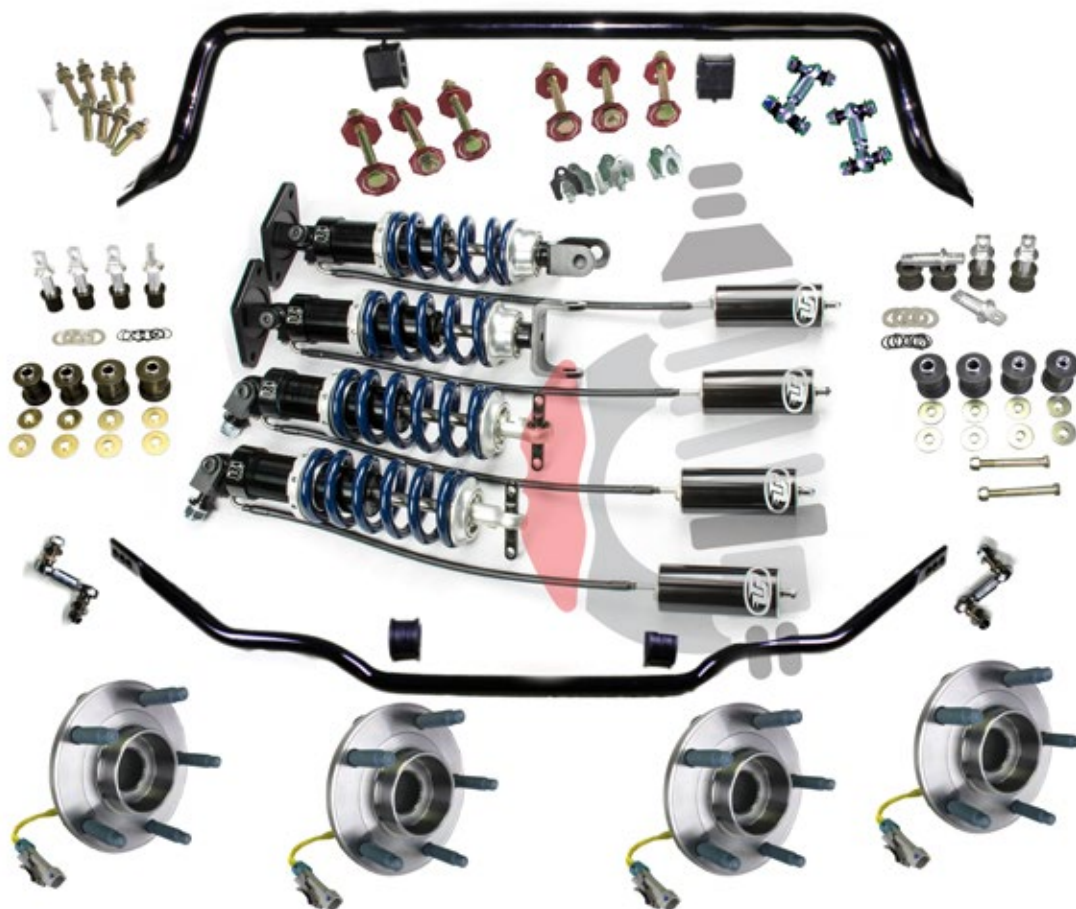
- 35mm Front Adjustable Sway Bar Kit
- 25mm Rear Adjustable Sway Bar Kit
- JRi Double Adjustable Coilovers
- Van Steel/HB Advanced Delrin Bushing Kit
- SKF X Tracker Advanced Hub Bearings (excluding VS-97503)
- Van Steel Delrin Bushing Kit
- AMT Camber Kit



VS-97501: 1997-2008 - Steel Frame\$8999.99

VS-97502: 2006-2008 - Aluminium Frame (ZO6/ZR1) . \$8499.99

VS-97503: 2010-2013 - Aluminium Frame (ZO6/ZR1) . \$8499.99



C7 Options coming in 2020. Call for more info.



SHOCKS

1963-2013



Non-Adjustable

Double Adjustable

Single Adjustable

63-82 Delco & KYB Shocks

Prt No.	Year	Description	Price
FS-14	63-82	KYB, Front GR2	ea. \$44.99
FS-18-DEL	63-82	Delco Front OE Shock	ea. \$44.99
SR-18	63-82	KYB, Rear GR2	ea. \$44.99
SR-18-DEL	63-82	Delco Rear OE Shock	ea. \$44.99

63-13 QA1 Non-Adjustable Shocks

Prt No.	Year	Description	Price
QSP-6382-NA	63-82	Non Adjustable Shocks - Car Set	\$559.99
QSP-6382-SP	84-87	Non Adjustable Shocks - Sport Valved - Car Set	\$589.99
QSP-8487-NA	84-87	Non Adjustable Shocks - Car Set	\$559.99
QSP-8896-NA	88-96	Non Adjustable Shocks - Car Set	\$589.99
QSP-9713-NA	97-13	Non Adjustable Shocks - Car Set	\$589.99

QA1 Single Adjustable Shocks

Prt No.	Year	Description	Price
QSP-6382-S	63-82	Single Adjustable Shocks - Car Set	\$619.99
QSP-8487-S	84-87	Single Adjustable Shocks - Car Set	\$619.99
QSP-8896-S	88-96	Single Adjustable Shocks - Car Set	\$619.99
QSP-9713-S	63-82	Single Adjustable Shocks - Car Set	\$619.99
QSP-8487-S	97-13	Single Adjustable Shocks - Car Set	\$619.99

QA1 Double Adjustable Shocks

Prt No.	Year	Description	Price
QSP-6382-D	63-82	Double Adjustable Shocks - Car Set	\$949.99
QSP-8487-D	84-87	Double Adjustable Shocks - Car Set	\$949.99
QSP-8896-D	88-96	Double Adjustable Shocks - Car Set	\$949.99
QSP-9713-D	97-13	QA1 Double Adjustable Shocks - Car Set	\$1069.99

97-13 JRI High Performance Double Adjustable Shocks

Prt No.	Year	Description	Price
JRi-C3-CSK	63-82	JRi Double Adjustable Shock - Must use Van Steel Jri Lower Arms	set \$3449.99
JRi-C3-CSK-CO	63-82	JRi Double Adjustable Coilover Shock - Must use Van Steel Jri Lower Arms	set \$3799.99
JRi-RAFT-DA	97-13	JRi Double Adjustable Shocks - RAFT Valving	set \$3129.99
JRi-RAFT-NA	97-13	JRi Non Adjustable Shocks - RAFT Valving	set \$1499.99

14+ JRI High Performance Double Adjustable Shocks

Prt No.	Year	Description	Price
JRI-100-275	14+	Front JRI Double Adjustable Shocks	\$875.99 ea.
JRI-100-274	14+	Rear JRI Double Adjustable Shocks	\$875.99 ea.

1963-82 Rebuilt Control Arms

Van Steel will completely disassemble, jig and refinish your control arms with new bushings and ball joints. All arms receive gloss black powder coat finish. Cross shafts receive a 2 stage epoxy paint. Choose from Economy ball joints or MOOG ball joints. If you plan on keeping the car, we recommend MOOG ball joints



upper left

FS-01 -Rubber	\$149.99
FS-01P -Poly	\$159.99
FS-01M -Rubber MOOG...	\$166.99
FS-01PM -Poly MOOG.....	\$176.99

upper right

FS-02 -Rubber	\$149.99
FS-02P -Poly	\$159.99
FS-02M -Rubber MOOG...	\$166.99
FS-02PM -Poly MOOG.....	\$176.99

lower left

FS-18 -Rubber	\$159.99
FS-18P -Poly	\$163.99
FS-18M -Rubber MOOG...	\$166.99
FS-18PM -Poly MOOG.....	\$176.99

lower right

FS-19 -Rubber	\$159.99
FS-19P -Poly	\$163.99
FS-19M -Rubber MOOG...	\$166.99
FS-19PM -Poly MOOG.....	\$176.99

ALL FOUR with Polyurethane Bushings

AR-04 -Rubber Bushings - Economy Ball Joints.....	\$459.99
AR-04P -Poly Bushings - Economy Ball Joints.....	\$499.99
AR-04M -Rubber Bushings - MOOG Ball Joints.....	\$559.99
AR-04PM -Poly Bushings - MOOG Ball Joints.....	\$599.99

1884-96 Rebuilt Control Arms

Van Steel will completely disassemble, jig and refinish your control arms with polyurethane bushings and new ball joints. We chemically clean arms to restore OE finish.

Complete Set - Poly

AR-05 -Car Set.....	\$499.99
---------------------	----------

Complete Set - Delrin

AR-05-D -Car Set.....	\$979.99
-----------------------	----------



1997-2013 Rebuilt Control Arms

Van Steel will completely disassemble, jig and refinish your control with Delrin Bushing and New MOOG ball joints. We chemically clean the arms to restore OE Finish.

front

AR-06FD - 97-13 base & ZO6 w/Delrin Bushings.....	\$689.99
---	----------

rear

AR-06RD - 97-13 w/Delrin Bushings	\$689.99
AR-06RZD - 06-13 ZO6 w/Delrin Bushings	\$689.99

Delrin Bushings

VS-97461 - 06-13 Aluminum Frame Delrin Kit.....	\$1,265.99
VS-97462 - 97-13 Steel Frame Delrin Kit.....	\$1,149.99





REBUILD

complete kits



1963-82 Front Suspension Rebuild Kits

Prt No.	Description	Price
FSK-01	Economy Kit – Rubber	\$269.99
FSK-01P	Economy – Poly	\$299.99
FSK-02	Mixed – Rubber	\$419.99
FSK-02P	Mixed – Poly	\$459.99
FSK-03	All Moog – Rubber	\$499.99
FSK-03P	All Moog – Poly	\$549.99

Economy Kits - All House Brand Except Moog Idler A-arm. Mixed kits have the upgraded Moog upper & lower ball joints. Everything else in the kit is our house brand line. Moog Idler Arms are included in Economy & Mixed Kits.

Includes:

- Upper & Lower Ball Joints
- Upper & Lower A-Arm Bushings
- (2) Inner & (2) Outer Tie Rod Ends
- Idler Arm
- Sway Bar End Links



1963-82 Rear Suspension Rebuild Kits

Prt No.	Year	Description	Price
RSM-01	63-74	Standard Kit – Rubber	\$234.99
RSM-01P	63-74	Standard Kit – Poly	\$244.99
RSM-02	75-82	Standard Kit – Rubber	\$234.99
RSM-02P	75-82	Standard Kit – Poly	\$244.99
RSM-03	63-74	Deluxe Kit – Rubber	\$359.99
RSM-03P	63-74	Deluxe – Poly	\$369.99
RSM-04	75-82	Deluxe Kit – Rubber	\$359.99
RSM-04P	75-82	Deluxe – Poly	\$369.99

Standard Kit Includes:

- 2 Spring Bolts w/Cushions, Nuts, Washers & Retainers
- LH & RH Shock Mounts w/Hardware
- 2 Camber Bolts w/Reducing Washers
- Pinion Bushing
- Moog Idler Arms are included in Economy & Mixed Kits.

Deluxe Kit Includes:

- Standard kit parts
- T-Arm Bushings
- Rear Alignment Shims
- T-Arm Bushing Bolts w/Hardware
- Center Spring Bolts
- 8 Half Shaft to Spindle Flange Bolts
- 4 French Locks





1963-82 Front & Rear Super Kit

Prt No.	Year	Description	Price
FRSK-01AE	63-74	Super Kit - Economy Kit - Rubber	\$709.99
FRSK-01AM	63-74	Super Kit - All Moog - Rubber	\$989.99
FRSK-01BE	63-74	Super Kit - Economy Kit - Poly	\$714.99
FRSK-01BM	63-74	Super Kit - All Moog - Poly	\$1,009.99
FRSK-02AE	75-82	Super Kit - Economy Kit - Rubber	\$709.99
FRSK-02AM	75-82	Super Kit - All Moog - Rubber	\$989.99
FRSK-02BE	75-82	Super Kit - Economy Kit - Poly	\$714.99
FRSK-02BM	75-82	Super Kit - All Moog - Poly	\$1,009.99



1963-82 Control Arm Bumpers

Prt No.	Year	Description	Price
CABK-6364	63-64	Control Arm Bumper Kit	\$89.99
CABK-6574	65-74	Control Arm Bumper Kit	\$41.99
CABK-7582	75-82	Control Arm Bumper Kit	\$52.99



1963-96 Poly Bushing Kits

Prt No.	Year	Description	Price
VS-41448	63-82	Front Kit	\$119.99
VS-41449E	63-74	Rear Kit	\$139.99
VS-41449L	75-82	Rear Kit	\$139.99
VS-41550E	63-74	Front & Rear Kit	\$249.99
VS-41550L	75-82	Front & Rear Kit	\$249.99
VS-84550	84-96	Front Kit	\$129.99
VS-84551E	84-87	Rear Kit	\$149.99
VS-84551L	88-96	Rear Kit	\$149.99
VS-84552K	84-96	Front & Rear Kit	\$289.99



1963-82 Control Arm Hardware Kit

Prt No.	Year	Description	Price
CAHK-6382	63-82	Washers/bolts/lock washers	\$49.99



COMPOSITE SPRINGS

63-19

To best pick your spring rate, we typically ask how you drive your car, small block or big block, and how much power you plan on making. The higher the HP, the higher the rate to prevent the car from squatting too much... but the ride becomes more firm. Small block mid-year Corvettes typically get an EZ ride or 300lb spring, big block cars get a 360. For C3s, we typically run a 330 for small blocks or the EZ Ride for the cruisers. Big blocks get the 360. For Drag setups with high HP, we recommend a 400 spring with double adjustable shocks.

63-82 Springs	EZ Ride	300	330	360	400
ARCH	High	Medium	Low	Low	Low
Base Rate	K=200	K=300	K=330	K=360	K=400
Full Length	HCO12413HPS	HCO31300	HCO31330	HCO31360	N/A
Shorten .500"	N/A	HCO31300.5	HCO31330.5	HCO31360.5	N/A
Shorten 1.00"	1963-82	HCO31300.1	N/A	HCO31360.1	HCO31400.1

1963-82

EZ Ride Springs

200 lb. Rate, Standard High Arch: . HCO12413

This composite design exemplifies the matching of arch to ride. This composite spring closely matches the OEM Steel 9 Leaf rate of 190 lbs. and OEM arch. The "Easy Ride" spring is a perfect upgrade for cruising with great ride quality. Works well on all small block 1963 to 82 Corvettes.

300 lb. Rate, Medium Arch: HCO31300

The Van Steel 300lb composite spring is slightly more rate than an OEM, Steel, 7 leaf F41 spring. A 300 still provides a smooth riding Vette, but helps to reduce squat and increase handling. This spring is great on mid-year vettes that have increased HP, but don't want to sacrifice ride quality QA-1 shock makes this spring really shine.

1984-96

C4: FE1/Base

84-87 Front:HCO12410VSE

88-96 Front:HCO12410VSL

Rear:HCO12411HPS

These front and rear springs are a replacement for the 1984-96 FE1/ base ride package. While maintaining and/or restoring original ride height this unit has a soft rated spring by GM specs. **Front C4 Coming Soon!**

1997-13

C5/6 Spirited Street

C5/6 Fro HCO12405HPS

C5 Rear:..... HCO12406HPS

These springs are designed for spirited street and HPDE driving with street tires. With a 10% higher spring rate (compared to a Z06) you improve braking with less nose dive, quicker steering response and flatter cornering. *Some noise may occur as Delrin low profile adjusters are used.*

Increased Handling/Sport Springs

330 lb. Rate, Low Arch: HCO31330

The Van Steel 330lb composite spring is more performance oriented with 14% more spring rate than an OEM, Steel, 7 leaf F41 spring. Ideal for increased handling without sacrificing ride quality.

360 lb. Rate, Low Arch: HCO31360

With a slightly firmer ride quality, the 360 spring is for those where handling comes first. The firmer spring rate reduces squat which allows for a lower ride height but without extra strain on the half shaft u-joints. This spring is recommended for high HP small block & big block Vettes.

400 lb. Rate, Low Arch: HCO31400

Designed for track performance with high horsepower, this spring has a firmer ride quality, while allowing a lower ride height. Minimize squat in extreme power down demands. Rear Wheel horsepower is 450 plus. Comes 1" shortened for max tire clearance. A must for advanced drag racers.

C4: Z51/Sport

84-87 Front: HCO12403VSE

88-96 Front: HCO12403VSL

Rear: HCO12404HPS

These front and rear springs are a direct replacement and/or upgrade for the 1984-96 Z51 handing package. Designed for spirited street and light track driving, ride quality is slightly diminished. **Front C4 Coming Soon!**

C5/6 Track

C5/6 Front: HCO12407HPT

C5 Rear: HCO12408HPT

C6 Rear:.....HCO12409HPT

These springs are based on GM's T1 race package. We have increased the spring rate 10% and included Delrin ride height adjusters. These are for advanced street and entry level track applications.



Composite Springs & Kits with Shocks

Van Steel composites springs are built to an OEM quality. They are built to last and out perform a steel spring. Shortened springs allow for better spring to tire clearance.

Kits Include:

- Rear Shocks
- 8" bolt kit and bushings

Springs without shocks require an 8" bolt kit.

OEM steel spring rates for comparison:

- Base FE7: 180-200lbs
- Sport F41: 280lbs



1963-82
- high arch



EZ Ride Composite Springs

Prt No.	Arch	Rate	QA1	Shortened	Price
HCO12413HPSK	Stock	220	None	NO	\$399.99
HCO12413Q	Stock	220	QA1	NO	\$699.99
HCO31300	Low	285-300	None	1"	\$439.99
HCO31300Q	Low	285-300	QA1	1"	\$739.99



1963-82
- low arch

Small Block Composite Springs

Prt No.	Arch	Rate	QA1	Shortened	Price
HCO31330	Low	330	None	NO	\$439.99
HCO31330Q	Low	330	Non Adjust	NO	\$739.99
HCO31330QS	Low	330	Single	NO	\$799.99
HCO31330.5	Low	330-345	None	1/2"	\$439.99
HCO31330.5Q	Low	330-345	Non Adjust	1/2"	\$739.99
HCO31330.5QS	Low	330-345	Single	1/2"	\$799.99

Big Block/Handling Composite Springs

Prt No.	Arch	Rate	QA1	Shortened	Price
HCO31360	Low	360	None	NO	\$439.99
HCO31360Q	Low	360	Sport	NO	\$749.99
HCO31360QS	Low	360	Single	NO	\$799.99
HCO31360.5	Low	360-375	None	1/2"	\$439.99
HCO31360.5Q	Low	360-375	Sport	1/2"	\$749.99
HCO31360.5QS	Low	360-375	Single	1/2"	\$799.99
HCO31360.1	Low	350-370	None	1"	\$439.99
HCO31360.1Q	Low	350-370	Sport	1"	\$749.99
HCO31360.1QS	Low	350-370	Single	1"	\$799.99

Drag Racing Composite Springs

Prt No.	Arch	Rate	QA1	Shortened	Price
HCO31400.1	Low	360-375	None	1"	\$439.99
HCO31400.1Q	Low	360-375	Sport	1"	\$749.99
HCO31400.1QD	Low	360-375	Double	1"	\$999.99

Bolt Kits

Prt No.	Description	Price
SG-06L8	8" Bolt Kit - Bolts & nyloc nuts	\$19.99
SG-11P8K	8" Bolt Kit w/Poly Bushings	\$39.99

1984-2014 Composite Springs



1984-96

Coming Soon

1984-87 Front

Prt No.	Location	Rate	Description	Price
HCO12410VSE	Front	K=330	FE1 - Base Spring	CALL
HCO12403VSE	Front	K=500	Z51 - Performance Spring	CALL

1988-96 Front

Prt No.	Location	Rate	Description	Price
HCO12410VSL	Front	K=330	FE1 - Base Spring	CALL
HCO12403VSL	Front	K=500	Z51 - Performance Spring	CALL

1984-96 Rear

Prt No.	Location	Rate	Description	Price
HCO12411HPS	Rear	K=228	FE1 - Base Spring	\$499.99
HCO12404HPS	Rear	K=326	Z51 - Performance Spring	\$499.99

Bolt Kits

Prt No.	Description	Price
SG-06L10	10" Bolt Kit - Bolts & nyloc nuts	\$19.99
SG-11P10KC4	10" Bolt Kit w/Poly Bushings	\$39.99



1997-2013

1997-13 Front

Prt No.	Model	Rate	Description	Price
HCO12405HPS	Z06+10%	K=571	Z06 Style +10% Rate	\$669.99
HCO12407HPS	T1+10%	K=634	T1 Style +10% Rate	\$669.99

1997-04 Rear

Prt No.	Model	Rate	Description	Price
HCO12406HPS	Z06+10%	K=777	Z06 Style +10% Rate	\$669.99
HCO12408HPS	T1+10%	K=850	T1 Style +10% Rate	\$669.99

2005-13 Rear

Prt No.	Model	Rate	Description	Price
HCO12409HPS	T1+10%	K=850	T1 Style +10% Rate	\$669.99

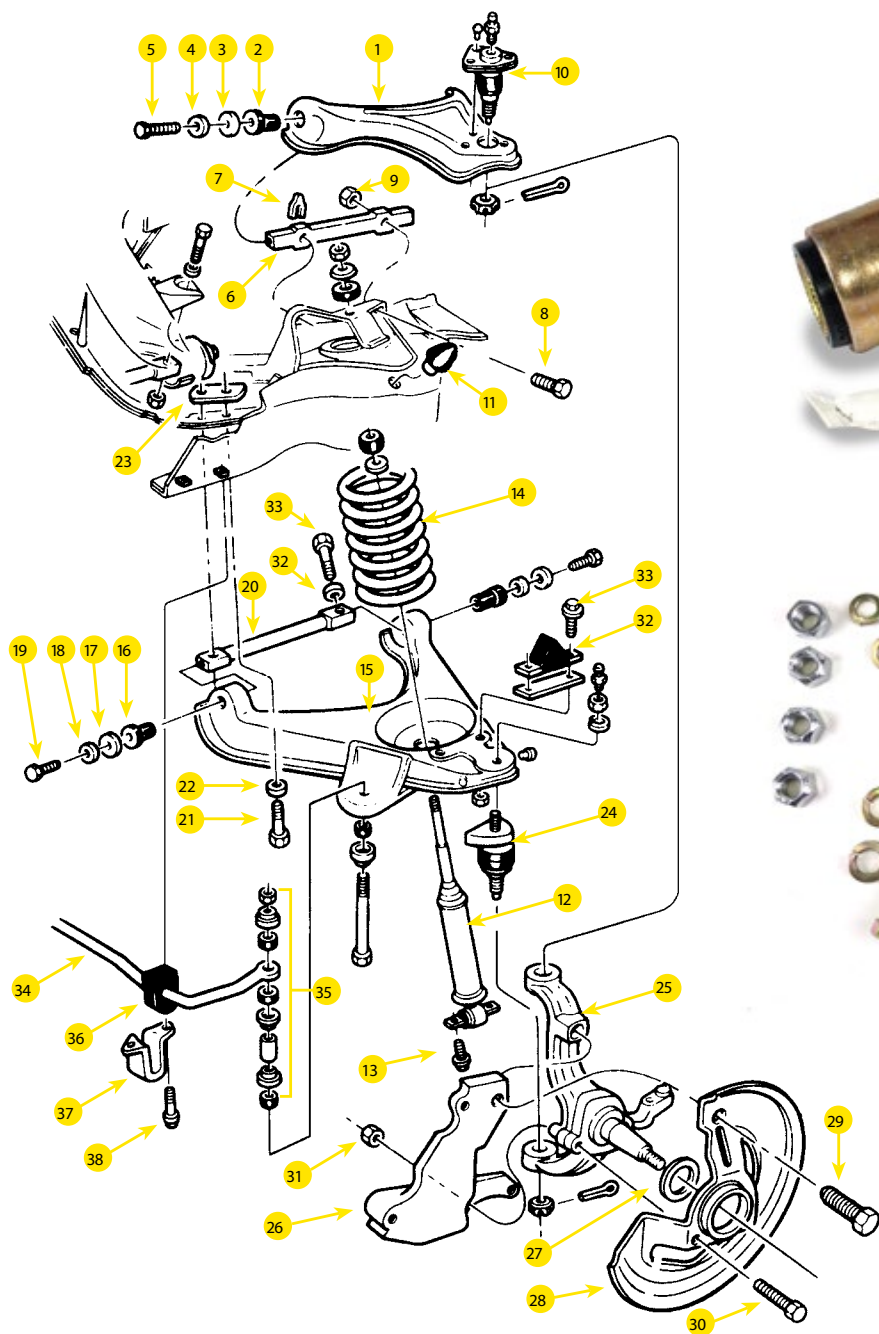
Adjusters/Bolt Kits

Prt No.	Description	Price
HCO-HB-C5/6-ADJ	97-13 Hard Bar Spring Adjuster (pair)	\$19.99
SG-11PK-C5	8" Bolt Kit w/Poly Bushings (C5 Rear only)	\$39.99



FRONT SUSPENSION

63-82 parts listing



FS-03PK



CAHK-6382



FS-09E



FS-03G

1963-82 Front Suspension

Prt No.	Ilus No.	No. Car	Year	Description	Price
CAHK-6382	—	1	63-82	Control Arm Hardware Kit	\$49.99
FS-01	1	1	63-82	Rebuilt LH Upper A-Arm	See Pg. 13
FS-02	1	1	63-82	Rebuilt RH Upper A-Arm	See Pg. 13
FS-03K	2	4	63-82	Upper A-Arm Bushings – Rubber (car set)	\$17.99
FS-03PK	2	4	63-82	Upper A-Arm Bushings – Poly (car set)	\$39.99
FS-03G	2	4	63-82	Upper A-Arm Bushings – Correct (car set)	\$48.99
FS-04K	3	4	63-82	Upper A-Arm Retaining Washer	\$3.99

Highlight denotes parts shown on page



FS-17

EXCLUSIVE VAN STEEL DESIGNS



69-82
Front Hub
FB-15C



FS-27K



FS-12



FS-31



FS-42

1963-82 Front Suspension

Prt No.	Ilus No.	No. Car	Year	Description	Price
FS-05K	4	4	63-82	3/8" Lock Washer	\$0.99
FS-06K	5	4	63-82	Upper A-Arm Bushing Bolt	\$1.99
FS-07K	6	4	63-82	Upper A-Arm Cross Shaft Kit - USED	\$99.99
FS-07-OS	6	2	63-82	Offset Upper A-Arm Shaft Kit	\$79.99
FS-09E	8	4	63-67	Upper A-Arm Alignment Stud	\$6.99
FS-09L	8	4	68-82	Upper A-Arm Alignment Stud	\$6.99
FS-11	10	2	63-82	Upper Ball Joint - Economy	\$24.99
FS-11B	10	2	63-82	Upper Ball Joint - MOOG	\$71.99
FS-12	11	2	63-82	Front Upper Bump Stop	\$6.99
FS-14	12	2	63-82	Front KYB GR2 Shock	\$44.99
FS-16	13	4	63-82	Lower Shock Mount Bolts (car set)	\$7.99
FS-17	14	2	63-82	Small Block Coil Springs (460#'s)	\$84.99
FS-17B	14	2	63-82	Big Block Coil Springs (550#'s)	\$84.99
FS-18	15	2	63-82	Rebuilt LH Lower A-Arm	See Pg. 13
FS-19	15	2	63-82	Rebuilt RH Lower A-Arm	See Pg. 13
FS-20K	16	4	63-82	Lower Rubber A-Arm Bushings (car set)	\$21.99
FS-20PK	16	4	63-82	Lower Poly A-Arm Bushings (car set)	\$39.99
FS-21	17	4	63-82	Lower A-Arm Retaining Washer	\$2.99
FS-22K	18	4	63-82	Lower A-Arm Lock Washers (4 pk)	\$0.99
FS-23K	19	4	63-82	Lower A-Arm Bushing Retainer Bolt Kit	\$1.99
FS-24K	20	2	63-82	Lower A-Arm Cross Shaft Kit	\$99.99
FS-27K	23	2	63-82	Lower A-Arm 2-Hole Plate with Bolt Kit	\$16.99
FS-28	32	2	63-82	Lower A-Arm Rear Bolt w/Nut	\$3.99
FS-31	24	2	63-82	Lower Ball Joint - Economy	\$23.99
FS-31B	24	2	63-82	Lower Ball Joint - MOOG	\$49.99
FS-36E	25	2	63-68	Front Spindle w/Steering Arm	\$195.99
FS-36L	25	2	69-82	Front Spindle w/Steering Arm	\$195.99
FB-08C	28	1	63-82	RF Backing Plate - Correct	\$47.99
FB-08G	28	1	63-82	RF Backing Plate - Gold	\$30.99
FB-08S	28	1	63-82	RF Backing Plate - Silver	\$30.99
FB-09C	28	1	63-82	LF Backing Plate - Correct	\$47.99
FB-09G	28	1	63-82	LF Backing Plate - Gold	\$30.99
FB-09S	28	1	63-82	LF Backing Plate - Silver	\$30.99
FB-11K	27	2	63-82	Front Spindle Gasket (pair)	\$7.99
FB-12E	26	1	65-68	LH Front Caliper Mounting Bracket - Early	\$49.99
FB-12L	26	1	69-82	LH Front Caliper Mounting Bracket - Late	\$29.99
FB-13E	26	1	65-68	RH Front Caliper Mounting Bracket - Early	\$49.99
FB-13L	26	1	69-82	RH Front Caliper Mounting Bracket - Late	\$29.99
FB-15CE	-	2	63-68	New Front Hub Complete w/Bearings	\$239.99
FB-15C	-	2	69-82	New Front Hub Complete w/Bearings	\$239.99
FS-37	29	2	65-82	Front Upper Backing Plate Bolt (pair)	\$24.99
FS-38K	30	4	63-82	Front Lower Spindle Bolt w/Nut Kit	\$2.99
FS-42	-	2	63-68	Timken Front Wheel Bearing Kit - Early	\$34.99
FS-44	-	2	69-82	Timken Front Wheel Bearing Kit - Late	\$36.99
FS-46	-	2	63-68	Front Spindle Nut Washer	\$4.99
FS-47	-	2	69-82	Front Spindle Nut Washer	\$4.99
BA-41	-	2	63-68	3/4-20 Spindle Nut	\$4.99
FS-48	-	2	69-82	Spindle Nut	\$12.99
CF-18	-	2	63-82	Cotter Pin - 1/8 x 1-1/2	\$0.99
FS-49	-	2	63-68	Grease Cap	\$11.99
FS-50	-	2	69-82	Grease Cap	\$5.99
FS-52	32	2	63-82	Lower A-Arm Bump Stop	\$7.99
FS-57PK	35	2	63-82	Poly Sway Bar End Link Kit (pair)	\$22.99
FS-71PK	-	2	63-82	Poly Ball Joint Boots (car set)	\$11.99
FS-72PK	-	4	63-82	Poly Tie Rod End Boots (pair)	\$6.99
SK-01	7	-	63-82	Front Alignment Shim Kit	\$19.99
ASB-B	36	1	63-82	Poly Sway Bar Bushings	SEE PG 36



SUSPENSION STIFFENING

Bushings & Braces 63-18

84-18 Delrin Bushing Kits

Prt No.	Year	Discription	Price
VS-97469	84-96	C4 Delrin Bushing Kit - Coming Soon	\$949.99
VS-97461	06-13	C6 Z06/ZR1 Delrin Bushing Kit - Alum Frame	\$1265.99
VS-97462	97-13	Delrin Bushing Kit - Steel Frame	\$1149.99
VS-97463	97-13	Front Upper Delrin Kit	\$299.99
VS-97464	97-13	Front Lower Delrin Kit	\$299.99
VS-97465	08-13	C6 ZO6 Rear Upper Delrin Kit - Aluminum Frame	\$399.99
VS-97466	97-13	Rear Lower Delrin Kit	\$299.99
VS-97467	97-13	Rear Upper Delrin Kit - Steel Frame	\$299.99
VS-97468	14+	C7 Complete Delrin Bushing Kit	\$1599.99



VS-97462

97-14+ Camber Plates

Prt No.	Year	Discription	Price
VS-97473	97-13	Upper Control Arm Stud/Shim Kit	\$62.99
VS-97470	97-13	Camber Plate & Alignment Kit - Steel Frame	\$374.99
VS-97471	06-13	Camber Plate & Alignment Kit - Aluminum Frame	\$422.99
VS-97472	14+	C7 Camber Plate & Alignment Kit	\$489.99



VS-97472

63-82 Poly Kits

Prt No.	Year	Discription	Price
VS-41448	63-82	Front Poly Conversion Kit	\$119.99
VS-41449E	63-74	Rear Poly Conversion Kit	\$139.99
VS-41449L	75-82	Rear Poly Conversion Kit	\$139.99
VS-41550E	63-74	Front & Rear Poly Conversion Kit	\$249.99
VS-41550L	75-82	Front & Rear Poly Conversion Kit	\$249.99
SG-80	80-82	Poly Cross Member Bushing Kit	\$30.99
SG-54	63-79	Differential Delrin Kit	\$249.99
SG-11P6K	63-82	6" Spring Bolt Kit w/poly Bushings	\$35.99
SG-11P8K	63-82	8" Spring Bolt Kit w/poly Bushings	\$39.99
SG-07P	63-82	Rear Spring Cushings - Poly	\$22.99
FS-71PK	63-82	4-Piece Poly Ball Joint Boot Kit	\$11.99
FS-72PK	63-82	2-Piece Poly Tie Rod End Kit	\$6.99



VS-42222

84-96 Poly Kits

Prt No.	Year	Discription	Price
VS-84552	84-96	Front & Rear Poly Conversion Kit	\$289.99
VS-84550	84-96	Front Poly Conversion Kit	\$129.99
VS-84551E	84-87	Rear Poly Conversion Kit	\$149.99
VS-84551E	88-96	Rear Poly Conversion Kit	\$149.99
SR-204P	84-87	Poly Strut Rod Bushings	\$30.99
SR-205P	88-96	Poly Strut Rod Bushings	\$30.99
TA-207	84-96	Poly Trailing Arm Bushing Kit	\$69.99
SG-11P10KC4	84-96	10" Spring Bolt Kit w/poly	\$69.99
SG-8496	84-96	Poly Cross Member Bushings	\$29.99
FS-72-C4	84-96	Poly Ball Joint Boot (car set)	\$5.99

1963-96 Chassis Braces

Prt No.	Year	Discription	Price
VS-42222	63-82	Spreader Bar	\$129.99
FS-8489-CB	84-89	Front Camber Brace - L98	\$219.99
FS-9296-CB	92-96	Front Camber Brace - LT-1/LT-4	\$219.99



FS-9296-CB



1963-74

P/S Conversion Kits

Upgrade your 1963-74 Corvette manual steering system with a power steering conversion kit. Quality components and hardware insure improved handling along with driver comfort. All conversion kits have a 1-year limited warranty.

- Power Steering Control Valve and Cylinder
- Power Steering Pump
- Centerlink, Hoses and Pitman Arm
- Brackets and Hardware
- 2 Pints of Power Steering Fluid
- Detailed Instructions

VS-22854 63-74 Small Block (non hypo)	\$1229.99
VS-22855 63-74 Small Block (hypo only)	\$1329.99
VS-22856 65-69 Big Block	\$1329.99
VS-22857 70-74 Big Block	\$1329.99



1963-82 P/S Valves

VS-11801N New Valve \$229.99

New seals, bolts, stone, shield and tube seats. Pressure tested and adjusted.



1963-82 P/S Cylinder

VS-12802 Rebuilt Cylinder \$122.99

All new chrome shafts, seals, tube seats, cushions and hardware. Pressure tested. 5-year limited warranty. Price shown is exchange.

Core charge \$160.00

VS-11802N **NEW** Valve \$164.99



1963-82 P/S Rebuilt Component Kit



VS-22851 63-79 (small block) \$409.99

VS-22852 80-82 (big block) \$409.99

VS-22853 65-74 (big block) \$409.99

Core Charge (30 days) \$60.00

Component Kit includes new valve and rebuilt cylinder (both shown above), new hoses and 2 pints of fluid.

1963-82 Power Steering Hose Kits

VS-21821 63-79 SB \$71.99

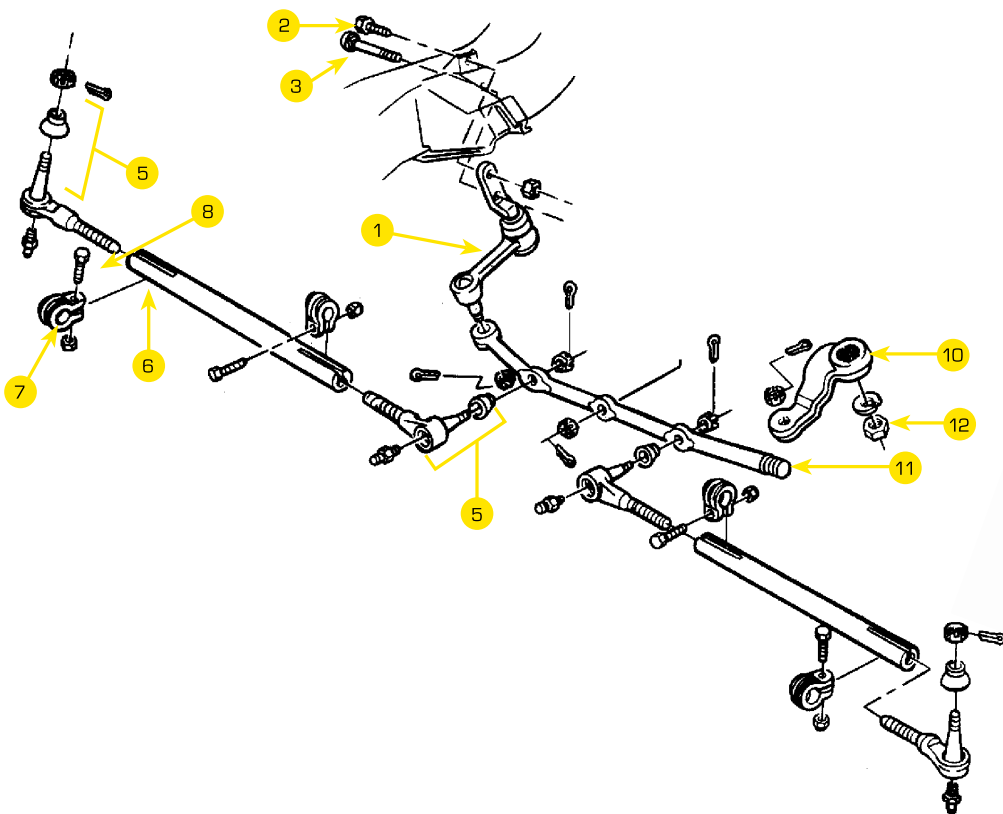
VS-21822 80-82 \$71.99

VS-21823 65-74 BB \$71.99



STEERING

63-82



ST-01B



ST-09BSK



ST-09 - Bar

1963-82 Steering

Prt No.	Ilus No.	No. Car	Year	Description	Price
ST-01B	1	1	63-82	Idler Arm - Moog	\$99.99
ST-03	2	1	63-82	Upper Idler Arm Bolt w/Nut	\$0.99
ST-04	3	1	63-82	Lower Idler Arm Bolt w/Nut	\$4.99
ST-07	5	1	63-82	LH Threaded Tie Rod End - House Brand	\$21.99
ST-07B	5	1	63-82	LH Threaded Tie Rod End - Moog	\$45.99
ST-08	5	1	63-82	RH Threaded Tie Rod End - House Brand	\$21.99
ST-08B	5	1	63-82	RH Threaded Tie Rod End - Moog	\$45.99
ST-09	6	2	63-82	Tie Rod Sleeve w/Clamps, Nuts & Bolts	\$33.99
ST-09HD	6	2	63-82	HD Tie Rod Sleeves (pair)	\$49.99
ST-09BSK	6	2	63-82	Bump Steer Kit	\$379.99
ST-10	7	4	63-82	Tie Rod Clamp, Nut & Bolt	\$5.99
ST-13	10	1	63-76	Pitman Arm - Non Power Steering - Used	\$49.99
ST-14	10	1	63-82	Pitman Arm - Factory Power Steering - Used	\$49.99
ST-18	-	1	63-67	Non-Power Steering Absorber - Replacement	\$122.99
ST-18C	-	1	63-67	Non-Power Steering Absorber - Correct	\$143.99
ST-20	11	1	63-82	Center link - Power - New	\$199.99
ST-21	11	1	63-76	Center link - Non-Power - New	\$199.99
ST-25	-	1	63-82	Boot, Clamp w/out Stud	\$39.99
ST-25S	-	1	63-82	N/P Center Link Master Rebuild Kit	\$78.99
ST-27K	-	1	63-82	Tie Rod Ends (4pc)	\$79.99
ST-27KM	-	1	63-82	Tie Rod Ends - MOOG - (4pc)	\$165.99
FS-72P	-	2	63-82	Poly Tie Rod End Boots (pair)	\$11.99



ST-25



FS-72P

Highlight denotes parts shown on page

GBK-01



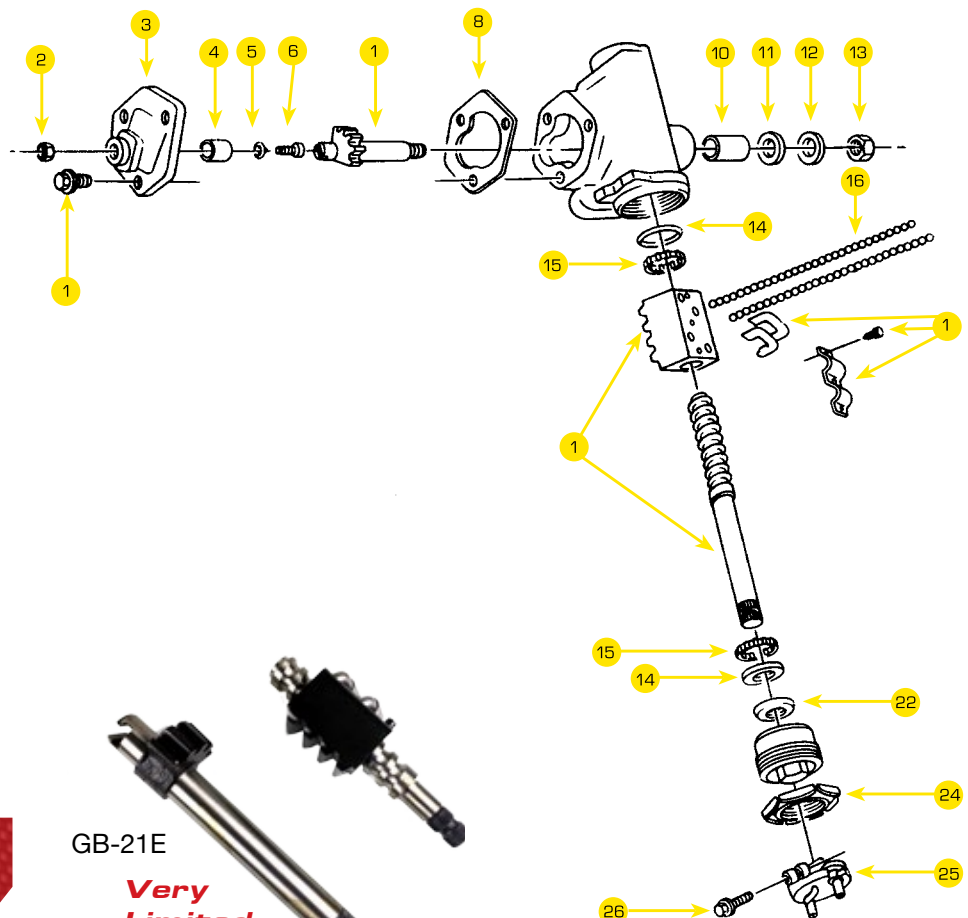
GB-27L

1963-82 - Small Block Borgeson Steering Boxes



Convert your leaky OE power steering valve and cylinder to a true power steering Borgeson Box. Fits in the stock location as OE steering box and offers a quicker steering ratio of 12.7:1. Included with the box for factory P/S cars are new lines that get plumbed right to the OE P/S pump, new steering coupler and an adapter that screws onto your factory center link. Just re-use your OE pitman arm. Call for new 10-1 ratio pricing.

GB-BORG-E 63-66 w/Factory Power Steering.....	\$839.99
GB-BORG-L 67-82 w/Factory Power Steering	\$839.99
GB-BORG-EM 63-66 w/Factory Manual Steering	\$1009.99
GB-BORG-LM 67-82 w/Factory Manual Steering	\$1009.99
GB-BORG-RM 63-82 Reinforcement Bracket	\$79.99



GB-21E

**Very
Limited
Quantities**

1963-82 Steering Box

Prt No.	Ilus No.	No. Car	Year	Description	Price
GB-21E	1	1	63-69	NEW Worm Gear w/ Pitman Shaft**	\$299.99
GB-25A	2	1	63-66	Lower Steering Coupler - Non-Telescopic	\$102.99
GB-25B	2	1	67-69	Lower Steering Coupler w/Ground	\$102.99
GB-25C	2	1	63-66	Complete Steering Coupler w/Ground - Non-Telescopic	\$154.99
GB-25D	2	1	63-66	Complete Steering Coupler w/Ground - Telescopic	\$154.99
GB-25E	2	1	67-69	Complete Steering Coupler	\$163.99
GB-25F	2	1	69-82	Steering Coupler	\$51.99
GB-27E	-	1	63-69	Steering Box Rebuild	\$189.99*
GB-27L	-	1	69-82	Steering Box Rebuild	\$189.99*
GB-27LEB	-	1	63-69	New Box Rebuild	\$404.99
GB-24LNB	-	1	69-82	New Box Rebuild	\$404.99
GB-32	-	1	63-82	Steering Box Carriage Bolt Kit (3)	\$14.99
GBK-01	-	1	63-82	Steering Box Rebuild Kit	\$81.99

NOTE 69 Non-Power Steering should refer to Early steering parts. 69 Power Steering should refer to Late steering parts.
SEE WEBSITE FOR INDIVIDUAL STEERING BOX PARTS.

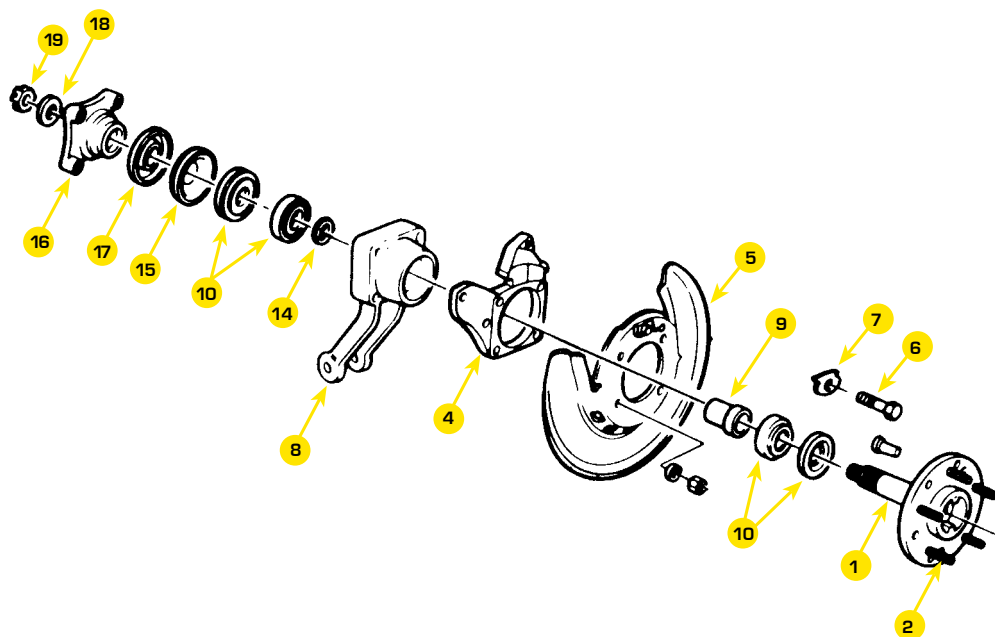
* Add a \$100 Core Charge for Exchange Units

** VERY LIMITED QUANTITIES, While Supplies Last

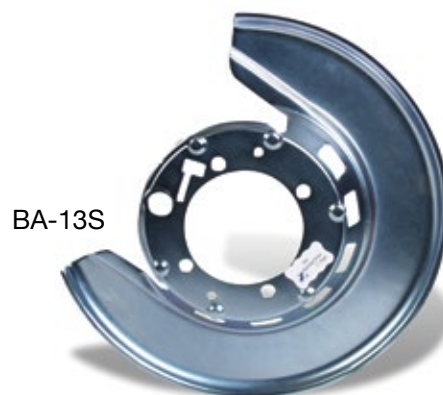


BEARING ASSEMBLY

63-82



BA-01



BA-13S

1963-82 Bearing Assembly

Prt No.	Ilus No.	No. Car	Year	Description	Price
BA-01	1	2	63-64	Drum Brake Spindle	\$194.99
BA-02	1	2	65-82	Disc Brake Spindle	\$139.99
BA-02A	1	2	65-82	Disc Brake Spindle - American Made	\$209.99
BA-04	2	20	65-82	Disc Spindle Lug Stud	\$1.99
BA-04R	2	4	63-82	ARP 7/16-20x3 Lug Stud (5)	\$20.99
BA-09	4	1	65-82	New LH Caliper Mounting Bracket	\$64.99
BA-10	4	1	65-82	New RH Caliper Mounting Bracket	\$64.99
BA-13S	5	1	65-74	LH Backing Plate - Silver - Repro	\$30.99
BA-13G	5	1	75-82	LH Backing Plate - Gold - Repro	\$30.99
BA-13C	5	1	65-74	LH Backing Plate - Silver - Correct	\$47.99
BA-14S	5	1	65-74	RH Backing Plate - Silver - Repro	\$30.99
BA-14G	5	1	75-82	RH Backing Plate - Gold - Repro	\$30.99
BA-14C	5	1	65-74	RH Backing Plate - Silver - Correct	\$47.99
BA-15	6	2	65-82	Parking Brake Anchor Bolt	\$1.99
BA-16	7	2	65-82	Parking Brake Shoe Guide Plate	\$3.99
BA-42	-	2	65-82	Parking Brake Anchor	\$14.99
BA-21	8	1	63-82	New LH Bearing Support - American Made	\$249.99
BA-22	8	1	63-82	New RH Bearing Support - American Made	\$249.99
BA-21i	8	1	63-82	New LH Bearing Support - Import	\$149.99
BA-22i	8	1	63-82	New RH Bearing Support - Import	\$149.99
BA-21iK	8	1	63-82	New LH Bearing Support - With Shim/Bearings	\$219.99
BA-22iK	8	1	63-82	New RH Bearing Support - With Shim/Bearings	\$219.99
BA-27	10	1	63-82	Rear Wheel Bearing & Seal Kit/Per Wheel	\$37.99
BA-28	9	2	63-82	Bearing Support Spacer	\$14.99



BA-21iK

Complete with spacer/shims/bearings installed

BA-16



BA-28



BA-27





HS-11

1963-82 Bearing Assembly

Prt No.	Ilus No.	No. Car	Year	Description	Price
BA-38	14	–	63-82	Rear Bearing Shim & Spacer Kit (2 spacers, 9 shims)	\$46.99
BA-39	10	2	63-82	Bearing Support Dust Shield	\$5.99
BA-40	10	2	63-82	Spindle Nut Washer	\$7.99
BA-41	13	2	63-82	Spindle Nut	\$4.99
CF-16	–	2	63-82	Spindle Nut Cotter Pin	\$0.99
HS-11	14	2	63-79	New Spindle Flange	\$84.99
HS-12	14	2	80-81	Spindle Flange – Auto – Used	\$99.99
HS-13	14	2	80-82	Spindle Flange – 4 Spd – All 82 – Used	\$99.99
HS-14	15	2	63-82	Spindle Flange Shield	\$5.99
HS-15	–	2	63-79	French Locks (4 pack)	\$7.99
HS-15-S	–	2	63-79	French Locks (4 pack) - Stainless Steel	\$13.99

1984-96 Hub Bearings

Prt No.	Ilus No.	No. Car	Year	Description	Price
FB-8490	–	2	84-90	Front Timken Hub Bearing - American Made	\$245.99
FB-9196	–	2	91-96	Front Timken Hub Bearing - American Made	\$399.99
RB-8496	–	2	84-96	Rear Timken Hub Bearing - American Made	\$209.99



BA-38

1997-2013 Hub Bearings

Prt No.	No. Car	Year	Description	Price
FBRB-9708-SKF	4	97-08	Front/Rear SKF Racing Hub Bearing	\$389.99
FBRB-9708-SKFHD	4	97-08	Front/Rear SKF Racing Hub Bearing w/HD Stud	\$404.99
FBRB-1013-ZR1	4	10-13	Front/Rear ZR1 Hub Bearing	\$409.99
FBRB-BOLT KIT	4	10-13	Bearing Bolt Kit (4 per car)	\$39.99



FB-8490

FBRB-BOLT KIT

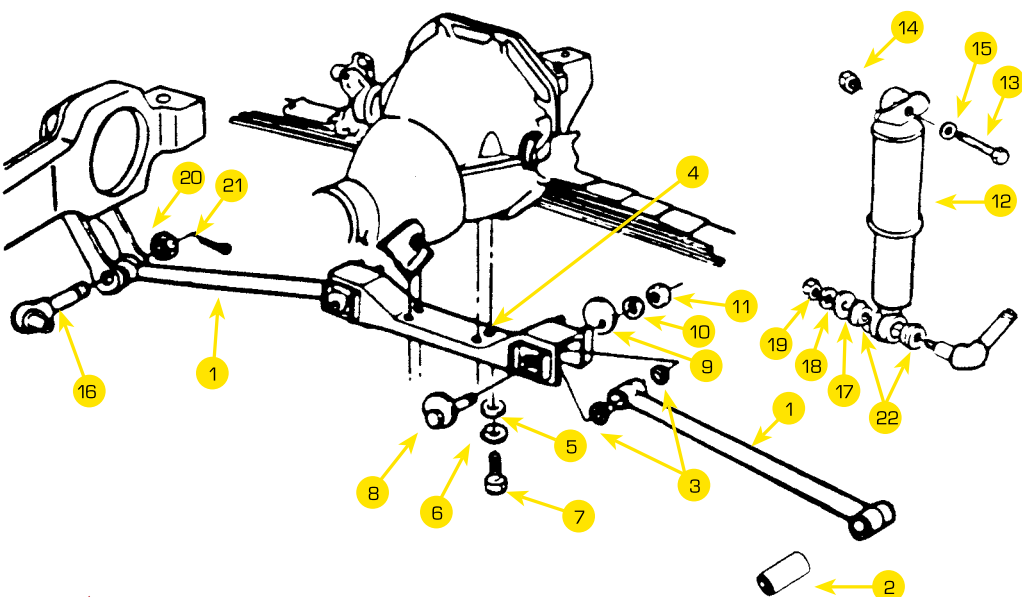


FBRB-9708SKF

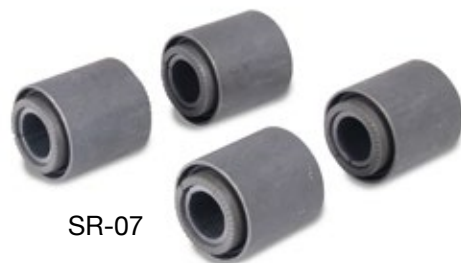


STRUT ROD

63-82



SR-05



SR-07



SR-06P



SS-01K



SS-02K



1963-82 Strut Rod

Prt No.	Ilus No.	No. Car	Year	Description	Price
SR-02	1	2	63-74	New Strut Rod - Factory Style	\$57.99
SR-03	1	2	75-79	New Strut Rod - Factory Style	\$57.99
SR-04	1	2	80-82	New Strut Rod - Factory Style	\$57.99
SR-05	1	2	63-82	Adjustable Strut Rods w/Forged Ends - Poly	\$153.99
SR-05HDK	1	2	80-82	HD Adjustable Smart Struts w/Heims	\$219.99
SR-05L	1	2	80-82	Adjustable Strut Rods w/Forged Ends - Poly	\$153.99
SR-06	2	4	63-74	Rubber Strut Rod Bushing (ea)	\$15.99
SR-06P	2	4	63-74	Poly Strut Rod Bushing (car set)	\$39.99
SR-07	2	4	75-82	Rubber Strut Rod Bushing (ea)	\$15.99
SR-07PK	2	4	75-82	Poly Strut Rod Bushing (car set)	\$39.99
SR-08K	3	4	63-82	Strut Rod Reducing Washers (4 pcs)	\$7.99
SR-13K	7	4	63-82	Strut Rod Bracket Mounting Bolts w/Washers (car set)	\$1.99
SS-01K	1	2	63-79	Smart Strut w/Poly Bushings	\$245.99
SS-06RK	1	2	63-79	Smart Strut w/Heim Ends (Racing)	\$349.99
SS-02K	1	2	80-82	Smart Strut w/Poly Bushings	\$256.99
SS-02RK	1	2	80-82	Smart Strut w/Heim Ends (Racing)	\$379.99

Highlight denotes parts shown on page



SR-17

1963-82 Strut Rod

Prt No.	Ilus No.	No. Car	Year	Description	Price
SR-17K	—	2	63-82	Camber Bolt Kit (pair)	\$27.99
SR-18	12	2	63-82	Rear KYB GR-2 Shocks	SEE PAGE 12
SR-20K	13	2	63-82	Upper Shock Mount Bolt w/Lock Washer & Nut	\$2.99
SR-21K	16	1	63-82	LH Shock Mount w/Hardware	\$47.99
SR-22K	16	1	63-82	RH Shock Mount w/Hardware	\$47.99
SR-21/22K	16	1	63-82	LH & RH Shock Mount w/Hardware	\$91.99

1984-96 Strut Rod

Prt No.	Ilus No.	No. Car	Year	Description	Price
SR-08K	—	1	84-89	Strut Rod Reducing Washers (4 pcs)	\$7.99
SR-17K	—	1	84-96	Camber Bolt Kit (pair)	\$27.99
SR-204P	—	1	84-87	Strut Rod Bushing - Poly	\$30.99
SR-205P	—	1	88-96	Strut Rod Bushing - Poly	\$30.99
SR-206	—	1	84-96	Adjustable Strut Rods - Poly	\$153.99
SS-03K	1	1	84-96	Smart Struts w/Poly	\$274.99
SS-03RK	1	1	84-96	Smart Struts w/Heim Ends (Racing)	\$399.99
TA-208	—	1	84-96	84-96 DRM Trailing Arm Brackets	\$139.99
RB-207HDK	—	1	84-96	HD Toe Rod Kit	\$369.99



(left)
SR-21K

1984-96 - Complete Rear Heim Kit



SS-03K

SS-04RK..... \$1299.99

- Maintains Precise Rear Toe Settings During Extreme Driving
- Noticeably Improves Handling Predictability
- Gloss Powder Coat Sleeves and Brackets
- Seals-It Dust Boots & Chromoly Tubing
- Remove Bind in Suspension for Improved Traction

Remove all the rear rubber or poly bushing with this complete rear heim conversion kit. Get better contact with the road in all conditions throughout the travel arc. With the included DRM brackets, you'll get reduced anti-squat for better grip under initial hard throttle.

SS-04PK (poly kit) \$999.99

**Includes
DRM Brackets**





REAR BEARINGS

rebuilt & new

Rebuilds = You send us your parts in to rebuild

Exchanges = We front you the parts first and charge you a core charge. Cores are refunded when your parts arrive back to Van Steel and have been evaluated. The parts must be rebuildable to get a full refund.

New = All new parts, NO core.



VAN STEEL SPECIALITY

1963-82

Rear Wheel Bearings

Rebuilt Unit

- We Rebuild Your Unit

Prt No.	Description	Price
BAR-42-L/R	Rebuilt Bearing Assembly - No Rotor	\$209.99/side
BAR-42D-L/R	Drum Brake Bearing Assembly	\$204.99/side
BAR-43-L/R	Rebuilt Bearing Assembly - With Rotor	\$289.99/side

Exchange Unit

- Add \$300 Core Per Side

Prt No.	Description	Price
BAE-42-L/R	Rebuilt Bearing Assembly - No Rotor	\$264.99/side
BAE-42D-L/R	Drum Brake Bearing Assembly w/New Spindle	\$289.99/side
BAE-43-L/R	Rebuilt Bearing Assembly - With Rotor	\$289.99/side

New Unit - No Core

Prt No.	Description	Price
BAN-42-L/R	New Bearing Assembly - No Rotor	\$699.99/side
BAN-42D-L/R	Drum Brake Bearing Assembly (used backing plate)	\$418.99/side
BAN-43-L/R	New Bearing Assembly - With Rotor	\$799.99/side

Your bearing assemblies are disassembled, jig fit and measured, cleaned and receives a two-stage epoxy finish. The assembly is then blueprinted to Van Steel's standards and returned to you with a new backing plate, Timken bearings, races and SKF seals packed w/Timken synthetic grease.

1963-82 T-Arm Assemblies

Rebuilt Unit

- We Rebuild Your Unit

Prt No.	Description	Price
BAR-44S-L/R	Rebuilt T-Arm Assemblies w/ New Rotor	\$409.99/side
BAR-44D-L/R	Rebuilt Drum Brake T-Arms	\$245.99/side

Exchange Unit

- Add \$400 Core Per Side

Prt No.	Description	Price
BAE-44-L/R	Rebuilt T-Arm Assemblies w/ New Rotor	\$409.99/side
BAE-44D-L/R	Rebuilt Drum Brake T-Arms	\$409.99/side

Your bearing assemblies are disassembled, jig fit and measured, cleaned and receives a two-stage epoxy finish. The trailing arms are finished with a durable powder coat and new rubber bushings. The assembly is then blueprinted to Van Steel's standards and returned to you with a new backing plate, Timken bearings, races and SKF seals packed w/Timken synthetic grease. New stainless steel parking brake hardware, GM style shoes and rotor will also be fitted to these units. Rotor run out will be completed as well. This ready to bolt-on unit comes to you with a lifetime warranty.

New Unit - No Core

Prt No.	Description	Price
BAN-44-L/R	New T-Arm Assemblies w/New Rotor	\$1099.99/side
BAN-44D-L/R	New Drum T-Arm Assemblies	\$819.99/side

All drum brake assemblies come with refurbished backing plates. New are not available

Van Steel builds a blueprinted rear wheel trailing arm assembly using all new parts. New trailing arm, new backing plate, new caliper mounting bracket and a new bearing support are used. Timken bearings, races and SKF seals packed w/Timken synthetic grease are included. New stainless steel parking brake hardware, GM style shoes and rotor will also be fitted to these units. Rotor run out will be completed as well. This ready to bolt-on unit comes to you with a lifetime warranty.



BAR-44S

1963-82 Off-set Trailing Arm Assemblies

Rebuilt Unit - We Rebuild Your Bearing Assemblies

Prt No.	Description	Price
BAOR-44-L/R	Rebuilt Bearing Assemblies w/Offset T-Arms	\$1156.99 pr
BAOJR-44-L/R	Rebuilt Bearing Assemblies w/Johnny Joint Offsets (pair)	\$1369.99 pr

Exchange Unit - Add \$250 Core Per Side

Prt No.	Description	Price
BAOE-44- L/R	Rebuilt Bearing Assemblies w/Offset T-Arms	\$1229.99 pr
BAOJE-44-L/R	Rebuilt Bearing Assemblies w/Johnny Joint Offsets (pair)	\$1599.99 pr

With NEW Bearing Assemblies - No Core

Prt No.	Description	Price
BAON-44-L/R	New Bearing Assemblies w/Offset T-Arms	\$2089.99 pr
BAOJN-44-L/R	Rebuilt Bearing Assemblies w/Johnny Joint Offsets (pair)	\$2249.99 pr



1963-82 Off-set Trailing Arms

Prt No.	Description	Price
TA-07	Standard Offset T-Arm	\$499.99 pr
TA-07D	Double Offset T-Arm	\$529.99 pr

- Improved Design Improves Ease of Installation
- Increases Wheel Back-space Clearance Over Stock T-Arms
- Accepts OEM Size Nose Bushings
- Durable Gloss Black Powder Coating Finish
- Van Steel Limited Lifetime Warranty

T-arm is offset 2 inches. By running an offset trailing arm, it will allow you to run a wider tire on a stock rim or run a wider aftermarket rim and tire. T-Arms come powder coated gloss black and come with poly bushings. All arms are made in America. They are 1/4" thick, c-channel, laser cut and jig welded.

The differences between the (TA-06) standard offset t-arms and the (TA-06D) double offset t-arms is that the double offsets have the spring bolt hole moved in 1" on each side. You must buy a 1" shortened spring (per side). Customers use the double offsets when they run a 15" or 16" tire package. The additional inboard clearance is crucial b/c of side wall flex during a turn. If you plan on running a 17" wheel or taller, we would recommend you run a standard offset arm. On a 17" wheel you still may have to buy a shortened spring but that will depend on rims width. We recommend you call us with what you have in mind, and we can help guide you in the right direction.

Exclusive Van Steel Design



Trailing Arms w/ Johnny Joints

Prt No.	Description	Price
TA-07-JJ	Standard Offset T-Arm w/Johnny Joints	\$714.99 pr

- Lighter Weight
- Greaseable Johnny Joints w/Poly Bushing
- Greatly Reduces Pivot Friction
- Minimum Alignment Deflection
- Offset Arm Allows for Larger Rear Tire
- Gloss Black Powder Coat



Recommended for all track cars.

T-arm is offset 2 inches. By running an offset trailing arm, it will allow you to run a wider tire on a stock rim or run a wider aftermarket rim and tire. T-Arms come powder coated gloss black and come with poly bushings. All arms are made in America. They are 1/4" thick, c-channel, laser cut and jig welded.

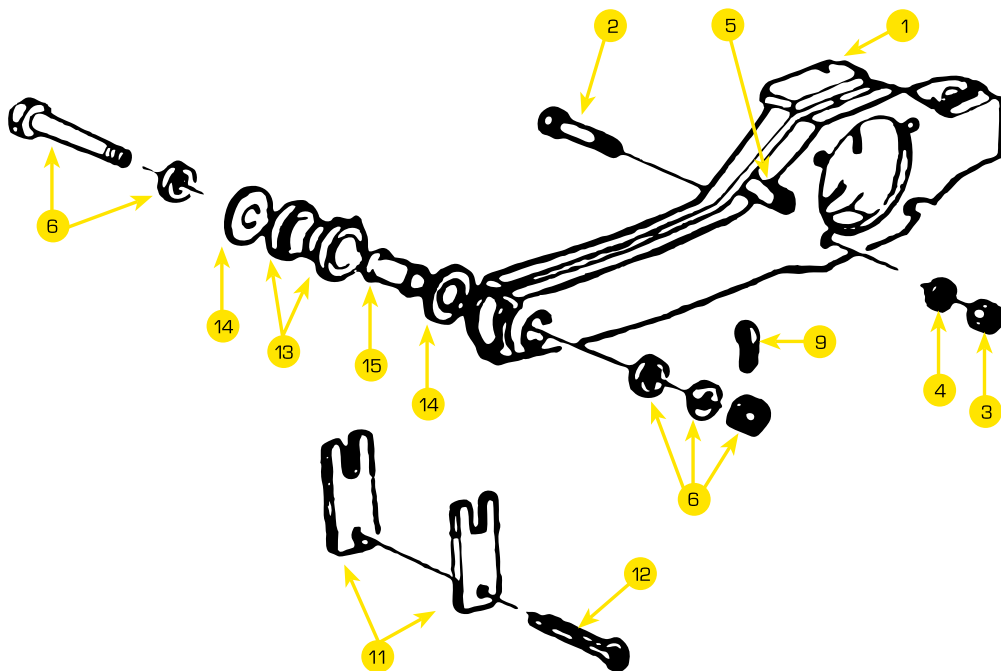
Johnny Joints® offer 30 degrees of unrestricted movement in any direction and eliminates trailing arm bushing bind.

WARNING: If you are using Van Steel offset trailing arms for any other use besides the intended design for a steel leaf spring or composite spring, this WILL void any warranty.



TRAILING ARMS

63-96



1963-82 Trailing Arm

Prt No.	Ilus No.	No. Car	Year	Description	Price
TA-01	1	1	63-64	Drum Brake T-Arm – LH	\$239.99
TA-02	1	1	63-64	Drum Brake T-Arm – RH	\$239.99
TA-03	1	1	65-82	Disc Brake T-Arm – LH	\$239.99
TA-04	1	1	65-82	Disc Brake T-Arm – RH	\$239.99
TA-06	–	1	63-82	Offset T-Arms (pair)	\$499.99
TA-06D	–	1	65-82	Double Offset T-Arms (pair)	\$529.99
TA-06J	–	1	65-82	Offset T-Arms w/Johnny Joints	\$714.99
TA-08K	2	2	65-82	T-Arm Stud Kit (per side)	\$6.99
TA-09	5	2	65-82	Parking Brake Cable Guide	\$1.99
SG-08	–	4	63-82	Spring Bolt Cushion Retainer	\$2.99
TA-16S	11	16	63-82	SS T-Arm Alignment Shim Kit	\$47.99
TA-17	12	2	63-82	T-Arm Alignment Shim Cotter Pin	\$1.99
TA-18PK	13	2	63-82	Poly T-Arm Bushing Kit (pair)	\$69.99
TA-18JRK	–	2	63-82	Johnny Joint Rebuild Kit (per side)	\$19.99
TA-18-O	–	2	63-82	Kurtco Delrin Offset T-Arm Bushings	\$49.99
TA-21	13	2	63-82	Rubber T-Arm Bushing Kit (per side)	\$21.99
TA-22	6	2	63-82	T-Arm Bolt Kit (per side)	\$10.99
TA-23S	6	1	63-82	T-Arm Bolt & Stainless Steel Shim Kit (both sides)	\$61.99

1984-96 Trailing Arm

Prt No.	Ilus No.	No. Car	Year	Description	Price
TA-206H	–	1	84-96	Adjustable T-Arms w/Heim Joints	\$509.99
TA-206PK	–	1	84-96	Adjustable T-Arms w/Forged Ends – Poly	\$399.99
TA-207	–	1	84-96	T-Arm Bushings – Poly	\$69.99

TA-08K



TA-16S



Close-up of Johnny Joints



TA-06-J



Trailing Arm Rebuild Kits

Prt No.	Year	Description	Price
TARK-6574L	65-74	Left Hand T-Arm Rebuild Kit	\$184.99
TARK-6574R	65-74	Right Hand T-Arm Rebuild Kit	\$184.99
TARK-6574C	65-74	LH & RH T-Arm Rebuild Kits	\$351.99
TARK-6574L-P	65-74	Left Hand T-Arm Rebuild Kit - Poly	\$199.99
TARK-6574R-P	65-74	Right Hand T-Arm Rebuild Kit - Poly	\$199.99
TARK-6574PC	65-74	LH & RH T-Arm Rebuild Kits - Poly	\$379.99
TARK-7582L	75-82	Left Hand T-Arm Rebuild Kit	\$184.99
TARK-7582R	75-82	Right Hand T-Arm Rebuild Kit	\$184.99
TARK-7582C	75-82	LH & RH T-Arm Rebuild Kits	\$379.99
TARK-7582L-P	75-82	Left Hand T-Arm Rebuild Kit - Poly	\$184.99
TARK-7582R-P	75-82	Right Hand T-Arm Rebuild Kit - Poly	\$184.99
TARK-7582PC	75-82	LH & RH T-Arm Rebuild Kits - Poly	\$379.99

- Gold/Silver Backing Plate
- Parking Brake Hardware
- Parking Brake Shoes
- 4 - Trailing Arm Mounting Studs w/ Lock Washers and Nuts
- 5 - Lug Studs
- Inner and Outer Timken Bearings
- Inner and Outer National Seals
- Bearing Spacer and Shim Kit
- Trailing Arm Cable Guide
- Guide Plate



- 2 - French Locks
- 4 - 7/16-20 Bolts for the Half Shaft Flange to Spindle Flange
- Bearing Support Dust Shield
- Rubber Trailing Arm Bushings w/ Sleeve and Washers
- Spindle Nut
- Spindle Nut Washer
- Spindle Nut Cotter Pin

DISC BRAKE CONVERSIONS

63-64

63-64 Front Disk Brake Conversion

Prt No.	Description	Price
BCKF-6364	Front Disc Brake Conversion Kit	\$1299.99

New Bearings, Seals, Races, Backing Plates, New Rotors, O-Ring Calipers, Reconditioned Spindles, Caliper Brackets, Tie Rod Supports, New Rubber Hoses and Brake Pads.

No core charge required, Built to Order, allow 1-2 weeks.



63-64 Rear Disk Brake Conversion

Prt No.	Description	Price
BCKR6364	Rear Disc Brake Conversion Kit	\$2299.99
PB-63-CL	1963 Left Parking Brake Cable for Disc Conversion	\$149.99
PB-63-CR	1963 Right Parking Brake Cable for Disc Conversion	\$149.99
PBC-01	64-66 Parking Brake Rebuild Kit	\$449.99

Rebuilt Bearing Assembly (Bearing, Races & Seals), New Spindle, Caliper Mounting Bracket, New Stainless Steel Hardware Kit, New GM Style Shoes, New Backing Plates, New Rotors and T-Arms, O-Ring Calipers, Brake Pads & Hoses.

No core charge required

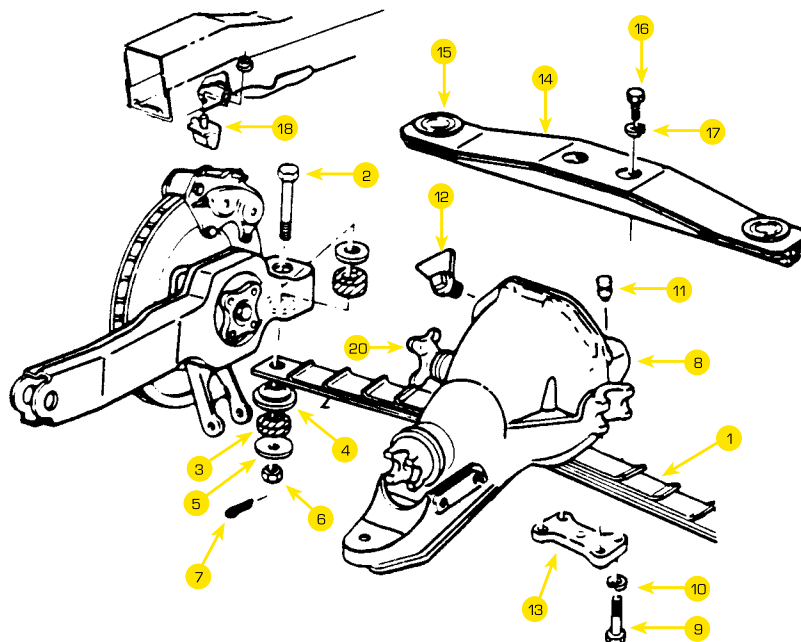
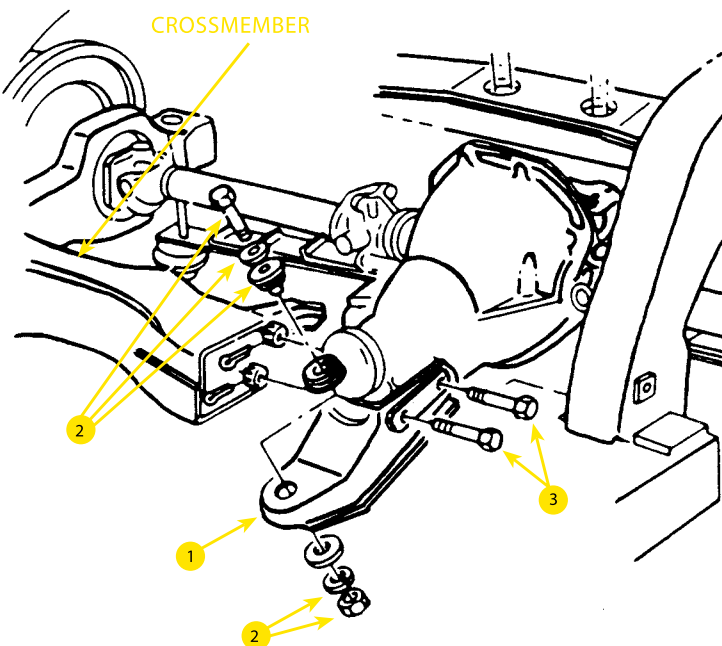




REAR SPRING

63-82 parts listing

CROSSMEMBER



FC-09P



SG-08



SG-24K

1963-82 Front Carrier Mount

Prt No.	Ilus No.	No. Car	Year	Description	Price
FC-03	1	1	63-64	Diff Carrier Mounting Bracket	CALL
FC-04	1	1	65-68	Diff Carrier Mounting Bracket	CALL
FC-05	1	1	69-79	Diff Carrier Mounting Bracket	CALL
FC-09R	2	1	63-82	Rubber Pinion Bushing	\$29.99
FC-09P	2	1	63-82	Poly Pinion Bushing	\$27.99
FC-10	3	1	63-64	Diff Bracket Bolt Kit	\$11.99
FC-11	3	1	65-68	Diff Bracket Bolt Kit	\$14.99
FC-12	3	1	69-79	Diff Bracket Bolt Kit	\$14.99

1963-82 Rear Spring

Prt No.	Ilus No.	No. Car	Year	Description	Price
SG-01	1	1	63-77	9 Leaf Rear Spring - 190lb	\$256.99
SG-01L	1	5-7	63-77	Spring Liner	\$8.99
SG-02	1	1	63-77	7 Leaf Rear Spring - 290lb	\$2.99
SG-04	1	1	78-79	9 Leaf Rear Spring	\$409.99
SG-06	2	2	63-82	6" Spring Bolt, Nut & Cotter Pin	\$11.99
SG-06L8	2	1	63-82	8" Spring Bolts w/Nut (pair)	\$19.99
SG-07	3	4	63-82	Rubber Spring Bolt Cushion	\$2.99
SG-07P	3	1	63-82	Poly Spring Bolt Cushions (car set)	\$22.99
SG-08	4	4	63-82	Spring Cushion Retainer	\$2.99
SG-09	5	4	63-82	Spring Cushion Washer	\$2.99

SG-36R



SG-47

SG-53



SG-12



SG-32

1963-82 Rear Spring Cont...

Prt No.	Ilus No.	No. Car	Year	Description	Price
SG-11P6K	2-7	1	63-82	6" Spring Bolt Kit w/Poly	\$35.99
SG-11R6K	2-7	1	63-82	6" Spring Bolt Kit w/Rubber	\$35.99
SG-11P8K	2-7	1	63-82	8" Spring Bolt Kit w/Poly	\$39.99
SG-12	8	1	63-77	HD Differential Cover	\$199.99
SG-13	8	1	78-79	HD Differential Cover	\$199.99
SG-15	-	1	63-79	Differential Cover Gasket	\$5.99
SG-17K	9	1	63-77	Spring Plate Bolt Kit	\$9.99
SG-18K	9	1	78-79	Spring Plate Bolt Kit	\$9.99
SG-19K	9	1	80-82	Spring Plate Bolt Kit	\$9.99
SG-20	11	1	63-82	Vent Tube	\$3.99
SG-21	12	1	68-64	Differential Fill Plug	\$14.99
SG-24K	13	1	63-77	Rear Spring Plate w/Bolts	\$31.99
SG-25K	13	1	78-79	Rear Spring Plate w/Bolts	\$31.99
SG-26K	13	1	80-82	Rear Spring Plate w/Bolts	\$41.99
SG-28	14	1	63-79	Cross Member	\$499.99
SG-29K	15	1	63-79	Diff Cross Member Bushings (pair)	\$133.99
SG-30K	16	1	63-79	Diff Cross Member to Cover/Cover Bolt kit	\$5.99
SG-31	18	2	66-75	Rear Bump Stop	\$12.99
SG-31E	18	2	63-64	Rear Bump Stop	\$36.99
SG-32	18	2	76-82	Rear Bump Stop	\$18.99
SG-34-HD	-	2	63-82	Lucas Diff Fluid	\$13.99
SG-35	-	-	63-82	GM Posi Additive	\$15.99
SG-36	20	2	63-79	Rebuilt Side Yoke - Cap Style	\$119.99
SG-36R	20	2	63-79	Rebuilt Side Yoke - U-Bolt Style	\$119.99
SG-37	20	2	63-79	New Side Yokes - Cap Style	\$134.99
SG-37R	20	2	63-79	New Side Yokes - U-Bolt Style	\$134.99
SG-39PY-1310	-	1	63-69	1310 Pinion Flange w/U-Bolts - 30 Spline	\$143.99
SG-39PY-1330	-	1	63-69	1330 Pinion Flange w/U-Bolts - 30 Spline	\$143.99
SG-39PY-1350	-	1	63-69	1350 Pinion Flange w/U-Bolts - 30 Spline	\$189.99
SG-47	-	1	63-79	Diff Cross Member Reinforcement Kit	\$40.99
SG-53	-	1	63-79	Delrin Cross Member/Pinion Bushings Only	\$209.99
SG-54	-	1	63-79	Delrin Cross Member Reinforcement Kit	\$249.99
SG-80	-	1	80-82	Rear Crossmember Poly Bushings	\$30.99
DK-01	-	1	63-79	Diff Rebuild Kit w/Timken Bearings & Cover Gasket w/o pinion seal	\$159.99
DK-01-PS	-	1	63-79	SKF Pinion Seal	\$13.99
DK-01-YB	-	2	63-79	Differential Side Yoke Bearing	\$18.99
DK-01-YS	-	2	63-79	Differential Side Yoke Seal	\$8.99
DK-02	-	1	80-82	Timken Diff Rebuild Kit w/o Yoke Bearings/Seals	\$149.99
DK-02-YB	-	2	80-82	Differential Side Yoke Bearing	\$20.99
DK-02-YS	-	2	80-82	Differential Side Yoke Seal	\$18.99
DK-08	-	1	63-77	Tow Hook Spring Mount Plate	SEE WEB
DK-09	-	1	78-79	Tow Hook Spring Mount Plate	SEE WEB
DK-10	-	1	80-82	Tow Hook Spring Mount Plate	SEE WEB

DK-09



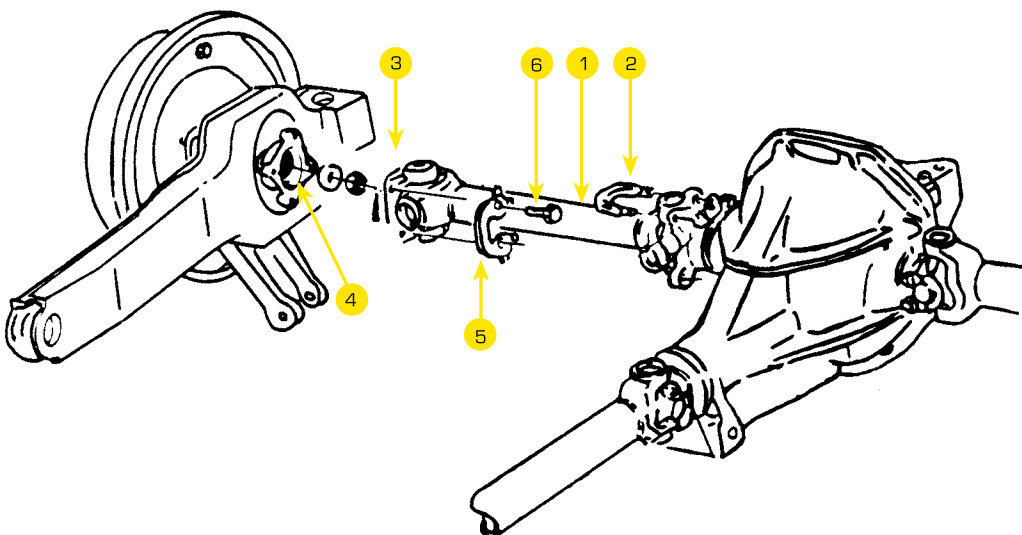
Coming
Soon





HALF SHAFTS

63-96



HS-18



HS-07
w/o grease
fitting

1963-82

Prt No.	Ilus No.	No. Car	Year	Description	Price
HS-06	—	4	63-79	Half Shaft U-Joint w/Grease Fitting (1350)	\$29.99
HS-07	—	4	63-79	Half Shaft U-Joint w/out Grease Fitting (1350)	\$26.99
DS-790S	—	4	80-82	Half Shaft/Drive Shaft U-Joint – Solid Spicer (1330)	\$28.99
HS-09	2	4	63-79	Half Shaft U-Bolt	\$8.99
HS-10	3	2	63-79	Half Shaft Flange	\$51.99
HS-11	4	2	63-79	New Spindle Flange	\$84.99
HS-12	4	2	80-81	New Spindle Flange – Auto	\$99.99
HS-13	4	2	80-82	New Spindle Flange – 4 Spd – All 82	\$99.99
HS-14	—	2	63-82	Spindle Flange Shield	\$5.99
HS-15	5	4	63-79	63-79 – French Locks (4 pack)	\$7.99
RB-31	6	8	65-82	Half Shaft Flange to Spindle Flange Bolt	\$1.99
RB-31K	6	8	65-82	Half Shaft Flange to Spindle Flange Bolt Kit (8 pcs)	\$10.99
HS-18	—	4	63-79	Solid Spicer Half Shaft U-Joint	\$34.99
HS-19	2	8	80-81	Auto U-Joint Strap w/Bolts	\$13.99
HS-20	2	8	80-82	Manual U-Joint Strap w/Bolts	\$13.99
HS-23	2	1	63-79	HD Cap & Bolt Kit	\$79.99
HS-25	—	4	63-79	Driveshaft U-Joint U-Bolts (pr)	\$8.99
HS-26	—	4	80-82	Driveshaft U-Joint Strap w/Bolts	\$8.99
HS-28K	—	1	80-81	HD Cap & Bolt Kit - Auto	\$189.99
HS-29K	—	1	80-82	HD Cap & Bolt Kit - 4 spd, ALL 82	\$179.99



HS-12



HS-15



HS-26



HS-23



HS-09

HS-24LS



1963-96 Rebuilt Half Shaft Kits

Prt No.	Year	Description	Price
HS-24E	63-74	Half Shaft Rebuild – House U-Joints	\$129.99
HS-24ES	63-74	Half Shaft Rebuild – Spicer U-Joints	\$141.99
HS-24L	75-79	Half Shaft Rebuild – House U-Joints	\$129.99
HS-24LS	75-79	Half Shaft Rebuild – Spicer U-Joints	\$141.99
HS-81E	80-81 Auto	Half Shaft Rebuild – House U-Joints	\$95.99
HS-81S	80-81 Auto	Half Shaft Rebuild – Spicer U-Joints	\$119.99
HS-82E	80-81 4sp ALL 82	Half Shaft Rebuild – House U-Joints	\$88.99
HS-82S	80-81 4sp ALL 82	Half Shaft Rebuild – Spicer U-Joints	\$98.99
HS-8496	84-96	Half Shaft Rebuild – House U-Joints	\$88.99
HS-8496S	84-96	Half Shaft Rebuild – Spicer U-Joints	\$98.99

House brand U-Joints are either AC Delco or Neapco U-Joints

HS-02C



1963-82 New Half Shaft Kits

Prt No.	Year	Description	Price
HS-01	63-74	Half Shaft w/Spicer U-Joints	\$249.99
HS-01E	63-74	Half Shaft w/House U-Joints	\$199.99
HS-01P	63-74	Half Shaft w/Spicer U-Joints (pair)	\$429.99
HS-01PE	63-74	Half Shaft w/House U-Joints (pair)	\$379.99
HS-02	75-79	Half Shaft w/Spicer U-Joints	\$249.99
HS-02E	75-79	Half Shaft w/House U-Joints	\$199.99
HS-02P	75-79	Half Shaft w/Spicer U-Joints (pair)	\$429.99
HS-02PE	75-79	Half Shaft w/House U-Joints (pair)	\$379.99
HS-02C	63-79	Half Shaft w/Spicer U-Joints - Chromoly Tubing - each	\$399.99
HS-03	80-81 Auto	Half Shaft w/Spicer U-Joints	\$199.99
HS-03E	80-81 Auto	Half Shaft w/House U-Joints	\$167.99
HS-03P	80-81 Auto	Half Shaft w/Spicer U-Joints (pair)	\$429.99
HS-03PE	80-81 Auto	Half Shaft w/House U-Joints (pair)	\$379.99
HS-04	80-81 4sp ALL 82	Half Shaft w/Spicer U-Joints	\$199.99
HS-04E	80-81 4sp ALL 82	Half Shaft w/House U-Joints	\$167.99
HS-04P	80-81 4sp ALL 82	Half Shaft w/Spicer U-Joints (pair)	\$399.99
HS-04PE	80-81 4sp ALL 82	Half Shaft w/House U-Joints (pair)	\$379.99

House brand U-Joints are either AC Delco or Neapco U-Joints

All HS-02 Part Numbers will work on the 63-74 cars

HS-01E



HS-25





DIFFERENTIALS

63-96

1963-96 Heavy Duty Side Yoke Kit



Prt No.	Year	Description	Price
HS-23	63-79	Side Yoke Kit	\$79.99
HS-28K	80-81	Auto Side Yoke Kit	\$189.99
HS-29K	80-82	Manual and ALL 82 Side Yoke Kit	\$179.99
HS-230K	84-96	Side Yoke Kit	\$189.99

HSHP-040



1963-79 Differential Rebuilds, Gears and Spline Axles

Prt No.	Year	Description	Price
REAR6579	63-79	Differential Rebuild	\$749.99
REAR6579R	63-79	Race Differential Rebuild - 30 spline	\$1999.99
GS-308	63-79	3:08 US Gear Ring & Pinion	\$379.99
GS-336	63-79	3:36 US Gear Ring & Pinion	\$379.99
GS-355	63-79	3:55 US Gear Ring & Pinion	\$379.99
GS-373	63-79	3:73 US Gear Ring & Pinion	\$379.99
GS-411T	63-79	Thick 4:11 US Gear Ring & Pinion	\$379.99
GS-390	63-79	3:90 Ring & Pinion	\$479.99
HSHP-03-1350	63-79	1350 Kit Plus Your Differential and T-Arms Rebuilt - 30 Spline	\$5299.99
HSHP-04	63-79	1350 Series 30 Spline Kit (kit only)	\$2343.99
HSHP-04C	63-79	1350 Kit Plus Your Differential and T-Arms Rebuilt	\$3499.99
HSHP-04I	63-79	1350 30 Spline Inner Axles w/Flanges	\$529.99
HSHP-04O	63-79	1350 30 Spline Outer Axles w/Flanges - 7/16" or 1/2" studs	\$1799.99
HSHP-05	63-79	17 Spline Inner Axles w/Flanges	\$529.99
HSHP-08	63-79	12 Bolt 1480 HD Inner & Outer Axle Kit	\$3199.99
HSHP-09	63-79	12 Bolt 1480 Inner Axles Only	\$529.99
SPG-01	63-79	30 Spline Spider Gears	\$309.99

1963-79 12 Bolt Differentials and Parts

Prt No.	Description	Price
12 Bolt-373	12 Bolt Diff Built w/3:73 Gears	\$4699.99
12 Bolt-411	12 Bolt Diff Built w/4:11 Gears	\$4699.99
12 Bolt-1A	12 Bolt Inner Axles and Drive Flanges	\$732.99
12 Bolt-CK	12 Bolt Conversion Kit	\$2449.99
12 Bolt C-Clip	12 Bolt C-Clips	\$6.99

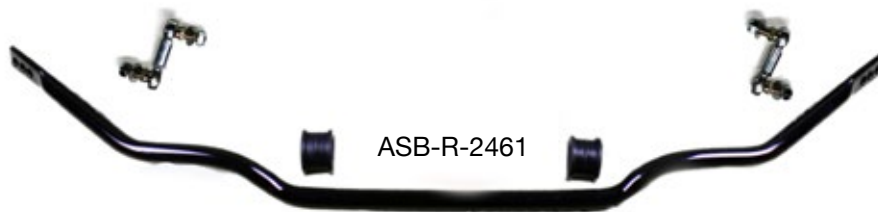
1980-82 Cast Iron Differential Conversion

Prt No.	Description	Price
8082-CONV-1350	Cast Iron Differential Conversion	\$4149.99
8082-CONV-1350C	Cast Iron Differential Conversion w/Offsets	\$5799.99
8082-CONV-1480C	Cast Iron Differential Conversion w/Offsets	\$6599.99



SWAY BAR

kits, bushings, end links



Sway Bars for street/strip or all out racing. Give us a call if you need help in determining the best bar setup for your needs.

1963-82 Sway Bars

Prt No.	Year	Description	Price
ASB-F-856	63-82	1" Solid Front Sway Bar Kit	\$189.99
ASB-F-760	63-82	1-1/8" Solid Front Sway Bar	\$189.99
ASB-F-761	63-82	1-1/4" Solid Front Sway Bar Kit	\$189.99
ASB-F-2266	63-82	1-3/8" Tubular Front Sway Bar Kit	\$299.99
ASB-F-5190	63-82	1-1/8" Solid - 2 Hole Adjustable - For VS/JRi Lower A-Arms	\$299.99
ASB-F-5680	63-82	1-3/8" Tubular - 2 Hole Adjustable - For VS/JRi Lower A-Arms	\$299.99
ASB-R-347	63-82	5/8" Solid Rear Sway Bar kit	\$149.99
ASB-R-347-OSK	63-79	5/8" Solid Off Set Rear Sway Kit	\$249.99
ASB-R-913	63-82	3/4" Solid Rear Sway Bar Kit	\$149.99
ASB-R-907	63-82	7/8" Solid Rear Sway Bar Kit	\$149.99

1985-96 Sway Bars

Prt No.	Year	Description	Price
ASB-F-2168	85-87	Front Anti-Sway Bar Kit - 32mm	\$256.99
ASB-F-2170	88-96	Front Tubular Sway Bar - 32MM/1-1/4"	\$256.99
ASB-F-2473	88-96	35MM/1-3/8" Front Tubular 2 Hole Adjustable Bar	\$399.99
ASB-R-2175	84-96	Rear Tubular Sway Bar 25.4MM/1"	\$230.99
ASB-R-2175.2	84-96	25.4MM/1" Rear Tubular 2 Hole Adjustable Bar	\$299.99

1997-13 Sway Bars

Exclusive Van Steel Design

Prt No.	Year	Description	Price
ASB-F-4620	97-13	Front Adjustable Tubular Sway Bar - 35mm - 2 Hole	\$429.99
ASB-R-2461	97-13	Rear Adjustable Tubular Sway Bar - 25.4mm - 3 hole	\$399.99

20014-19 Sway Bars

Exclusive Van Steel Design

Prt No.	Year	Description	Price
ASB-F-5181	14-19	Front Adjustable Tubular Sway Bar - 35mm - 2 Hole - Delrin Bushings	\$469.99
ASB-R-5182	14-19	Rear Adjustable Tubular Sway Bar - 25.4mm - 3 hole - Delrin Bushings	\$429.99





SWAY BAR

bushings & parts

Prt No.	Year	Description	Price
ASB-B-1	63-82	Poly Mounting Bushings - 1"	\$19.99
ASB-B-1-1/4	63-82	Poly Mounting Bushings - 1-1/4"	\$19.99
ASB-B-1-1/8	63-82	Poly Mounting Bushings - 1-1/8"	\$19.99
ASB-B-15/16	63-82	Poly Mounting Bushings - 15/16"	\$19.99
ASB-B-3/4	63-82	Poly Mounting Bushings - 3/4"	\$19.99
ASB-B-5/8	63-82	Poly Mounting Bushings - 5/8"	\$19.99
ASB-B-7/8	63-82	Poly Mounting Bushings - 7/8"	\$19.99
ASB-B-9/16	63-82	Poly Mounting Bushings - 9/16"	\$19.99

Prt No.	Year	Description	Price
ASB-B-32MMF	84-87	Front Sway Bar Bushings w/End Links - 32MM	\$26.99
ASB-B-32MMFL	84-96	Front Sway Bar Bushings w/End Links - 32MM	\$37.99
ASB-C4-HEIM	88-96	Front Heim Joint End Links - poly lower	\$169.99
ASB-C4-HEIMa	88-96	Front Heim Joint End Links - aluminum lower	\$169.99
ASB-C4R-HEIM	84-96	Rear Heim Joint End Links	\$94.99

1984-96 Sway Bar Racing Heim Joint End Link Kit

#ASB-C4-HEIM



Prt No.	Year	Description	Price
ASB-B-C5/6-32MMF	97-12	Front Frame Mount Bushings - 32MM	\$16.99
ASB-B-C5/6-35MMF	97-12	Front Frame Mount Bushings - 35MM	\$16.99
ASB-B-C5/6-25.4MMR	97-12	Rear Frame Mount Bushings - 25.4MM	\$16.99
ASB-C5/6-Heim	97-13	Street Heim Joint End Links	\$79.99
ASB-C5/6R-Heim	97-13	Racing Heim Joint End Links	\$139.99
ASB-C5/6RS	97-13	Racing Heim Joint End Links/Stud Style	\$149.99

1997-13 Sway Bar Racing Heim Joint End Link Kit

#ASB-C5/6R-Heim



1997-13 Sway Bar Racing Heim Joint End Link Kit/ Stud Style

#ASB-C5/6RS



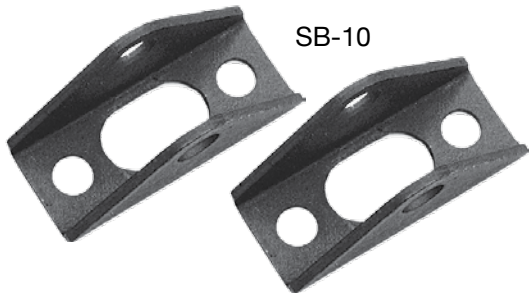
SB-07



SB-09



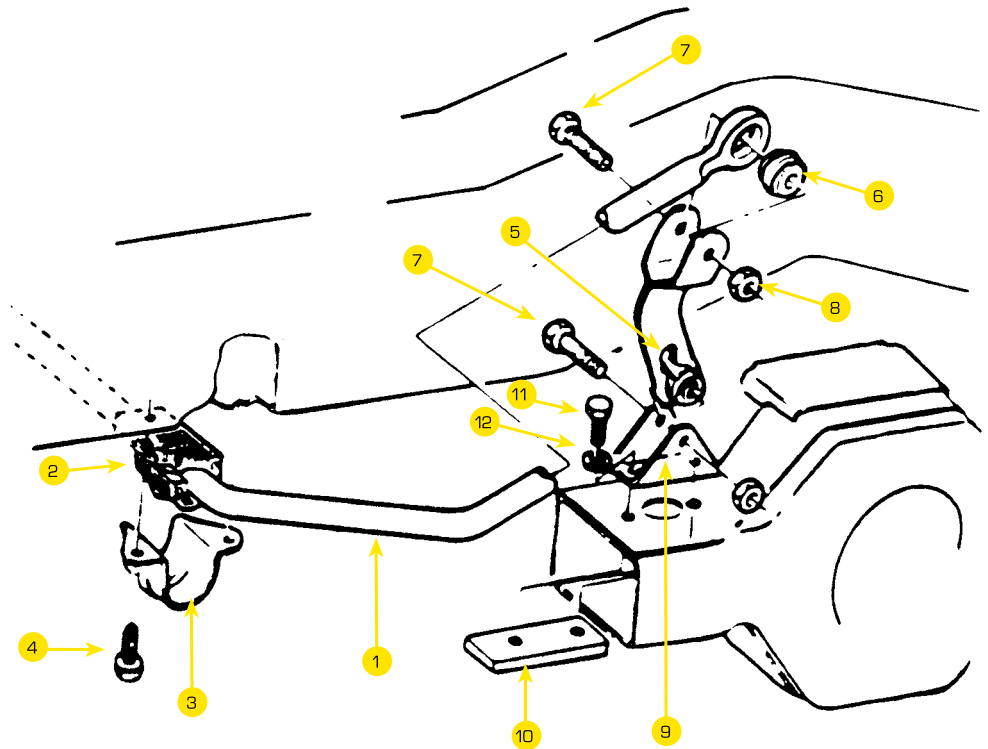
SB-10



SB-11



SB-12



1963-82 Rear OE Anti-Sway Bar Parts

Prt No.	Ilus No.	No. Car	Year	Description	Price
SB-06	4	1	65-82	Front/Rear Sway Bar Frame Mount Bolt Kit	\$2.99
SB-07	5	2	65-82	Rear Sway Bar End Link	\$17.99
SB-08	6	1	65-82	Rear Sway Bar Bushing – Rubber	\$9.99
SB-08P	6	1	65-82	Rear Sway Bar Bushings – Poly (car set)	\$15.99
SB-09	7	2	66-82	Sway Bar End Link Bolt Kit	\$3.99
SB-10	9	2	66-82	Sway Bar End Link Bracket on T-Arm	\$8.99
SB-11	10	2	66-82	2-Hole Plate for End Link Bracket	\$8.99
SB-12	11	1	66-82	2-Hole Plate Bolts (4)	\$1.99

SB-08



SB-08P





WILWOOD BRAKES

65-present



Forged Narrow Superlite 6R Big Brake Front Brake Kit:

The unsurpassed braking capacity of the Forged Narrow Superlite 6R six-piston caliper serves as the base of this group of 13"-14" big rotor kits for 1965-2017 Corvettes. FNSL6R kits are engineered application specific for simplified installation and full compatibility with OE master cylinder output and ABS functions where used. Big brake kits provide increased brake capacity and complimentary style with wheel, tire, and suspension upgrades on show cars and high performance street/track machines. Optional caliper finishes and rotor designs simplify personalizing the style and braking requirements of any application.

Forged Narrow Superlite 4R Big Brake Rear Brake Kit For OE Parking Brake:

Forged Narrow Superlite 4R four piston calipers are combined with BP-10 compound pads and 13"-14" rotors in this group of big brake kits for custom high performance street and show machines. This group of specialized kits for Corvette retains full use of the OE parking brake, master cylinder output, and ABS where used. FNSL4R rear kits provide complimentary style and performance with 13" and larger front brake upgrades in conjunction with wheel, tire, and suspension upgrades. Optional caliper finishes and rotor designs enable the builder to match style and performance on all applications.

BKW-140-11857



BKW-140-14883



Popular Wilwood Kits

Visit our website or call for additional kits and pricing

Prt No.	Year	Location	Description
BKW-140-11857	65-82	Front	D8 6 Piston Caliper Kit Dark Grey Hard Anodized - Includes Pads & Lines
BKW-140-10789	65-82	Front	D8 4 Piston Caliper Kit - Dark Grey Hard Anodized- Includes Pads & Lines
BKW-140-10790	65-82	Rear	D8 4 Piston Caliper Kit - Dark Grey Hard Anodized - Includes Pads & Lines
BKW-140-11918	85-87	Front	Black SL6R 2 Piece 13" - Slotted
BKW-140-11920	85-87	Rear	Black SL4R 13" 2 Piece - Slotted
BKW-140-8337	88-96	Front	Black SL6R Calipers 13" 2 Piece Rotors - Slotted
BKW-140-14883	88-96	Rear	SL4R 2 Piece 13" Slotted w/Parking Brake
BKW-330-14891	88-96	Rear	Parking Brake Cable Kit
BKW-140-8230	97-04	Front	Black SL6R Caliper 14" 2 Piece Rotor - Slotted
BKW-140-9119	97-04	Rear	Black SL4R Caliper 14" 2 Piece Rotor - Slotted
BKW-140-8922	05-13	Front	Black SL6R Caliper 14" 2 Piece Rotor - Slotted
BKW-140-9119	05-13	Rear	Black SL4R Caliper 14" 2 Piece Rotor - Slotted
BKW-140-13697	14-19	Front	Aerolite 6 Piston Calipers 14" 2 Piece Slotted Rotors - Black
BKW-140-13698	14-19	Rear	Wilwood Aerolite 6 Piston Calipers 14" 2 Piece Slotted Rotors - Black



Street

BP-10

- Standard pad with most Wilwood brake kits
- Low dust
- Improved stopping over OE
- Rotor friendly/extended pad life
- Heat range: Medium
- Wear rate: Medium

BP-20

- Upgrade from BP-10
- High performance street
- Fast response without high rotor abrasion
- Rotor friendly/extended pad life
- Heat range: Medium
- Wear rate: Medium

ProMatrix

- Dual sport performance street and track compound
- Quite and low dust
- Unique compound to combine clean, quite & fade resistant
- Some options for stock calipers
- Heat range: High
- Wear rate: Variable

Motorsport

BP-30

- Improved friction formula for track duty on 200tw tires
- Peds quickly, low rotor abrasion
- HPDE to intermediate track duty
- Heat range: High
- Cold torque: Medium
- Hot torque: High
- Wear rate: Medium-Low

Polymatrix H

- Smooth initial engagement
- Severe duty for road courses with racing slicks
- Predictable response, excellent modulation at all temps
- Long wear rate in sustained high heat
- Heat range: X-high
- Cold torque: high
- Hot torque: X-high
- Wear rate: Low

BP-40

- Predictable & linear response with excellent modulation
- Long wear rates
- Very high heat fade resistance
- For extreme duty track, racing slicks
- Heat range: X-high
- Cold torque: X-high
- Hot torque: X-high
- Wear rate: Low

Polymatrix A

- Immediate cold response
- Severe duty for road courses, racing slicks w/downforce
- Long wear for sustained high heat braking
- Heat range: X-high
- Cold torque: X-high
- Hot torque: X-high
- Wear rate: Low

Thermlock® Pistons: Wilwood's exclusive Thermlock® Pistons provide the most effective thermal barrier available for minimizing heat transfer from the brake pads to the caliper body, seals, and fluid. This innovative multi-part design incorporates a stainless steel shield and coated aluminium shell configuration that effectively retards heat transfer by 25% and more. Lower operating temperatures translate to the elimination of seal crystallization, the elimination of localized fluid boiling, and longer service life through decreased distortion in the caliper body and piston bores.



Call for Pricing to Add Thermlock Pistons



HAWK BRAKE PADS

65 - present

Choosing Pads: Hawk Brake pads are top quality pads that will help peek your brakes performance. Certain pads will help you in different applications so be sure you read this fully.

Feel free to call with your questions on pad options.



Street

Ceramic - Z

- Extremely quite
- Ultra-low dust
- Improved stopping over OE
- Rotor friendly/extended pad life
- Great for show cars
- Optimal range: 100-450 F
- Min/Max range: 100-650 F

HPS - F

- Quite & smooth braking feel
- Excellent for spirited driving, light autocross & drag race
- Rotor friendly/extended pad life
- Consistent brake release
- Increased stopping power
- Mild brake dust
- Optimal range: 100-500 F
- Min/Max range: 100-700 F

Motorsport

HP+ - N

- Low to mid temp range
- Fade resistant
- Smooth & predictable torque
- Ideal for Autocross/Light HPDE
- Aggressive for street
- Heavy dust/cold squeal
- Optimal range: 300-600 F
- Min/Max range: 100-800 F

Blue 9012 - E

- Intermediate initial bite
- Low to mid temp range
- Medium torque
- Moderate HPDE and/or aggressive autocross
- Entry level race on 200tw tires
- Most popular SCCA pad
- Optimal range: 350-800 F
- Min/Max range: 250-1000 F

HT10 - S

- Good static & dynamic coefficient
- Excellent modulation
- High torque
- Very good initial response
- For cars with more tire grip, DOT slicks
- Optimal range: 500-1100 F
- Min/Max range: 300-1300 F

DTC-60 - G

- Superior release & torque
- Low abrasive rotor wear
- Popular for lightweight cars
- Wheel to wheel, longer sprint racing, race tires
- For high deceleration and mild downforce
- Matches well with DTC-70 in front
- Optimal range: 700-1100 F
- Min/Max range: 400-1600 F

DTC-70 - U

- High performance torque compound
- Superior rotor & pad wear
- Excellent modulation and release
- Road racing, extended sprint racing, wanting longer pad life
- For high deceleration and high downforce
- Can use DTC-60 in rear
- Optimal range: 800-1200 F
- Min/Max range: 400-1600 F

Our most popular pads typically in stock.

Visit our website or call for additional pads and pricing

Pads Starting at

\$67.99*

Prt No.	Year	Location	Description
HB126F.505	65-82	Front/Rear	Hawk HPS Brake Pads -
HB128E.505	65-82	Front/Rear	Hawk Dual Pin 9012 Blue Racing Pads
HB173F.570	84-87	Front	Hawk HPS Brake Pads
HB173N.570	84-87	Front	Hawk HP Plus Brake Pads
HB111F.610	88-96	Front	Hawk HPS Brake Pads
HB111N.610	88-96	Front	Hawk HP Plus Brake Pads
HB112F.540	84-96	Rear	Hawk HPS Brake Pads
HB112N.540	84-96	Rear	84-96 Hawk HP Plus Brake Pads
HB247F.575	97-13	Front	Hawk HPS Brake Pads
HB247N.575	97-13	Front	Hawk HP Plus Brake Pads
HB248F.650	97-13	Rear	Hawk HPS Brake Pads
HB248G.650	97-13	Rear	Hawk DTC60 Racing Brake Pads
HB248N.650	97-13	Rear	Hawk HP Plus Brake Pads

Prt No.	Year	Location	Description
HB531N.570	06-13	Front	Hawk HP Plus Brake Pads (Pucks)
HB531U.570	06-13	Front	Hawk DTC-70 Brake Pads (Pucks)
HB532G.570	06-13	Rear	Hawk DTC60 Race Brake Pads (Pucks)
HB532N.570	06-13	Rear	Hawk HP Plus Brake Pads (Pucks)
HB532U.570	06-13	Rear	Hawk DTC70 Race Brake Pads (Pucks)
HB658F.570	06-13	Front	Hawk HPS Brake Pads (1 Piece Pads)
HB658N.570	06-13	Front	Hawk HP Plus Brake Pads (1 Piece Pads)
HB658U.570	06-13	Front	Hawk DTC 70 Brake Pads (1 Piece Pads)
HB659F.570	06-13	Rear	Hawk HPS Brake Pads (1 Piece Pads)
HB659G.570	06-13	Rear	Hawk DTC60 Brake Pads (1 Piece Pads)
HB659N.570	06-13	Rear	Hawk HP Plus Brake Pads (1 Piece Pads)
HB726U.582	14+	Front	Hawk Front DTC 70 Pads
HB727U592	14+	Rear	Hawk Rear DTC 70 Pads

BRAKES & FUEL

line kits & brake blocks

54-82 Brake Lines

Prt No.	Year	Description	Price
BLS-03	54	Complete Brake Line Set	\$149.99
BLS-04	55	Complete Brake Line Set	\$149.99
BLS-05	56-62	Complete Brake Line Set	\$129.99
BLS-06	63-64	Complete Brake Line Set - Non-Power	\$119.99
BLS-07	63-64	Complete Brake Line Set - Power	\$119.99
BLS-08	65	Early 65 - Complete Brake Line Set - Non-Power 3/16" Dia.	\$119.99
BLS-09	65	Mid to Late 65 - Complete Brake Line Set - Non-Power 1/4" Dia.	\$119.99
BLS-10	65	Early 65 - Complete Brake Line Set - Power 3/16" Dia.	\$129.99
BLS-11	65	Mid to Late 65 - Complete Brake Line Set - Power 1/4" Dia.	\$129.99
BLS-12	66	Complete Brake Line Set - Non-Power	\$129.99
BLS-13	66	Complete Brake Line Set - Power	\$129.99
BLS-14	67	Complete Brake Line Set - Non-Power	\$139.99
BLS-15	67	Complete Brake Line Set - Power	\$139.99
BLS-16	68	Complete Brake Line Set - Non-Power	\$139.99
BLS-17	68	Complete Brake Line Set - Power	\$139.99
BLS-18	69	Complete Brake Line Set - Non-Power	\$139.99
BLS-19	69	Complete Brake Line Set - Power	\$139.99
BLS-20	70-73	Complete Brake Line Set - Non-Power	\$149.99
BLS-21	70-73	Complete Brake Line Set - Power	\$149.99
BLS-22	74	Complete Brake Line Set - Non-Power	\$169.99
BLS-23	74	Complete Brake Line Set - Power	\$169.99
BLS-24	75	Complete Brake Line Set - Non-Power	\$169.99
BLS-25	75-82	Complete Brake Line Set - Power	\$169.99

ADD "S" to part number for Stainless Steel Lines - plus \$30-60

58-82 Brake & Fuel Line Clip Kit

Prt No.	Year	Description	Price
CL1	58-62	Brake & Fuel Line Clip Set	\$27.99
CL2	63-65	Brake & Fuel Line Clip Set	\$29.99
CL3	65L-66	Brake & Fuel Line Clip Set w/1/4" Front to Rear Brake Line	\$18.99
CL4	67	Brake & Fuel Line Clip Set	\$15.99
CL5B	68	Brake & Fuel Line Clip Set - Big Block	\$25.99
CL5S	68	Brake & Fuel Line Clip Set - Small Block	\$25.99
CL6B	69-70	Brake & Fuel Line Clip Set - Big Block	\$24.99
CL6S	69-70	Brake & Fuel Line Clip Set - Small Block	\$24.99
CL7B	70-73	Brake & Fuel Line Clip Set - Base Engines	\$24.99
CL7S	70-72	Brake & Fuel Line Clip Set	\$24.99
CL8	74-82	Brake & Fuel Line Clip Set	\$27.99
BLS-BoltKit	58-82	Brake Line Bolt Kit - 14 Pieces	\$16.99

53-82 Brake Blocks

Prt No.	Year	Description	Price
BLB-01C	53-62	Master Cylinder Brake Block Kit w/Bolt & Washers	\$41.99
BLB-05	56-62	Left Front Brake Line Block	\$24.99
BLB-06	56-62	Right Front Brake Block	\$24.99
BLB-07	53-62	Rear Brake Block on Axle	\$24.99
BLB-8	63-64	Left Front Brake Block - Pwr/Non-Power	\$24.99
BLB-9	65	Left Front Brake Block - Pwr 3/16	\$24.99
BLB-10	65	Non-Power - Left Front Brake Block	\$24.99
BLB-11	65-66	Left Front Block, Non-Power 1/4"	\$24.99
BLB-12	66	Left Front Brake Block - Non-Power	\$24.99
BLB-13	67-68	Left Front Brake Block - Pwr/Non-Power	\$24.99
BLB-14	63-64	Left Rear Brake Block - Pwr/Non-Power	\$24.99
BLB-15	65	Left Rear Brake Block - Power 3/16"	\$24.99
BLB-16	65	Left Rear Brake Block - Non-Power	\$24.99
BLB-17	65	Left Rear Brake Block - Power 1/4"	\$19.99
BLB-18	66-82	Left Rear Brake Block	\$19.99
BLB-19	63-82	Right Rear Brake Block	\$19.99

63-82 Tank to Pump Fuel Lines

Prt No.	Year	Description	Price
F-8	63-67	Small Block Fuel Line - Tank to Pump	\$69.99
F-9	63-67	Big Block Fuel Line - Tank to Pump	\$69.99
F-10	68	Main Fuel Line - Steel	\$74.99
F-11	68	Right Side Fuel Return Line - Steel	\$74.99
F-12	69	Right Side Main Fuel Line Kit - Steel	\$74.99
F-13	69-74	Right Side Fuel Return - 1/4" - Steel	\$74.99
F-13A	75-77	Right Side Fuel Return - 1/4" - Steel	\$74.99
F-14	70-74	Right Side Main Fuel Line - Steel	\$69.99
F-14A	75-77	Main Right Side Fuel Line - Steel	\$69.99
F-15	70-74	Left Side Vapor Return - Steel	\$69.99
F-15A	75-77	Left Side Vapor Return - Steel	\$69.99
F-16	78-82	Right Side Main Fuel Line - Steel	\$79.99
F-17	78-82	Right Side Return Fuel Line - Steel	\$69.99
F-18	78-82	Left Side Vapor Return - Steel	\$79.99

ADD "S" to part number for Stainless Steel Lines - plus \$25-30



BRAKES

calipers, rotors, flex lines



BCK-01

1965-82 OE Brake Caliper Kits

- SS Sleeved Calipers
- Pins
- w/O-ring Pistons
- Fluid
- Pads
- Specify Year & Power or Non-Power Brakes
- Flex Lines

Prt No.	Year	Description	Price
BCK-01	67-82	With Master Cylinder	\$669.99
BCK-01S	67-82	With Master Cylinder, SS Flex Lines	\$709.99
BCK-01N	67-82	With Master Cylinder, New Calipers	\$849.99
BCK-01NS	67-82	With Master Cylinder, New Calipers, SS Flex Lines	\$899.99
BCK-02	65-82	w/o Master Cylinder	\$599.99
BCK-02S	65-82	w/o Master Cylinder, SS Flex Lines	\$639.99
BCK-02N	65-82	w/o Master Cylinder, New Calipers	\$849.99
BCK-02NS	65-82	w/o Master Cylinder, New Calipers, SS Flex Lines	\$889.99



1965-82 Calipers Only

BCK-03.....	\$479.99
Reman	+ \$200 Core
BCK-03N	\$589.99
NEW	No Core Charge



Stainless Steel Flex Line Kits

RB-13	65-82	\$92.99
SBH-8487	84-87	\$126.99
SBH-8893	88-93	\$126.99
SBH-9496	94-96	\$126.99
SBH-9704	97-04	\$139.99
SBH-05	05-13	\$169.99
SBH-C6Z06	06-13	\$169.99

1965-13 Rotor Packages

Prt No.	Year	Description	Price
BRK-01	65-82	OE Rotors (car set)	\$194.99
BRK-01S	65-82	Slotted & Dimpled (car set)	\$459.99
BRK-01SH	65-82	Slotted & Dimpled w/Hawk HPS Pads	\$592.99
BRK-02	65-82	OE Rotors w/Semi-Metallic Pads	\$214.99
BRK-03	84-87	OE Replacement Rotors (car set)	\$203.99
BRK-03S	84-87	Slotted & Drilled (car set)	\$349.99
BRK-03SH	84-87	Slotted & Drilled w/Hawk HPS Pads	\$469.99
BRK-04-12	88-94	12" OE Replacement Rotors (car set)	\$214.99
BRK-04-13	88-96	13" OE Replacement Rotors (car set)	\$269.99
BRK-04S-12	88-94	12" Drilled (car set)	\$324.99
BRK-04S-13	88-96	13" Drilled (car set)	\$405.99
BRK-04SH-12	88-94	12" Drilled w/Hawk HPS Pads	\$489.99
BRK-04SH-13	88-96	13" Drilled w/Hawk HPS Pads	\$564.99
BRK-05	97-04	OE Replacement Rotors	\$224.99
BRK-05S	97-04	Slotted & Drilled (car set)	\$349.99
BRK-05SH	97-04	Slotted & Drilled w/Hawk HPS Pads	\$489.99
BRK-06	05-13	GM OE Replacement Rotors - (JL9)	\$249.99
BRK-06AC	05-13	AC Delco Durastop Rotors - (JL9)	\$399.99
BRK-07	05-13	GM OE Replacement Rotors Drilled - (J55)	\$379.99
BRK-07AC	05-13	AC Delco Durastop Rotors Drilled - (J55)	\$499.99
BRK-08AC	05-13	AC Delco Durastop Rotors Drilled - (J56)	\$499.99
BRK-09	14+	AC Delco Rotors - (JL9)	\$549.99
BRK-10	14+	AC Delco Rotors - (J55)	\$549.99
BRK-11	14+	AC Delco Rotors - (J56)	\$2199.99

NOTES:

JL-9 - 12.8" Rotors - Base Cars
J55 - 13.4" Rotors - Z51 Suspension
J56 - 14" Rotors - Grand Sport & Z06

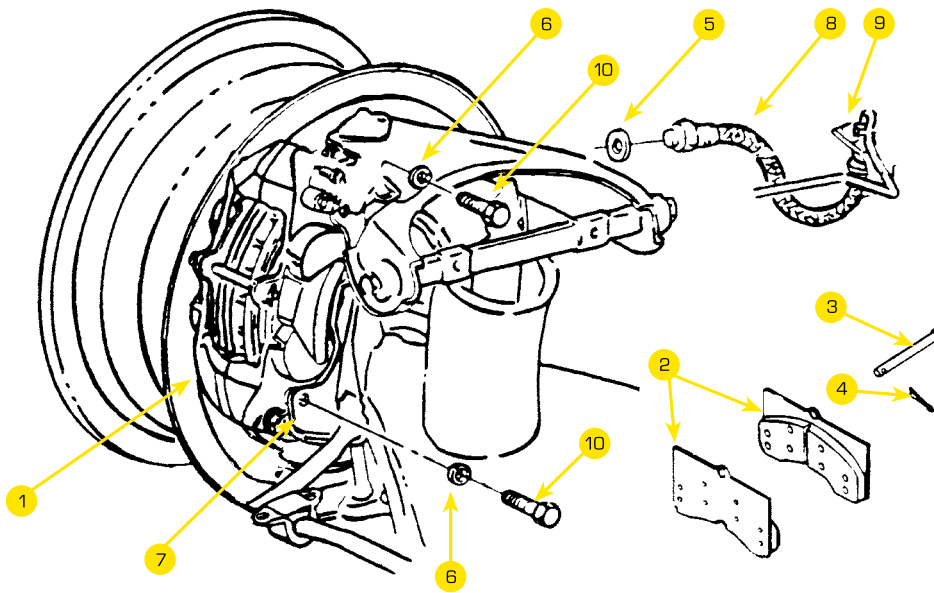


BRK-05S

only front two shown

BRAKES

63-82 front



FB-02
O-ring
caliper



RB-04-SM



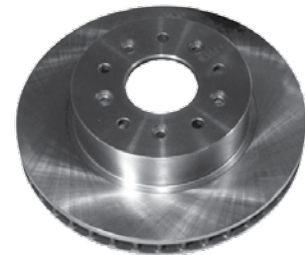
FB-09G



FB-11K



FB-16



FB-16SR



RB-32



1963-82 Front Brakes

Prt No.	Illus No.	No. Car	Year	Description	Price
FB-01	1	1	65-82	Left Front Caliper – Reman – O-Ring SS Sleeved	\$122.99
FB-01N	1	1	65-82	Left Front Caliper – New – O-Ring	\$209.99
FB-02	1	1	65-82	Right Front Caliper – Reman – O-Ring SS Sleeved	\$122.99
FB-02N	1	1	65-82	Right Front Caliper – New – O-Ring	\$209.99
FB-03	2	8	65-82	Front Brake Hose	\$13.99
FB-04	2	8	65-82	Front Brake Hose Brass Gasket	\$0.99
RB-04-SM	3	4	65-82	Front/Rear Semi-Metallic Brake Pads	\$29.99
RB-06	3	4	65-82	Front Rear Caliper Pin & Cotter Pin (ea)	\$1.99
RB-07	3	4	65-82	Front Rear Caliper Pin & Cotter Pin (car set)	\$6.99
FB-08C	-	1	65-82	Right Front Backing Plate – Correct	\$47.99
FB-08G	-	1	75-82	Right Front Backing Plate – Gold	\$30.99
FB-08S	-	1	65-74	Right Front Backing Plate – Silver	\$30.99
FB-09C	-	1	65-82	Left Front Backing Plate – Correct	\$47.99
FB-09G	-	1	75-82	Left Front Backing Plate – Gold	\$30.99
FB-09S	-	1	65-74	Left Front Backing Plate – Silver	\$30.99
FB-11K	-	1	65-82	Felt Gasket (pair)	\$7.99
FB-12E	-	2	65-68	Left Front Caliper Mounting Bracket	\$49.99
FB-12L	-	2	69-82	Left Front Caliper Mounting Bracket	\$29.99
FB-13E	-	2	65-68	Right Front Caliper Mounting Bracket	\$49.99
FB-13L	-	2	69-82	Right Front Caliper Mounting Bracket	\$29.99
FB-16	-	2	65-82	OE Replacement Front Rotor	\$49.99
FB-16SL	-	1	65-82	Left Front Slotted & Dimpled Rotor	\$119.99
FB-16SR	-	1	65-82	Right Front Slotted & Dimpled Rotor	\$119.99
RB-13	-	2	65-82	SS Flex Lines (car set)	\$84.99
RB-31K	-	2	65-82	Caliper Mounting Bolt Kit (9 pieces)	\$10.99
RB-32	-	2	65-82	Speed Bleeder (2 pack)	\$17.99



BRAKES

front continued

FB-125N



1965-82 Front Brakes

Prt No.	Ilus No.	No. Car	Year	Description	Price
RB-14	9	2	63-82	Horse Shoe Clip	\$0.99
RB-31	10	4	65-82	Caliper Bolt w/Lock Washer	\$1.99
FB-125N	—	1	67-76	Master Cylinder – Power	\$109.99
FB-125NP	—	1	67-76	Master Cylinder – Non-Power	\$109.99
FB-126	—	1	77-82	Master Cylinder – Power	\$109.99



BKW-260-8556-P

1965-82 Wilwood

Prt No.	Ilus No.	No. Car	Year	Description	Price
BKW-260-8555	—	1	65-82	Aluminum Master Cylinder 1" Bore – Raw	\$199.99
BKW-260-8555-BK	—	1	65-82	Aluminum Master Cylinder 1" Bore – Black	\$249.99
BKW-260-8555-P	—	1	65-82	Aluminum Master Cylinder 1" Bore – Polished	\$249.99
BKW-260-8556	—	1	65-82	Aluminum Master Cylinder 1.125" Bore – Raw	\$199.99
BKW-260-8556-BK	—	1	65-82	Aluminum Master Cylinder 1.125" Bore – Black	\$249.99
BKW-260-8556-P	—	1	65-82	Aluminum Master Cylinder 1.125" Bore – Polished	\$249.99

VS-22501



1984-96 Front Brakes

Prt No.	Ilus No.	No. Car	Year	Description	Price
BRF-8487	—	2	84-87	Front Rotor	\$59.99
BRF-8894-12	—	2	88-94	12" Front Rotor	\$49.99
BRF-8896-13-L	—	1	88-96	13" LH Front Rotor	\$79.99
BRF-8896-13-R	—	1	88-96	13" RH Front Rotor	\$79.99
FB-245	—	1	84-87	Left Front Caliper – Reman	\$59.99
FB-246	—	1	84-87	Right Front Caliper – Reman	\$59.99
FB-249	—	1	88-96	LF Brake Caliper - Big Brake – Reman	\$59.99
FB-250	—	1	88-96	RF Brake Caliper - Big Brake – Reman	\$59.99
FB-251	—	1	88-96	LF Brake Caliper - Reman	\$59.99
FB-252	—	1	88-96	RF Brake Caliper - Reman	\$59.99
FB-265	—	2	84-87	Front Brake Hose	\$29.99
FB-266L	—	1	88-92	Left Front Rubber Brake Hose	\$21.99
FB-266R	—	1	88-92	Right Front Rubber Brake Hose	\$21.99
FB-267	—	2	93	Front Brake Hose	\$19.99
FB-268L	—	1	94-96	Left Front Rubber Brake Hose	\$39.99
FB-268R	—	1	94-96	Right Front Rubber Brake Hose	\$39.99
FB-269	—	2	84-96	Copper Washer	\$1.99
VS-22500	—	1	85-87	C4 to C5 Front Brake Kit	\$1119.99
VS-22501	—	1	88-96	C4 to C5 Front Brake Kit	\$1119.99
FB-304K	—	1	85-87	Front Caliper Bracket for C6Z06 Calipers	\$184.99
FB-305K	—	1	88-96	Front Caliper Adapter Bracket Kit for C6 Z06 Calipers	\$199.99
FB-306K	—	1	88-96	Front Caliper Adapter Bracket Kit for C5 Calipers	\$189.99

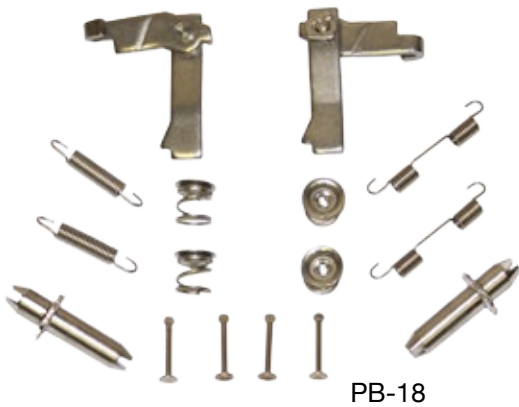
Highlight denotes parts shown on page

FB-306K

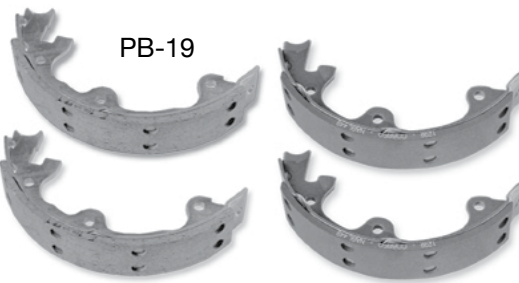


BRAKES

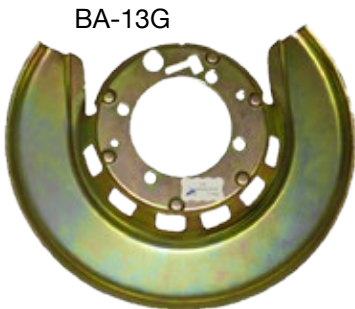
65-82 parking



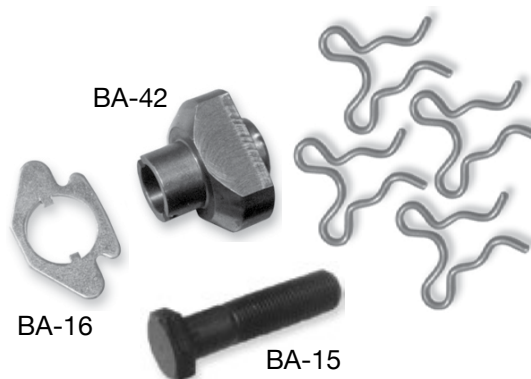
PB-18



PB-19



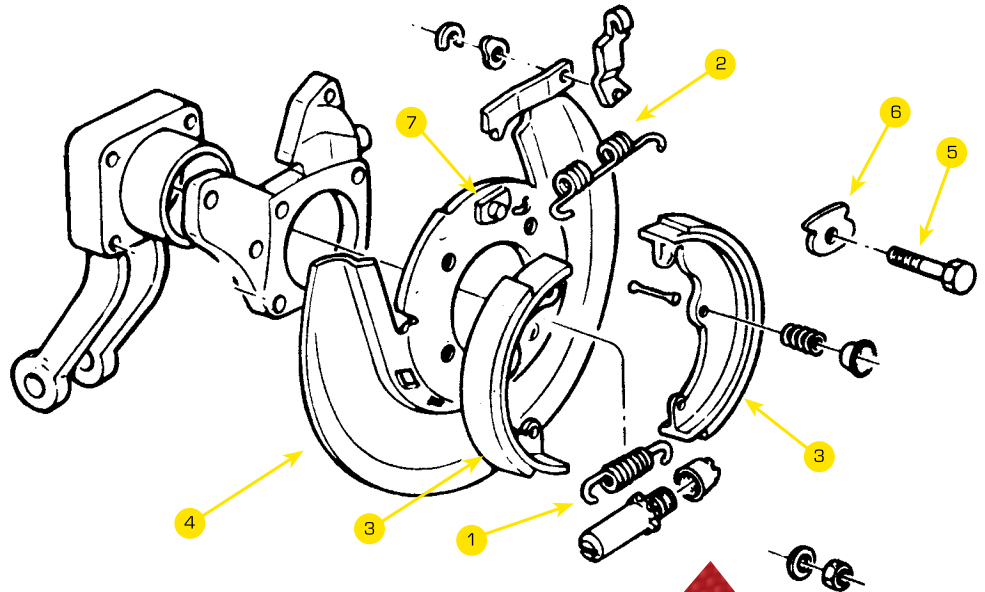
BA-13G



BA-42

BA-16

BA-15



1965-82 Parking Brakes

Prt No.	Ilus No.	No. Car	Year	Description	Price
BA-13C	4	1	65-82	Left Rear Backing Plate – Correct	\$47.99
BA-13G	4	1	75-82	Left Rear Backing Plate – Gold	\$30.99
BA-13S	4	1	65-74	Left Rear Backing Plate – Silver	\$30.99
BA-14C	4	1	65-82	Right Rear Backing Plate – Correct	\$47.99
BA-14G	4	1	75-82	Right Rear Backing Plate – Gold	\$30.99
BA-14S	4	1	65-74	Right Rear Backing Plate – Silver	\$30.99
BA-15	5	2	65-82	Parking Brake Anchor Bolt	\$1.99
BA-16	6	2	65-82	Parking Brake Anchor Guide Plate	\$3.99
BA-42	7	2	65-82	Parking Brake Anchor	\$14.99
PB-18	–	1	65-82	SS Parking Brake Hardware Kit	\$59.99
PB-19	3	4	65-82	Parking Brake Shoes – Set of 4	\$45.99

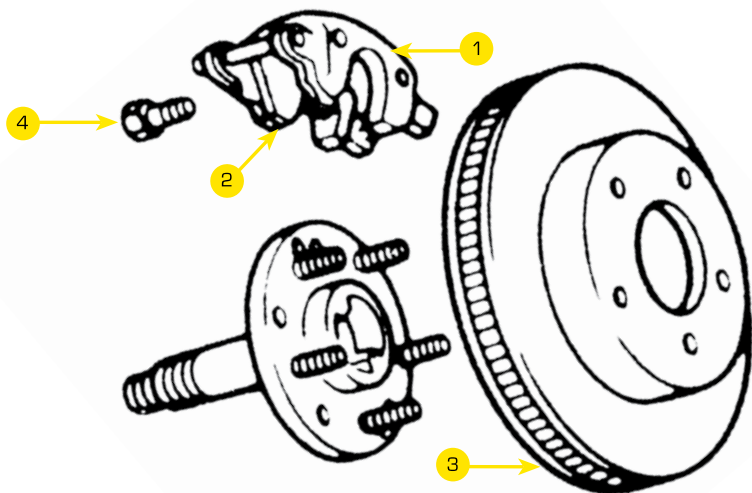
1963-82 Parking Brake Cables

Prt No.	Ilus No.	No. Car	Year	Description	Price
PB-24	–	1	67-82	S.S Front Parking Brake Cable w/Pulley, Bolt & Spacer	\$49.99
PB-26	–	1	64-65	Right Rear Parking Brake Cable	\$49.99
PB-26E	–	1	63	Right Rear Parking Brake Cable	\$59.99
PB-27	–	1	64-65	Left Rear Parking Brake Cable	\$49.99
PB-27E	–	1	63	Left Rear Parking Brake Cable	\$49.99
PB-29	–	1	65-82	Rear Parking Brake Cable – Correct	\$54.99
PB-30	–	1	65-82	Rear SS Parking Brake Cable	\$46.99
PB-31	–	2	65-82	Mickey Mouse Clip	\$0.99
PB-32	–	2	65-82	SS Mickey Mouse Clips (4 pcs)	\$2.99
PB-34	–	1	67-82	Front Pulley Cable	\$17.99
PB-36	–	–	65-82	Parking Brake Install Tool	\$15.99
TA-09	–	–	65-82	Parking Brake Cable Guide	\$1.99



REAR BRAKES

65-82



RB-02



RB-16



1965-82 Rear Brakes

Prt No.	Ilus No.	No. Car	Year	Description	Price
RB-01	1	1	65-82	Left Front Caliper – Reman – O-Ring SS Sleeved	\$122.99
RB-01N	1	1	65-82	Left Front Caliper – New – O-Ring	\$149.99
RB-02	1	1	65-82	Right Front Caliper – Reman – O-Ring SS Sleeved	\$122.99
RB-02N	1	1	65-82	Right Front Caliper – New – O-Ring	\$149.99
RB-04-SM	2	8	65-82	Front/Rear Semi-Metallic Brake Pads	\$29.99
RB-06	–	4	65-82	Front/Rear Caliper Pin & Cotter Pin	\$1.99
RB-07	–	4	65-82	Front/Rear Caliper Pin & Cotter Pin (Car Set)	\$6.99
RB-10	–	1	65-82	Left Rear Caliper Hard Line	\$20.99
RB-11	–	1	65-82	Right Rear Caliper Hard Line	\$20.99
RB-12	–	2	65-82	Rear Rubber Flex Line	\$17.99
RB-13	–	4	65-82	SS Flex Lines – Car Set	\$92.99
RB-13-OE	–	1	65-82	Single Rear SS Flex Line Kit for Stock Calipers	\$119.99
RB-13-WWE	–	1	65-82	Single Rear SS Flex Line Kit for Wilwood Calipers	\$106.99
RB-14	–	2	63-82	Brake Line Horse Shoe Clip	\$0.99
RB-16	3	2	65-82	Rear Rotor	\$49.99
RB-16SL	3	1	65-82	LH Rear Slotted & Dimpled Rotor	\$119.99
RB-16SR	3	1	65-82	RH Rear Slotted & Dimpled Rotor	\$119.99
RB-31K	4	4	65-82	Caliper Mounting Bolt Kit	\$10.99
RB-32	–	–	65-82	Speed Bleeders - 2 pack (SS)	\$17.99
RB-34	–	–	–	Dot 3 Brake Fluid – 1 Qt. Bottle	\$6.99
RB-37	–	–	–	Wilwood EXP 600 Plus Racing Brake Fluid 16.9 oz Bottle	\$19.99
RB-38	–	–	–	Wilwood DOT 4 570 High Temp Brake Fluid 12 oz Bottle	\$11.99
RB-39	–	–	–	Wilwood DOT 5 Silicone Brake Fluid 12 oz Bottle	\$13.99



RB-04-SM



RB-37



RB-39



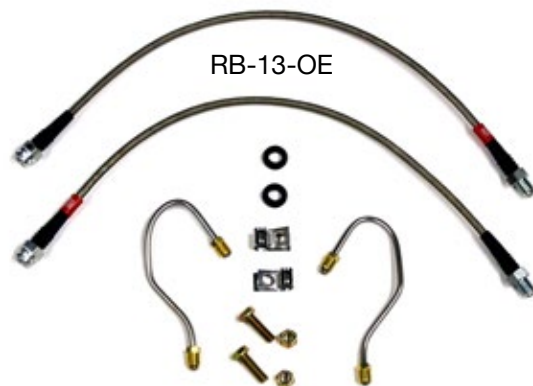
RB-32



RB-31K



RB-12

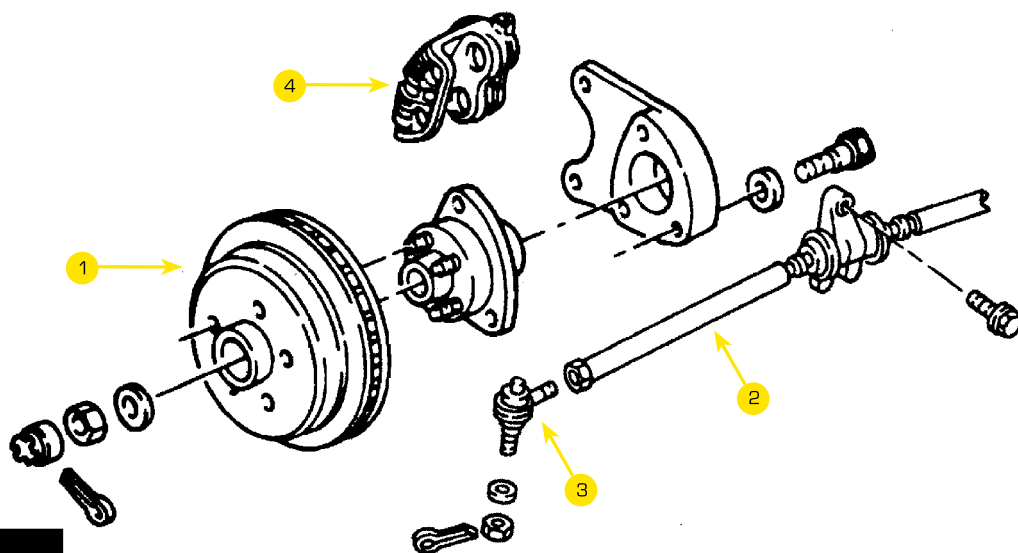


RB-13-OE

RB-228



65-82 parking



1984-96 Rear Brakes

Prt No.	Ilus No.	No. Car	Year	Description	Price
BRR-8487	-	2	84-87	Rear Rotor	\$59.99
BRR-8487-DS	-	1	84-87	Rear Drilled & Slotted Rotors (pair)	\$204.99
BRR-8896	-	2	88-96	Rear Rotor	\$69.99
BRR-8896-DS	-	1	88-96	Rear Drilled & Slotted Rotors (pair)	\$174.99
RB-208	3	2	84-91	Rear Outer Tie Rod End	\$49.99
RB-209	3	2	92-96	Rear Outer Tie Rod Ends	\$32.99
RB-36	-	2	84-96	Speed Bleeders (2 pack)	\$17.99
RB-216	-	2	84-87	Rear Rubber Brake Hose	\$29.99
RB-217	-	1	88-92	Left Rear Rubber Brake Hose	\$26.99
RB-218	-	1	88-92	Right Rear Rubber Brake Hose	\$26.99
RB-219	-	2	93-96	Rear Rubber Brake Hose	\$35.99
RB-224	-	4	84-87	Semi-Metallic Brake Pads	\$39.99
RB-225	-	4	88-96	Semi-Metallic Brake Pads	\$39.99
RB-226	-	1	84-87	Left Rear Caliper - Reman	\$59.99
RB-227	-	1	84-87	Right Rear Caliper - Reman	\$59.99
RB-228	-	1	88-96	Left Rear Caliper - Reman	\$89.99
RB-229	-	1	88-96	Right Rear Caliper - Reman	\$89.99



RB-225



BRR-8896

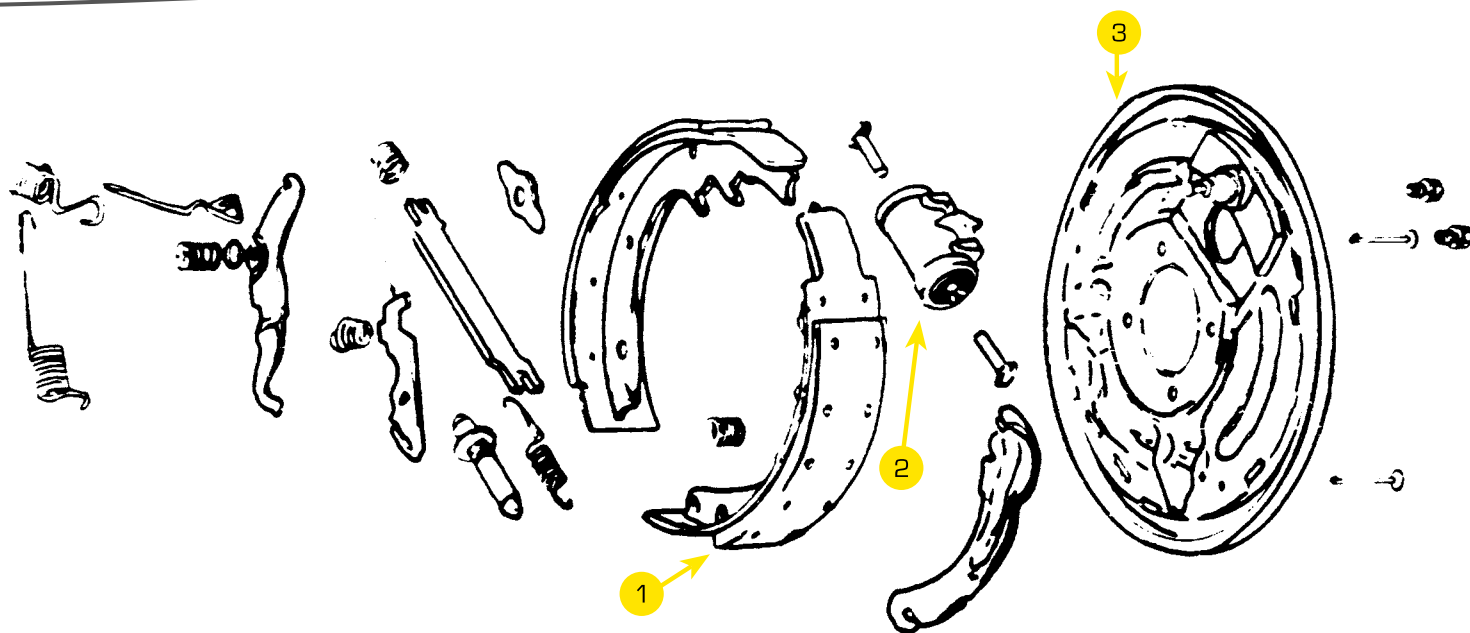


BRR-8896-DS



BRAKES

drum



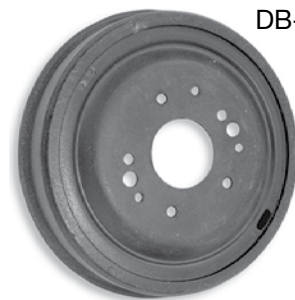
1963-64 Drum Brakes

Prt No.	Ilus No.	No. Car	Year	Description	Price
DB-01	—	2	63-64	Front Drum	\$74.99
DB-02	—	2	63-64	Rear Drum	\$69.99
DB-03	1	1	63-64	Front Shoes	\$59.99
DB-04	1	1	63-64	Shoes - Rear	\$39.99
DB-05L	2	1	63-64	Left Front Wheel Cylinder	\$39.99
DB-05R	2	1	63-64	Right Front Wheel Cylinder	\$39.99
DB-06L	2	1	63-64	Left Rear Wheel Cylinder	\$19.99
DB-06R	2	1	63-64	Right Rear Wheel Cylinder	\$19.99
DB-07	3	1	63-64	Left Front Backing Plate - USED	\$74.99
DB-08	3	1	63-64	Right Front Backing Plate - USED	\$74.99
DB-09	3	1	63-64	Left Rear Backing Plate - USED	\$74.99
DB-10	3	1	63-64	Right Rear Backing Plate - USED	\$74.99
DB-15	—	1	63-64	Drum Brake Hardware Kit (car set)	\$149.99
DB-29	—	1	63-64	Left Rear Hard Line - Steel	\$12.99
DB-30	—	1	63-64	Left Rear Hard Line - SS	\$15.99
DB-31	—	1	63-64	Right Rear Hard Line - Steel	\$12.99
DB-32	—	1	63-64	Right Rear Hard Line - SS	\$15.99
FB-03	—	2	63-64	Front Flex Line - Rubber	\$12.99
RB-12	—	1	63-64	Rear Flex Line - Rubber	\$17.99
BLK-01	—	1	63-64	Front & Rear Flex Lines - Rubber	\$41.99
RB-13	—	1	63-64	SS Flex Lines	\$84.99



DB-03

DB-04



DB-01



DB-06



DB-05



FB-03



63-82 TORQUE SPECIFICATIONS

Brakes:	ft/lbs	size
Caliper Mounting Bolts - Front.....	70.....	7/16
Caliper Mounting Bolts - Rear.....	70.....	7/16
Rear Suspension:		
U-Joint (inner) U-Bolts.....	15.....	9/16
U-Joint (inner) Caps	30.....	9/16
U-Joint (outer) Flange Bolts	70.....	5/8
	(use locks)	
Strut Rod (Inner) Camber Bolt.....	70*	3/4
Shock Absorber (upper) Bolt.....	.60	5/8
	& 11/16	
Shock Absorber (lower) Nut	40.....	3/4
Bearing Housing to T-Arm	30.....	9/16
Spindle Nut.....	100+.....	11/16

Warning: If the assembly was not properly set-up, tightening the **spindle nut** will load the bearings and cause imminent bearing failure.

Front Suspension:	ft/lbs	size
Upper A-Frame Bushing Bolt.....	35*	9/16
Upper A-Frame Align, Shim Nut.....	50.....	11/16
Lower A-Frame Fr. Mtg. Bolts	70*	5/8
Lower A-Frame Rear Mounting	100.....	7/8
	& 13/16	
Steering Arm to Spindle	70.....	3/4
	(63-68, 11/16)	

Carrier:		
Pinion Bushing Bolt.....	65.....	5/8
	& 11/16	
Front Brackets to Housing	50+.....	5/8
	& 11/16	
Strut Rod Bracket Bolts	35.....	9/16
Rear Cover Bolts	50.....	5/8

+ plus additional torque when necessary to align cotter pin hole * tighten bolts only when arms are at riding height

The torque specs provided are a Dry Torque Spec. Wet Torque Specs are 20-25% less.

Please refer to a Torque Spec Bolt Chart for accurate Wet Torque Specs.

1963-82 ALIGNMENT SPECIFICATIONS

1963-82

Street Specs

FRONT

Rake	.500" Positive
Toe	.063° Total Toe In
Camber	0°
Caster OE Upper Arms	Max° Positive
Caster w/VS Tubular Uppers	6-8° Positive

REAR

Toe	.265° Total Toe In
Camber	.25° Negative

Track Specs

FRONT

Rake	.200" Positive
Toe	0 - .132° Total Toe Out
Camber	.75 - 2° Negative
Caster w OE Upper Arms	Max Possible
Caster w/VS Tubular Uppers	6.3-7.5° Positive

REAR

Toe	.265°-.657° Total Toe In
Camber	.5 - 1° Negative

Advanced Street Specs

FRONT

Rake	.500" Positive
Toe	0° - Total
Camber	.25 - .5° Negative
Caster w/OE Upper Arms	Max° Possible
Caster w/VS Tubular Uppers	6-8° Positive

REAR

Toe	.265° Total Toe In
Camber	.25-.50° Negative

**All measurements
based on a stock tire,
overall height of 27"**

*All toe amounts are total toe measurements. *You may experience accelerated tire wear with these alignment settings.*

1984-96 ALIGNMENT SPECIFICATIONS

Street Specs

FRONT

Rake .500" Positive
Toe .068° Total Toe In
Camber 0°
Caster 6.25-8° Positive

REAR

Toe .275° Total Toe In
Camber .25 Degrees Negative

Advanced Street Specs

FRONT

Rake .250° Positive
Toe 0 - Total
Camber .25-.5° Negative
Caster 6.25-8° Positive

REAR

Toe .275° Total Toe In
Camber .25 - .5° Negative

Track Specs

FRONT

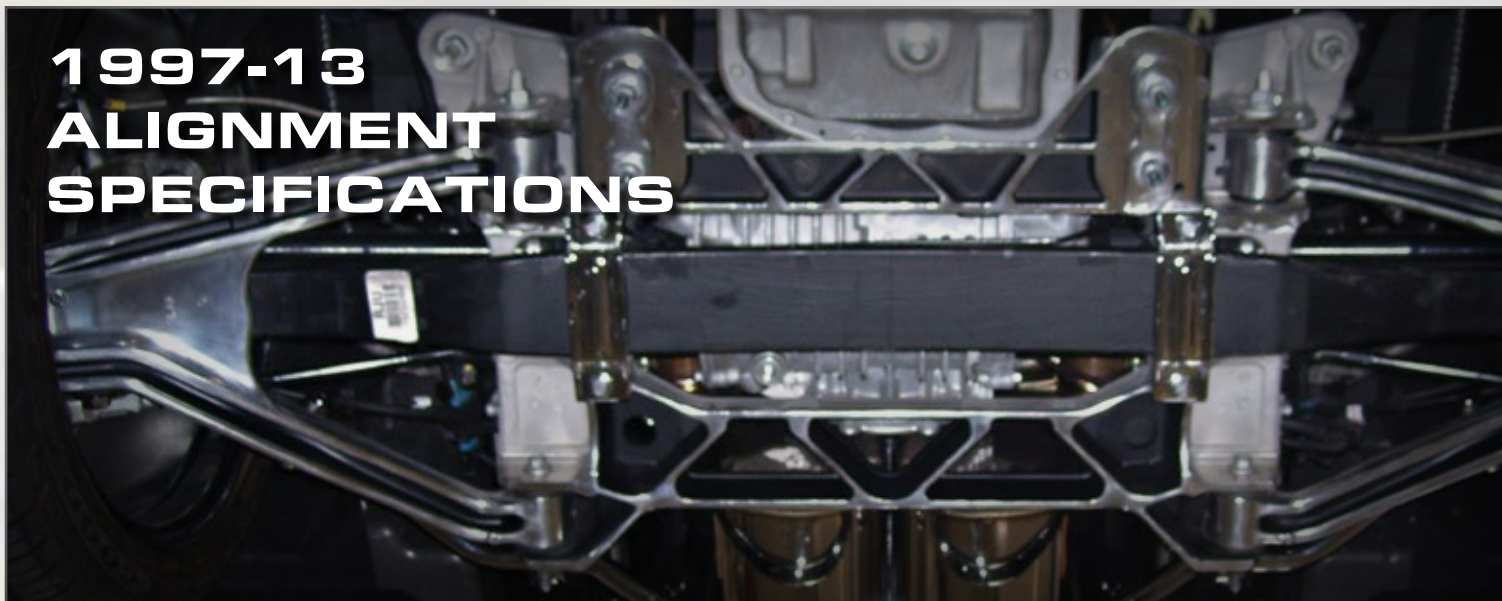
Rake .180" Positive
Toe 0 - .137° Total Toe Out
Camber .5 - 2.0° Negative
Caster 6.3-7.5° Positive

REAR

Toe .275 to .688° Total Toe In
Camber .500 - 1.00° Negative

**All measurements
based on a stock tire,
overall height of 26"**

1997-13 ALIGNMENT SPECIFICATIONS



Street Specs

FRONT

Rake 20mm Positive
Toe .070° Total Toe In
Camber 0-.250° Negative
Caster 7.00-8.5° Positive

REAR

Toe .270° Total Toe In
Camber .25° Negative

Track Specs

FRONT

Rake 0 to 10mm Positive
Toe 0 - .139° Total Toe Out
Camber 1.5 - 2.5° Negative
Caster 6.3-7.5° Positive

REAR

Toe .270 to .675° Total Toe In
Camber .500 - 1.00° Negative

Advanced Street Specs

FRONT

Rake 10mm Positive
Toe 0 - Total
Camber .50-1.25° Negative
Caster 6.25-8° Positive

REAR

Toe .270° Total Toe In
Camber .25 - .5° Negative

Drag Race

FRONT

Rake 10mm Negative
Toe 0 Total
Camber 0 to .2° Positive
Caster 7.5-8.5° Positive

REAR

Toe .021-.064° Total Toe In
Camber 0 to .10° Negative

**All measurements based on stock tire sizes:
Front: 25.7" | Rear: 26.5"**

These specifications are starting point for base line packages. Rubber bushings can effect final numbers. For pure track time cars please call for specific settings.

2014+ ALIGNMENT SPECIFICATIONS



Street Specs

FRONT

Rake 10mm Positive
Toe .10° Total Toe In
Camber .5° Negative
Caster 6.80-7.40° Positive

REAR

Toe .405° Total Toe In
Camber .5° Negative

Track Specs

FRONT

Rake 3mm Positive
Toe 0° Total Toe Out
Camber 2.5° Negative
Caster 6.8-7.2° Positive

REAR

Toe .270 to .405° Total Toe In
Camber 1.2-1.5° Negative

Spirited Street Specs

FRONT

Rake 10mm Positive
Toe 0-.10° Total Toe In
Camber .9° Negative
Caster 6.80-7.40° Positive

REAR

Toe .270 to .405° Total Toe In
Camber 1.1° Negative

**All measurements based on stock tire sizes:
Front: 25.7" | Rear: 26.5"**

These specifications are starting point for base line packages. Rubber bushings can effect final numbers. For pure track time cars please call for specific settings.



TOOLS

63-82

Ball Joint/Tie Rod Tools



Separate ball joints or tie rods quickly, easily and without thread damage with these heavy duty tools. Made of drop forged steel with zinc plating for life-long use. Tie Rod has a 21/32" jaw.

541 Ball Joint Tool\$9.99

543 Tie Rod Tool\$9.99

Suspension DVD

This video will show you how to remove and install the front and rear suspension on a 63-82 Corvette.

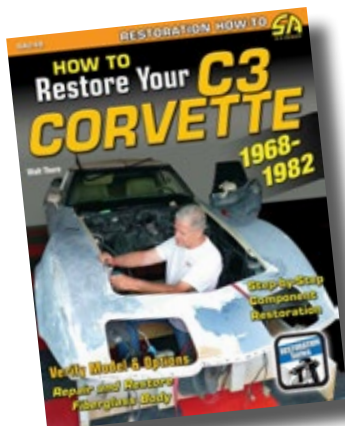
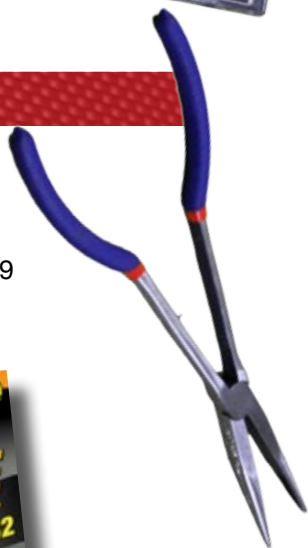
DVD-01.....\$24.99



Needle Nose Pliers

Ideal for working in hard to reach places. A lifesaver for t-arm bolt installation.

NN-01.....\$8.99



Order your complete how-to guide to restore your C3 Corvette.
Co-written by Van Steel's own Art Dorsett.

C3 Restoration Book.....\$29.99

Shock Mount Remover

remover tool



SR-21K/SR-22K
Shock Mount
(see pg27)

Shock Mounts often rust solid inside the support and strut rod. Removal often ruins the shock mount. Our tool, complete with illustrated instructions and service tips, prevents damage to the shock mount and makes removal faster and easier.

SM-01..... \$16.99

Parking Brake Installation Tool



Our tool comes with completely illustrated instructions to make parking brake work easier and less frustrating.

PB-36 \$15.99

Tap & Die Suspension Set



Six hard-to-find re-threader taps and dies most needed in Corvette suspension work. For use on front and rear suspensions.

TDS-01 \$21.99

All 3 Tools: SM-01, PB-36, TSD-01

TOOL-3 \$32.99

Car Dollies

Make it easier to move your project around your shop. Keep those custom wheels clear of the work zone and still be able to move your Corvette.

Prt No.	Description	Price
VSA-M998071	Dolly Dock	\$39.99
VSA-M998074	5 Hole Roll Around Autodolly(pr)	\$117.99
VSA-M998101	12" x 16" Autodolly(pr)	\$89.99





Preferred Dealer List Coming Soon

We are currently reaching out to our Dealers to compile an extensive list for our customers to reach out to for help with their Corvette's suspension. We are setting prerequisites so you know you'll be dealing with a reputable shop. Dealers won't be able to buy their way in, we'll be choosing them by a few standards we expect will be most beneficial to our customers.

Our list for 2020 will be posted to our website, facebook and instagram. We'll also send out an email announcing it's launch.

Visit vansteel.com/contactus to be placed on our email list, or email eric@vansteel.com.



WARRANTY & EXCHANGE

800.418.5397

Suspension

T-Arm Assemblies.....	Lifetime
Bearing Assemblies.....	Lifetime
Steering Boxes.....	Five Year
A-Arm Rebuild.....	Lifetime
Differential.....	One Year
Half Shafts.....	Five Year
Shock Absorbers (Except Racing).....	Lifetime
QA1 Products.....	One Year
Steel Coil Springs.....	Five Year
Steel Leaf Springs.....	Five Year
Composite Springs.....	Lifetime
Spring Hardware.....	Lifetime

Chassis Parts

Anti-Sway Bars & Hardware.....	Lifetime
Ball Joints, Tie Rod Ends.....	Lifetime
Bushings (Rubber or Poly).....	Lifetime
Centerlink.....	Lifetime
HD Control Arms.....	Lifetime
Idler Arm.....	One Year
Strut Rods (Except Racing).....	Lifetime
HD Diff Cover.....	One Year

Brakes

Brake Hoses (Rubber or SS).....	Five Year
O-Ring & SS Calipers.....	Lifetime
New Master Cylinders.....	Lifetime
New Power Boosters.....	Lifetime
SS Brake Lines.....	Five Year
Steel Brake Lines.....	One Year
SS Parking Brake Kits & Cables.....	Lifetime

Power Steering

Rebuilt Control Valves.....	One Year
Rebuilt Steering Cylinder.....	One Year
Power Steering Component Kit.....	One Year
Power Steering Conversion Kit.....	One Year
All other Power Steering Parts.....	One Year

Van Steel Inc.,

warranties the following item(s) to be free from defects in material and workmanship to the original purchaser for the terms listed below. These warranties DO NOT cover: oversea shipments, any type of racing application, misuse or abuse, repairs, normal wear, shipping or storage costs, property damage, personal injury, diagnostic charges, labor, towing charges or any other associated expenses what so ever. At the discretion of Van Steel Inc, these warranties are for the repair or replacement of the defective part ONLY. It's the customers responsibility to provide proof of purchase (sales receipt) for any warranty transactions. Van Steel Inc. is not responsible for damage caused by improper installation.



NOTE:

- ***Rush orders are subject to a \$10.00 Expedite Fee.***
- ***Large Heavy Suspension or Brake Packages may include an additional shipping charge of \$2.50 per order.***
- ***Freight shipping also available.***

Exchange Units

Exchange units are available so that you, or your mechanic, can bolt-on and drive away. Receive the benefit and added measure of safety with a Van Steel rebuilt unit without sacrificing down time. Spindle flanges are not included. A Core Deposit is required. The core is refunded when the exchange parts are disassembled, thoroughly inspected and determined to be usable in future builds. Please allow 2-3 weeks for the parts to be inspected upon return.

Rear Wheel Bearing Core

Core-BA..... \$300.00

T-Arm (do not need rotor)

Matched Rotor & SS Parking Brake Hardware
Core-TA \$400.00

The prices for non-usable parts are listed below.

TA & BA Core Deductions

Spindle.....\$110.00
Bearing Support (L/R).....\$150.00
Caliper Mounting Bracket (L/R)\$80.00
T-Arm (L/R).....\$130.00

Core accounts will remain open for thirty (30) days from the day your order ships, unless other specific arrangements are made. Full refunds WILL NOT be given after thirty (30) days, the core refund will get reduced to half of the original core charge. If we deem there are bad parts, Defective part(s) are not returned unless requested by the customer.

CORE POLICIES

800-418-5397

Core Prices

Bearing Assembly (per side).....\$300.00
T-Arm Assembly Complete
(per side)\$400.00
Half Shaft (each)\$80.00
Strut Rod (each)\$55.00
Steering Box.....\$100.00
Upper A-Arm (each).....\$50.00
Lower A-Arm (each).....\$150.00
Brake Calipers (per wheel).....\$50.00
Power Steering Valve\$100.00
Power Steering Ram\$60.00

Email us: vansteel@vansteel.com

Message us on facebook: [@vansteelcorvettes](https://www.facebook.com/vansteelcorvettes)



2020 Show Dates

See us at a show near you. Pick up or drop off parts to save on shipping. you can even pick up or drop off your rolling chassis, but you must schedule well in advance. You can also check out our Events Calender on our website's home page, vansteel.com

February 21-23
Carlisle AutoFest
Lakeland, FL
Order by January 24

March 14-15
Corvette/Chevy Expo
Galveston Island, TX
Order by February 17

April 24-26
Good-Guys
Raleigh, NC
Order by March 24

June 12-14
Good-Guys
Nashville, TN
Order by May 12

July 10-12
Good-Guys
Columbus, OH
Order by June 12

August 27-30
Corvettes at Carlisle
Carlisle, PA
Order by July 27

NEW FOR 2020
September 25-27
Good-Guys
Fort Worth, TX
Order by August 25



VAN STEEL

CORVETTE SUSPENSION SPECIALISTS

CORVETTE
SUSPENSION
BRAKES &
STEERING PARTS

12285 West Street
Clearwater, FL 33762
727.561.9199 • 800.418.5397
vansteel.com • vansteel@vansteel.com



facebook.com/vansteelcorvettes
instagram: @vansteelcorvettes

